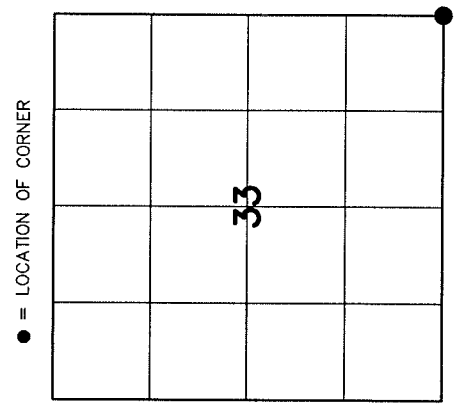


4311333 0000 2017

U.S. PUBLIC LAND SURVEY MONUMENT RECORD

HISTORY OF ORIGINAL CORNER ESTABLISHMENT AND SUBSEQUENT RESTORATION AND DESCRIPTION OF ANY RECORD, MONUMENT OCCUPATIONAL, TESTIMONIAL OR OTHER EVIDENCE CONSIDERED:

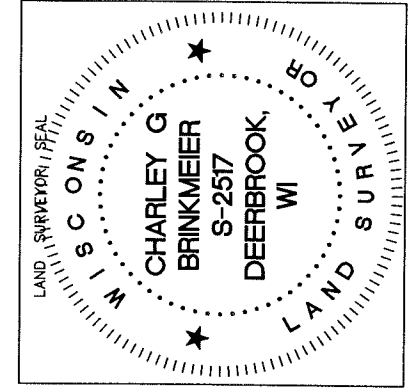
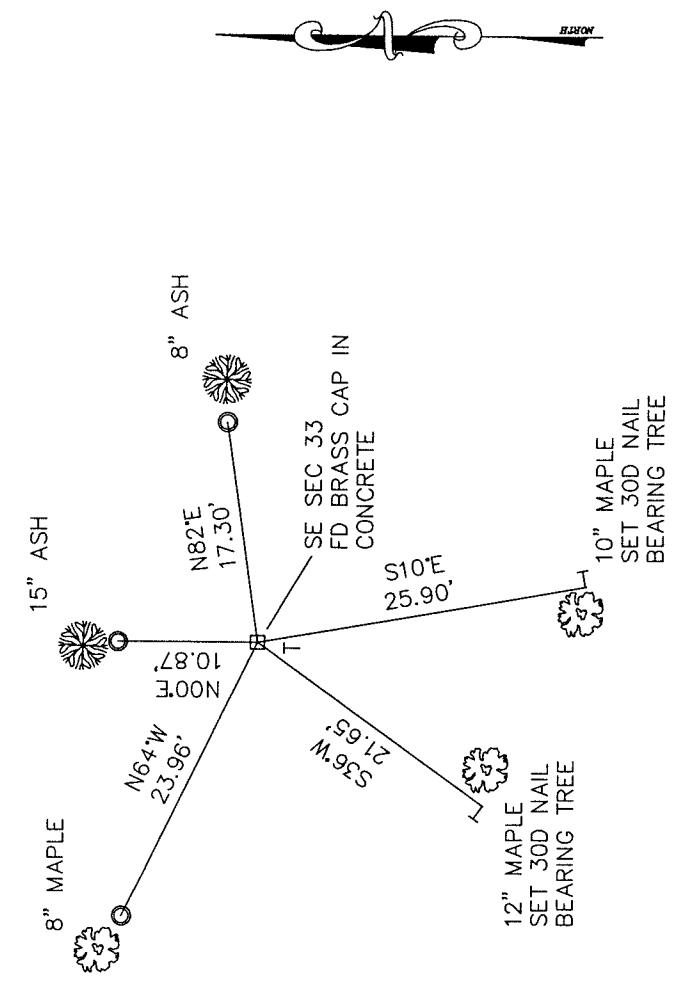
THE ORIGINAL CORNER WAS SET BY ALFRED MILLARD IN JUNE 1857. THE ORIGINAL BEARING TREES WERE:
 HEMLOCK 12" N47°E 58 LINKS
 HEMLOCK 11" N42°E 7 LINKS
 MAPLE 11" N28°W 49 LINKS
 WALNUT 36" N70°W 57 LINKS
 1933-GLO SET A BRASS CAP IN CONCRETE
 1984-KELLY FOUND THE GLO MONUMENT AND SET TIES
 2017-I ALSO FOUND THE GLO MONUMENT AND SET TIES AS SHOWN SET A MAGNET ON THE SOUTH SIDE OF THE CONCRETE 3" BELOW THE SURFACE



SECTION 33
 TOWNSHIP 31 NORTH, RANGE 13 EAST
 TOWN OF EVERGREEN
 LANGUAGE COUNTY, WISCONSIN

- CORNER WAS: (CHECK ALL THAT APPLY)
- RESTORED THROUGH ACCEPTANCE OF AN OBLITERATED EVIDENCE LOCATION
 - RESTORED THROUGH ACCEPTANCE OF A FOUND PERPETUATED LOCATION
 - CONSIDERED A LOST CORNER AND REESTABLISHED THROUGH LOST CORNER PROPORTIONATE METHODS (INCLUDE A PLAN VIEW DRAWING SHOWING DISTANCES AND DIRECTIONS TO OTHER PUBLIC LAND SURVEY CORNERS USED FOR PROPORTIONING AND DETERMINING THE CORNER LOCATION)
 - RESTORED OR REESTABLISHED IN A LOCATION THAT DIFFERS FROM A PREVIOUS RESTORATION OR REESTABLISHMENT (INCLUDE A PLAN VIEW DRAWING AND INDICATE WHAT WAS SET AND/OR FOUND)
 - CHECK IF THERE IS ADDITIONAL INFORMATION ON BACK

DESCRIBE THE MONUMENT AND ACCESSORIES USED TO PERPETUATE THE LOCATION OF THE CORNER. (INCLUDE A PLAN VIEW DRAWING AND INDICATE WHAT WAS SET AND/OR FOUND) ALSO INCLUDE FOUR TIES TO THE SECTION CORNER AND DESCRIPTION OF THE TIES.



CHARLEY G. BRINKMEIER
(type or print name) CERTIFY THAT THE CORNER LOCATION SHOWN ON THIS RECORD WAS DETERMINED BY ME OR UNDER MY DIRECTION AND CONTROL AND THAT THIS U.S. PUBLIC LAND SURVEY MONUMENT RECORD IS CORRECT AND COMPLETE TO THE BEST OF MY KNOWLEDGE AND BELIEF.

Charley Brinkmeier
 SIGNATURE

11-13-17
 DATE

○ SET 3/4" x 30" RE-BAR AT TIE LOCATIONS
 T- 6 FOOT WHITE VINYL POST SET
 BEARING REFERENCED TO MAGNETIC
 COORDINATE DATUM NAD 83(2011)
 N 332137.06
 E 693574.77

213 31-13
 INDEX NO.