

CERTIFIED LAND CORNER RESTORATION

Index No. S-7

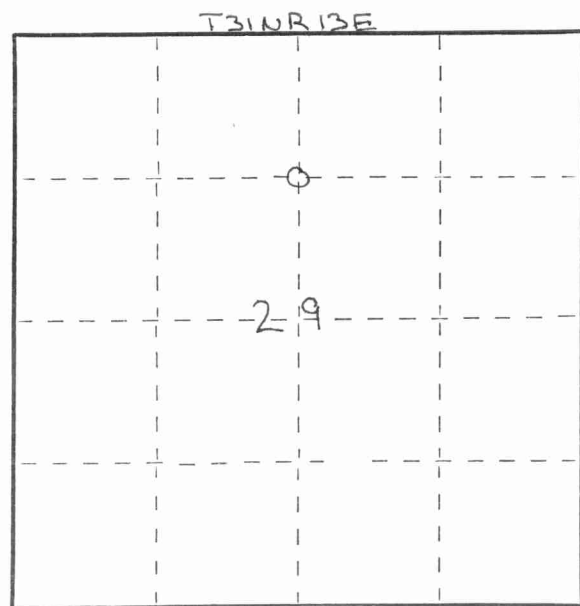
State of Wisconsin }
 County of LAUGHLIN } ss.

I WILLIAM F KELLY, do hereby certify that on the 24th day of MAY, 1978, I found evidence of the N 1/4 corner of SECTION 29 Township 31, North, Range 13E, Fourth Principal Meridian, as described hereon; and that from this evidence I established a new monument and accessories as described hereon to perpetuate the original location of this corner.

Resident witnesses:

.....

FORM 985 H. C. MILLER CO., MILWAUKEE



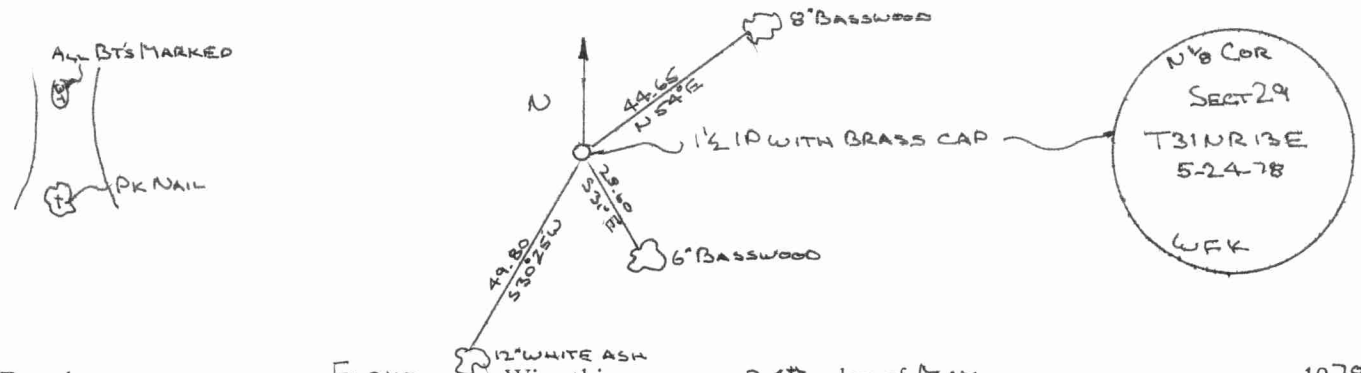
○ = Corner monument restored.

History of original corner establishment:

Description of corner evidence found:

SET 1 1/2 x 42 IP WITH BRASS CAP. CORNER ESTABLISHED MIDWAY BETWEEN THE EXISTING CENTER 1/4 CORNER AND THE NORTH 1/4 CORNER CORNERS OF SECT 29

Description of monument and accessories I established to perpetuate the original location of this corner.

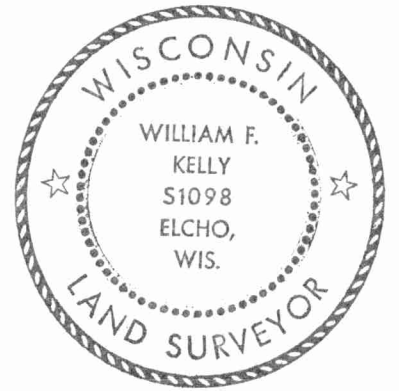


Dated at ELCHO, Wis., this 24th day of MAY, 1978

Signature William F. Kelly Title REGISTERED LAND SURVEYOR Registration No. S1098
 (County Surveyor, Registered Land Surveyor, or other duly authorized official)

Office of Register of Deeds, County of _____, I hereby certify that the within instrument was filed in this office for record on the _____ day of _____, 19____ at _____ o'clock _____ M.

.....
 (Register of Deeds)
 By..... Deputy



William F. Kelly

