

4311329 0000 2013

U.S. PUBLIC LAND SURVEY MONUMENT RECORD

HISTORY OF ORIGINAL CORNER ESTABLISHMENT AND SUBSEQUENT RESTORATION AND DESCRIPTION OF ANY RECORD, MONUMENT OCCUPATIONAL, TESTIMONIAL OR OTHER EVIDENCE CONSIDERED:

THE ORIGINAL CORNER WAS SET BY MARSH IN 1851 WITH THE ORIGINAL BEARING TREES OF:

10" MAPLE - N58°W 33 LINKS

9" MAPLE - N35°E 7 LINKS

8" HEMLOCK - N5°W 8 LINKS

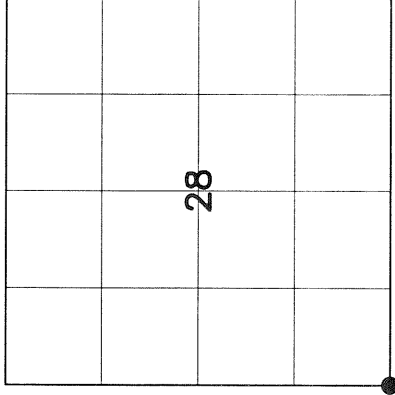
16" HEMLOCK - N17°W 35 LINKS

1984 - KELLY HAD SET THE 2" MONUMENT BY SOME PROPORTIONMENT

1999 - HIGGINBOTHAM FOUND A PK NAIL IN THE MIDDLE OF HAGEMAN RD AND USED IT AS THE SECTION CORNER - VOL 8 CSM PG. 165

2007 - WE FOUND THE PK NAIL WAS AT THE INTERSECTION OF THE FENCE LINE THAT RUNS ALONG THE SOUTH LINE OF THE SW 1/4 OF SECTION 28 AND THE CENTERLINE OF HAGEMAN RD. WE ACCEPTED IT AS THE LOCATION OF THE SW CORNER

● = LOCATION OF CORNER



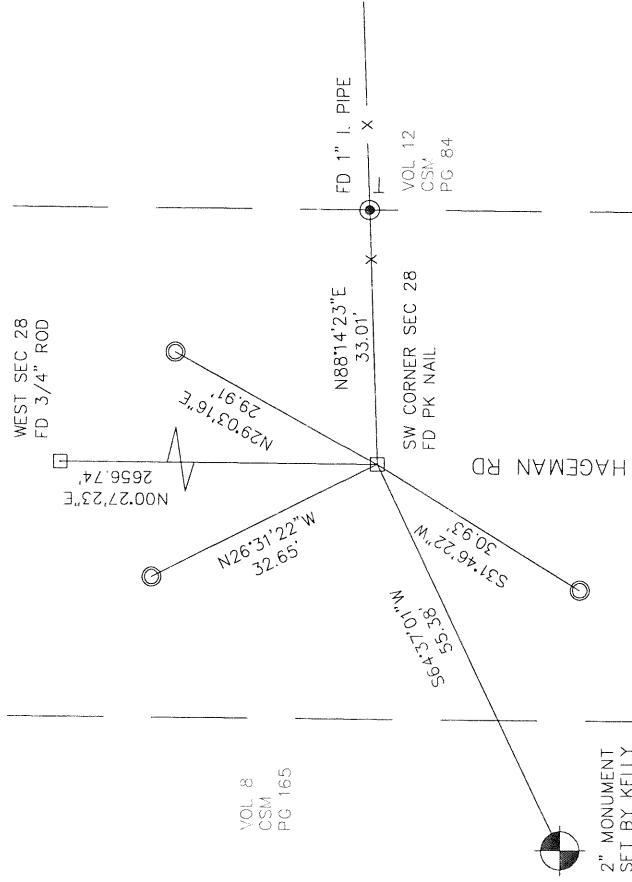
SECTION 28
TOWNSHIP 31 NORTH, RANGE 13 EAST

TOWN OF EVERGREEN
LANGLADE COUNTY, WISCONSIN

CORNER WAS: (CHECK ALL THAT APPLY)

- RESTORED THROUGH ACCEPTANCE OF AN OBLITERATED EVIDENCE LOCATION
- RESTORED THROUGH ACCEPTANCE OF A FOUND PERPETUATED LOCATION
- CONSIDERED A LOST CORNER AND REESTABLISHED THROUGH LOST CORNER PROPORTIONATE METHODS (INCLUDE A PLAN VIEW DRAWING SHOWING DISTANCES AND DIRECTIONS TO OTHER PUBLIC LAND SURVEY CORNERS USED FOR PROPORTIONING AND DETERMINING THE CORNER LOCATION)
- RESTORED OR REESTABLISHED IN A LOCATION THAT DIFFERS FROM A PREVIOUS RESTORATION OR REESTABLISHMENT (INCLUDE A PLAN VIEW DRAWING AND INDICATE WHAT WAS SET AND/OR FOUND)
- CHECK IF THERE IS ADDITIONAL INFORMATION ON BACK

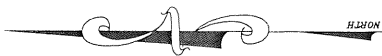
DESCRIBE THE MONUMENT AND ACCESSORIES USED TO PERPETUATE THE LOCATION OF THE CORNER (INCLUDE A PLAN VIEW DRAWING AND INDICATE WHAT WAS SET AND/OR FOUND) ALSO INCLUDE FOUR TIES TO THE SECTION CORNER AND DESCRIPTION OF THE TIES.



SET 3/4" X 24" IRON RE-BAR AT ALL TIE LOCATIONS

BEARINGS REFERENCED TO THE LANGLADE COUNTY COORDINATE SYSTEM

T - SET 6' WHITE T-POST

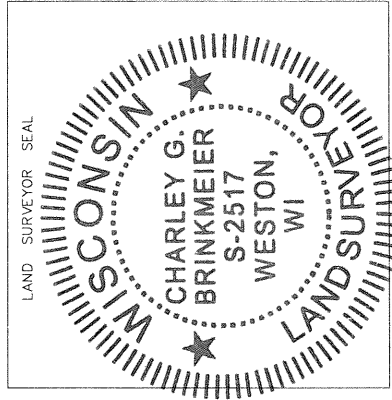


CHARLEY G. BRINKMEIER

(Type or print name) CERTIFY THAT THE CORNER LOCATION SHOWN ON THIS RECORD WAS DETERMINED BY ME OR UNDER MY DIRECTION AND CONTROL AND THAT THIS U.S. PUBLIC LAND SURVEY MONUMENT RECORD IS CORRECT AND COMPLETE TO THE BEST OF MY KNOWLEDGE AND BELIEF.

Charley G. Brinkmeier
SIGNATURE

3-20-13
DATE



INDEX NO. 19