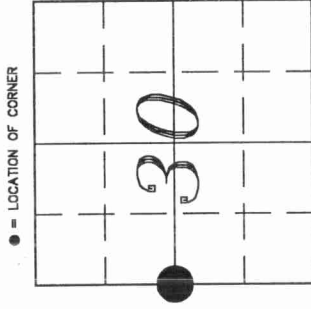


U.S. PUBLIC LAND SURVEY MONUMENT RECORD

3113252000

HISTORY OF ORIGINAL CORNER ESTABLISHMENT AND SUBSEQUENT RESTORATION AND DESCRIPTION OF ANY RECORD, MONUMENT OCCUPATIONAL, TESTIMONIAL OR OTHER EVIDENCE CONSIDERED:

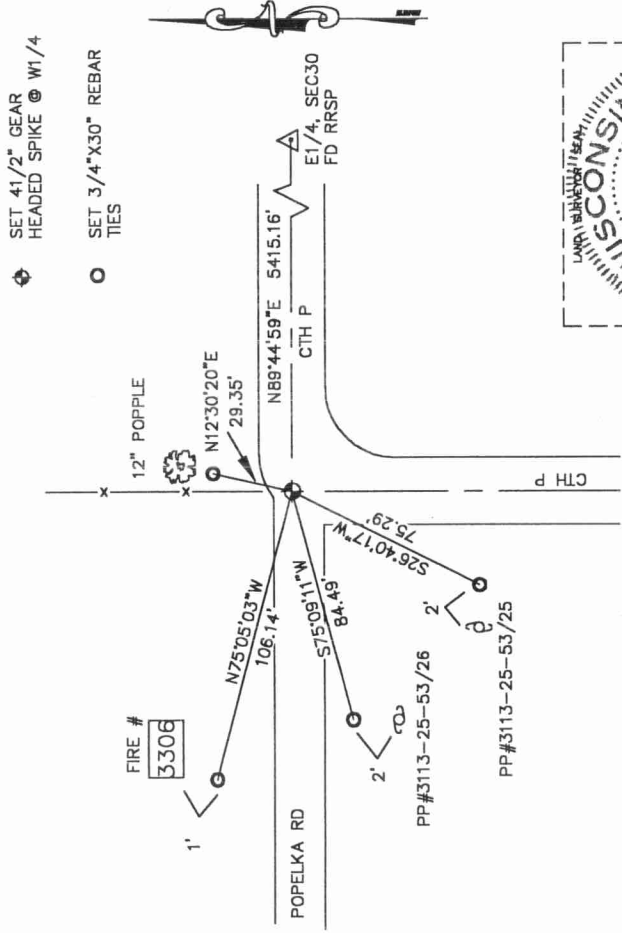
Original Corner established by James McBride in 1857. Original Bearing Trees: Sugar Maple, 13" N70W 16.5lks., Yellow Birch S32E 37lks. In 1902, Webley ran a line west from the East 1/4 of Section 30 to the West 1/4 with a distance of 5419.26' (our measured distance is 5415.16') and found both original BT's standing. Hutchinson, (no date) visited the West 1/4 of Sec 30 and set a new BT: Birch 14" N601/4W, 42lks. In 1987, William Kelly "located RR spike at intersection Co Tk P and property line fence to north identified by resident witness as corner location". On August 22, 2000 Charley Brinkmeier and Gerry Bahar visited the corner and found RR Spike gone due to new pavement. We found 3 of Kelly's 4 ties in Norway Pines to the SW. We set a 4 1/2" Gear Headed Spike at the intersection of his tie distances and retied.



SECTION 30
 TOWNSHIP 31 NORTH, RANGE 14 EAST
 TOWN OF WOLF RIVER
 LANGLADE COUNTY, WISCONSIN

- CORNER WAS: (CHECK ALL THAT APPLY)
- RESTORED THROUGH ACCEPTANCE OF AN OBLITERATED EVIDENCE LOCATION
 - RESTORED THROUGH ACCEPTANCE OF A FOUND PERPETUATED LOCATION
 - CONSIDERED A LOST CORNER AND REESTABLISHED THROUGH LOST CORNER PROPORTIONATE METHODS (INCLUDE A PLAN VIEW DRAWING SHOWING DISTANCES AND DIRECTIONS TO OTHER PUBLIC LAND SURVEY CORNERS USED FOR PROPORTIONING AND DETERMINING THE CORNER LOCATION)
 - DISTANCES OR REESTABLISHED IN A LOCATION THAT DIFFERS FROM A PREVIOUS RESTORATION OR REESTABLISHMENT (INCLUDE A PLAN VIEW DRAWING AND INDICATE WHAT WAS SET AND/OR FOUND)
 - CHECK IF THERE IS ADDITIONAL INFORMATION ON BACK

DESCRIBE THE MONUMENT AND ACCESSORIES USED TO PERPETUATE THE LOCATION OF THE CORNER. (INCLUDE A PLAN VIEW DRAWING AND INDICATE WHAT WAS SET AND/OR FOUND) ALSO INCLUDE FOUR TIES TO THE SECTION CORNER AND DESCRIPTION OF THE TIES.



DANIEL E. HIGGINBOTHAM

(TYPE OR PRINT NAME) CERTIFY THAT THE CORNER LOCATION SHOWN ON THIS RECORD WAS DETERMINED BY ME OR UNDER MY DIRECTION AND CONTROL, AND THAT THIS U.S. PUBLIC LAND SURVEY MONUMENT RECORD IS CORRECT AND COMPLETE TO THE BEST OF MY KNOWLEDGE AND BELIEF.

Daniel E. Higginbotham
 SIGNATURE

10/23/00
 DATE



T1 31-14
 INDEX NO.

