

43113 23 0000

# U.S. PUBLIC LAND SURVEY MONUMENT RECORD

(Prepared and as required by S. A-E 7.08 WI Administrative Code)

The Southwest corner of Section 24, T.31N., R.13E., Langlade County, WI  
Corner was (check all that apply)

- Restored through acceptance of an obliterated evidence location.
- Restored through acceptance of a found perpetuated location.
- Determined to be lost and re-established through proportionate methods. (show bearings and distances to PLSS corners used for proportioning.)
- Restored/recovered/re-established in a location that differs from a previously established position. (Show difference in plan view below.)
- Check here if additional information is shown on the reverse side of this form.

**Describe record evidence, recovered physical evidence, occupational evidence, testimonial evidence, and all other evidence considered in the recovery/restoration of the corner.**

Original- James Mcbride 1857- Set corner post and BT's; Birch 20° N 81° W, 8 Inks; Hemlock 10° N 03° E, 11 Inks; Hemlock 6° S 80° E, 20 Inks; Hemlock 24° S 43° W, 67 Inks.

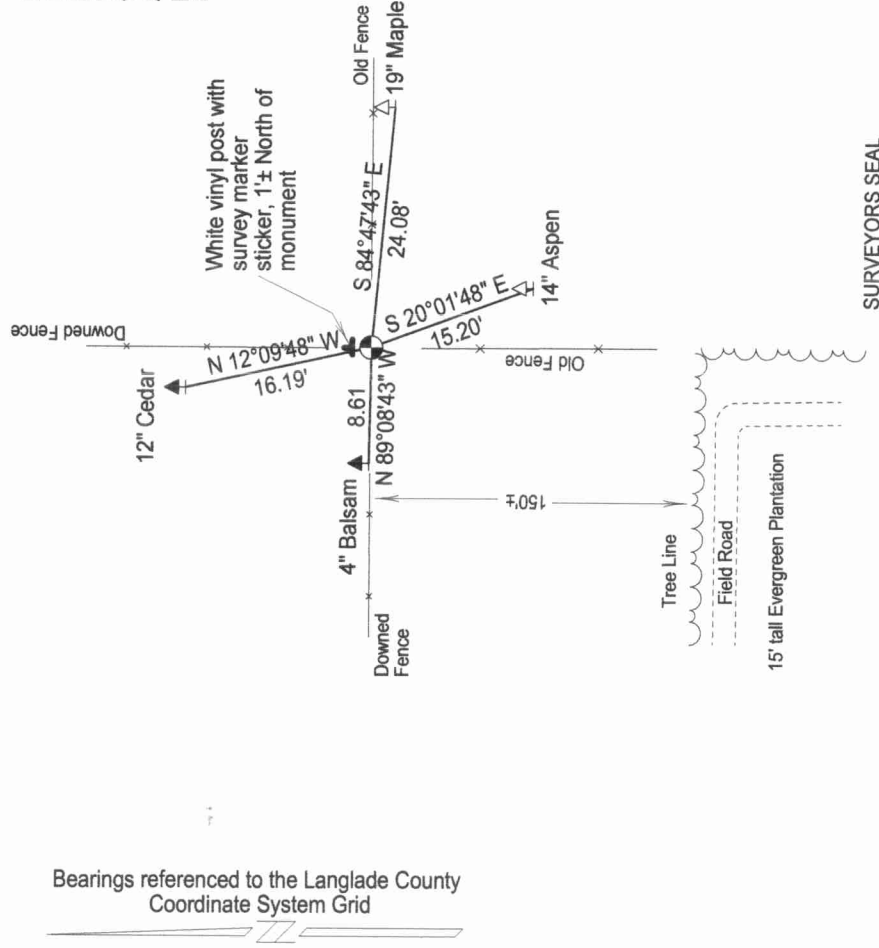
1946± C. Dvorak Subdivided Sections 23 & 26. Subsequent surveys have ben unable to retrace his work.

2007- I surveyed Section 24 and found a fence intersection at the Southwest corner and accepted this fence intersection as the best available evidence of the corner location.

### Physical description of the monument set:

In 2007, I set a 2.375" X 30" iron pipe with a brass cap as the corner, a white vinyl post 1± North, and four new bearing trees as shown below.

Describe the accessories used to perpetuate the location of the corner. Include a plan view drawing and indicate accessories found/set. Describe measuring point on bearing trees. Show any topographic features that would aid in future recovery of the corner.

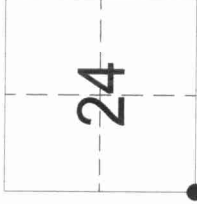


Bearings referenced to the Langlade County Coordinate System Grid

### Notes:

Not drawn to any scale.  
Bearings and distances measured to nail in the side of bearing trees, utilizing a total station.  
All bearing trees have Langlade County plaque and aluminum nail on side of tree near base.

The Southwest  
Corner of Section 24  
T. 31 N. R. 13 E.  
Langlade County, WI



● = Location of corner

INDEX No. **R - 21** (31-13)



Timothy J. Rusch

I, \_\_\_\_\_ certify that the corner location shown on this record was determined by me or under my direction and control and that this U.S. Public Land Survey Monument Record is correct and complete to the best of my knowledge and belief.

*Timothy J. Rusch*  
Signature 11-03-2008  
Date

