

U.S. PUBLIC LAND SURVEY MONUMENT RECORD

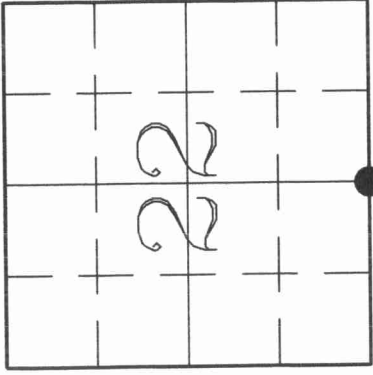
43/13220020

HISTORY OF ORIGINAL CORNER ESTABLISHMENT AND SUBSEQUENT RESTORATION AND DESCRIPTION OF ANY RECORD, MONUMENT OCCUPATIONAL, TESTIMONIAL OR OTHER EVIDENCE CONSIDERED:

The original quarter corner was established in 1857 by James McBride. Original BT's: Ironwood 6", N10E 35 lks., Ironwood 6", S38W 23lks.

In the early 1900's County Surveyor Hutchinson visited the S1/4 as he ran the South Line of Sec 22 with a total distance of 5312.01' (80.485 chains) and a distance of 2702.37' (40.945 chains) from the SE Cor to the S1/4. In April 1984, former surveyor Kelly "replaced broken monument with 3" Aluminum Cap Monument", at the S1/4 location. In April 2002, Charlie Brinkmeier and Gerry Bahar found Kelly's monument along an E-W fence on a treeline, but it did not match up well with Hutchinson's distances. We took our total distance from the SE Cor to the SW Cor (5303.81') and applied it to Hutchinson's total distance, then applied the proration to Hutchinson's distance from the SE Cor to the S 1/4 to arrive at a distance of 2698.17'. This location matches well E-W with a fence corner and pipe 1/4 mile to the North. We accepted our computed spot as the correct location for the S 1/4 and set a Langlade Co. Brass Cap Monument along the E-W fenceline at our prorated distance (CHECK ALL THAT APPLY)


● = LOCATION OF CORNER



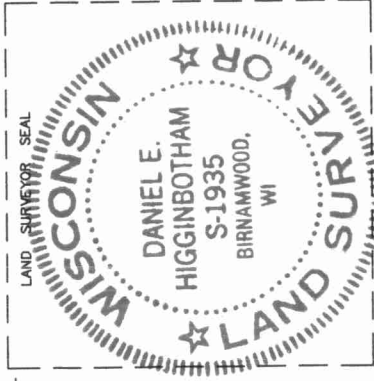
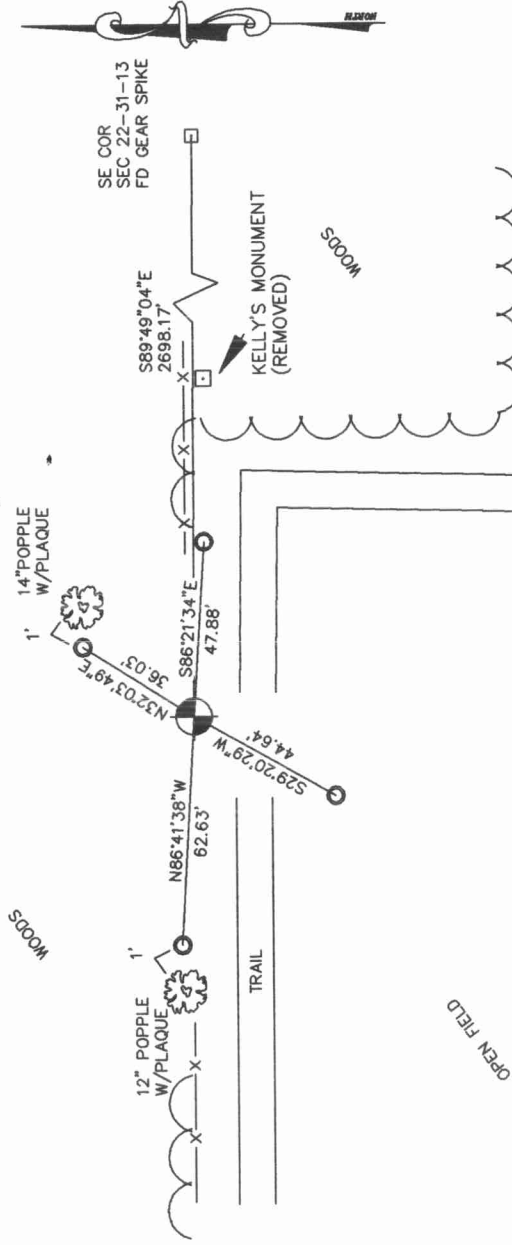
SECTION 22
 TOWNSHIP 31 NORTH, RANGE 13 EAST
 TOWN OF EVERGREEN
 LANGLADE COUNTY, WISCONSIN

- RESTORED THROUGH ACCEPTANCE OF AN OBLITERATED EVIDENCE LOCATION
- RESTORED THROUGH ACCEPTANCE OF A FOUND PERPETUATED LOCATION
- CONSIDERED A LOST CORNER AND REESTABLISHED THROUGH LOST CORNER PROPORTIONATE METHODS (INCLUDE A PLAN VIEW DRAWING SHOWING DISTANCES AND DIRECTIONS TO OTHER PUBLIC LAND SURVEY CORNERS USED FOR PROPORTIONING AND DETERMINING THE CORNER LOCATION)
- RESTORED OR REESTABLISHED IN A LOCATION THAT DIFFERS FROM A PREVIOUS RESTORATION OR REESTABLISHMENT (INCLUDE A PLAN VIEW DRAWING AND INDICATE WHAT WAS SET AND/OR FOUND)
- CHECK IF THERE IS ADDITIONAL INFORMATION ON BACK

DESCRIBE THE MONUMENT AND ACCESSORIES USED TO PERPETUATE THE LOCATION OF THE CORNER. (INCLUDE A PLAN VIEW DRAWING AND INDICATE WHAT WAS SET AND/OR FOUND) ALSO INCLUDE FOUR TIES TO THE SECTION CORNER AND DESCRIPTION OF THE TIES.

 SET 2"X30" PIPE WITH BRASS CAP
 LANGLADE CO. MONUMENT
 WHICH BEARS N 87°59'20"W
 92.53' FROM KELLY'S FORMER
 MONUMENT LOCATION

 SET 3/4"X30" REBAR
 TIE LOCATIONS



DANIEL E. HIGGINBOTHAM

(Type or print name) CERTIFY THAT THE CORNER LOCATION SHOWN ON THIS RECORD WAS DETERMINED BY ME OR UNDER MY DIRECTION AND CONTROL AND THAT THIS U.S. PUBLIC LAND SURVEY MONUMENT RECORD IS CORRECT AND COMPLETE TO THE BEST OF MY KNOWLEDGE AND BELIEF.

 SIGNATURE

7/28/03 DATE

R15 INDEX NO.

