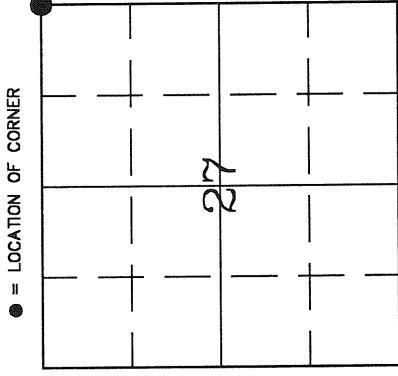


# U.S. PUBLIC LAND SURVEY MONUMENT RECORD

HISTORY OF ORIGINAL CORNER ESTABLISHMENT AND SUBSEQUENT RESTORATION AND DESCRIPTION OF ANY RECORD, MONUMENT OCCUPATIONAL, TESTIMONIAL OR OTHER EVIDENCE CONSIDERED:

THE ORIGINAL CORNER WAS ESTABLISHED IN 1857 BY JAMES MCBRIDE. ORIGINAL BEARING TREES: HEMLOCK 10" N33W 40LKS., HEMLOCK 12" N23E 27LKS., SUGAR MAPLE 7" S72E 48LKS., HEMLOCK 12" S28W 14LKS. ON APRIL 13, 1899, DON BUZA AND GERRY BAHAR SEARCHED FOR CORNER AND FOUND NOTHING. THE LOCATION FOR THIS CORNER WAS SET USING PROPORTIONS FROM MAP # 40160 FOUND AT COUNTY SURVEYOR'S OFFICE CIRCA 1946 BY CARL DORAK(SP?). THE NORTH-SOUTH DISTANCE WAS PROPORTIONED WHILE THE CORNER WAS SET ON CL OF CTH P.

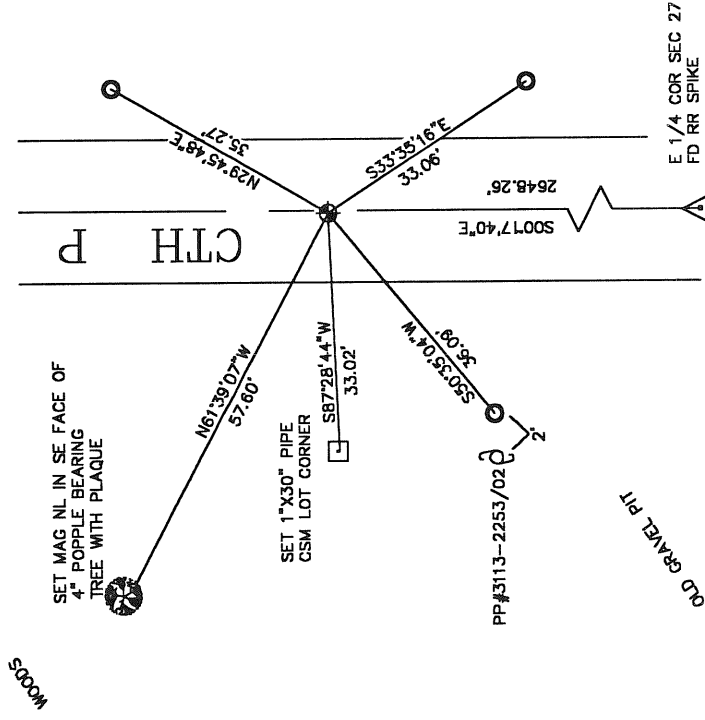


SECTION 27  
 TOWNSHIP 31 NORTH, RANGE 13 EAST  
 TOWN OF EVERGREEN  
 \_\_\_\_\_  
 LANGLADE COUNTY, WISCONSIN

CORNER WAS: (CHECK ALL THAT APPLY)

- RESTORED THROUGH ACCEPTANCE OF AN OBLITERATED EVIDENCE LOCATION
- RESTORED THROUGH ACCEPTANCE OF A FOUND PERPETUATED LOCATION
- CONSIDERED A LOST CORNER AND REESTABLISHED THROUGH LOST CORNER PROPORTIONATE METHODS (INCLUDE A PLAN VIEW DRAWING SHOWING DISTANCES AND DIRECTIONS TO OTHER PUBLIC LAND SURVEY CORNERS USED FOR PROPORTIONING AND DETERMINING THE CORNER LOCATION)
- RESTORED OR REESTABLISHED IN A LOCATION THAT DIFFERS FROM A PREVIOUS RESTORATION OR REESTABLISHMENT (INCLUDE A PLAN VIEW DRAWING AND INDICATE WHAT WAS SET AND/OR FOUND)
- CHECK IF THERE IS ADDITIONAL INFORMATION ON BACK

DESCRIBE THE MONUMENT AND ACCESSORIES USED TO PERPETUATE THE LOCATION OF THE CORNER. (INCLUDE A PLAN VIEW DRAWING AND INDICATE WHAT WAS SET AND/OR FOUND) ALSO INCLUDE FOUR TIES TO THE SECTION CORNER AND DESCRIPTION OF THE TIES.



3113220000



SET SURVEY MARKER PIN  
 ● CORNER LOCATION

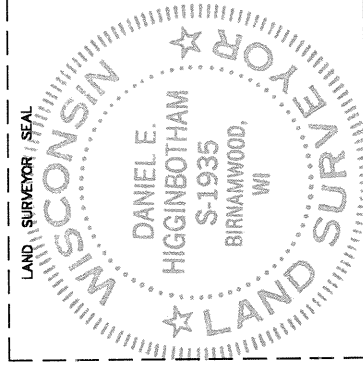
SET 3/4" X 30" REBAR  
 AS TIES

DANIEL E. HIGGINBOTHAM

(Type or print name) CERTIFY THAT THE CORNER LOCATION SHOWN ON THIS RECORD WAS DETERMINED BY ME OR UNDER MY DIRECTION AND CONTROL AND THAT THIS U.S. PUBLIC LAND SURVEY MONUMENT RECORD IS CORRECT AND COMPLETE TO THE BEST OF MY KNOWLEDGE AND BELIEF.

*Daniel E. Higginbotham*  
 \_\_\_\_\_  
 SIGNATURE

2/28/00  
 \_\_\_\_\_  
 DATE



R17

INDEX NO.