

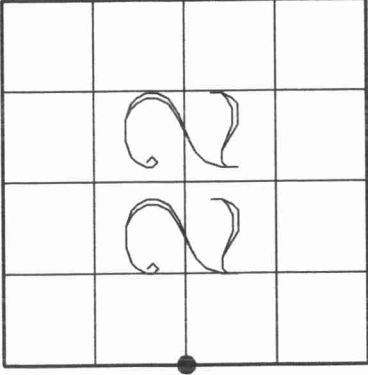
U.S. PUBLIC LAND SURVEY MONUMENT RECORD

4311321 2000

HISTORY OF ORIGINAL CORNER ESTABLISHMENT AND SUBSEQUENT RESTORATION AND DESCRIPTION OF ANY RECORD, MONUMENT OCCUPATIONAL, TESTIMONIAL OR OTHER EVIDENCE CONSIDERED:

The original quarter corner was established in 1857 by James McBride. Original BT's: Sugar Maple 7" N56W 24lks., Sugar Maple 6" S88E 27lks.

In the early 1900's, County Surveyor Hutchinson visited the W 1/4 as he ran the West line of Sec 22 with a total distance of 5356.23' (81.155 chains) and a distance of 2721.18' (41.23 chains) from the SW Cor to the W1/4. In April 2002, Charlie Brinkmeier and Gerry Bahar searched for quarter corner at CL-CL intersection and found a 3/4" rod which Tom Arnott had set in July 1994, replacing a bent RR Spike which Kelly had set in Dec 1983. This location did not match up with an old E-W fence line running East from a spot about 48' North of CL-CL. We took our total distance from the SW Cor to the NW Cor (5336.85') and applied it to Hutchinson's total distance, then applied the proration to Hutchinson's distance from the SW Cor to the W1/4 to arrive at a distance of 2711.40', which matched the fence running East. We accepted this spot as the correct location and set a Gear Headed Spike and tied out.



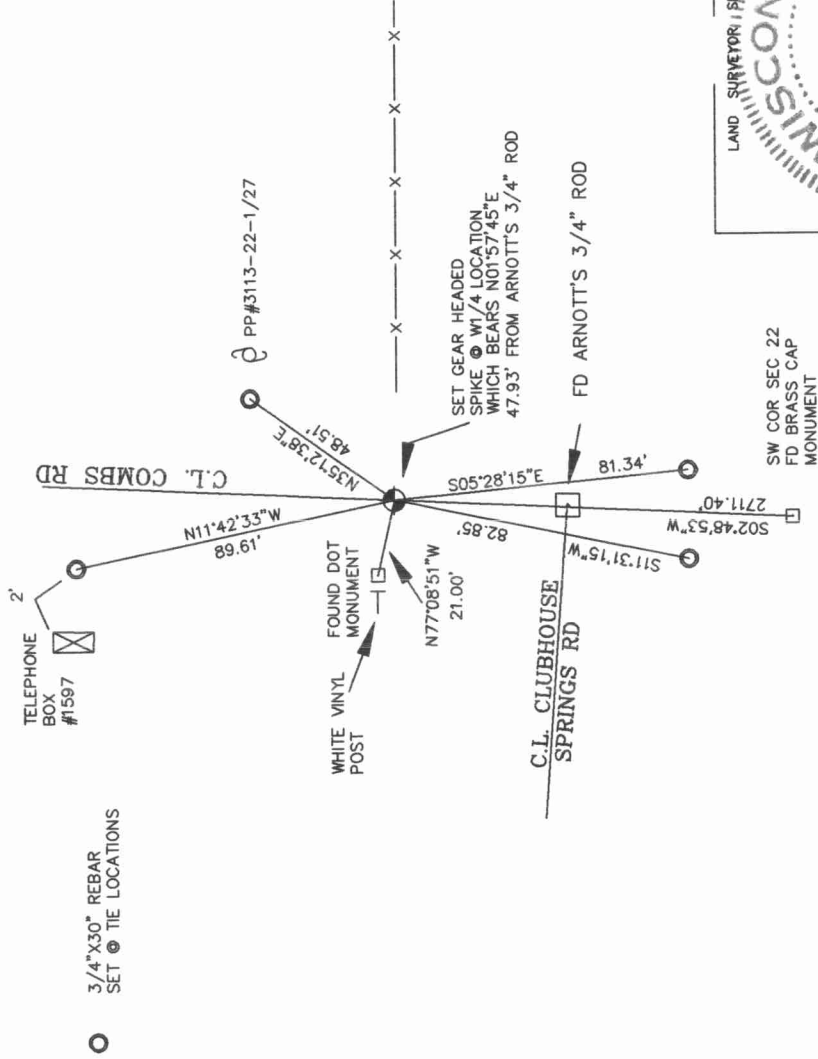
● = LOCATION OF CORNER

SECTION 22
 TOWNSHIP 31 NORTH, RANGE 13 EAST
 TOWN OF EVERGREEN
 LANGLADE COUNTY, WISCONSIN

CORNER WAS: (CHECK ALL THAT APPLY)

- RESTORED THROUGH ACCEPTANCE OF AN OBLITERATED EVIDENCE LOCATION
- RESTORED THROUGH ACCEPTANCE OF A FOUND PERPETUATED LOCATION
- CONSIDERED A LOST CORNER AND REESTABLISHED THROUGH LOST CORNER PROPORTIONATE METHODS (INCLUDE A PLAN VIEW DRAWING SHOWING DISTANCES AND DIRECTIONS TO OTHER PUBLIC LAND SURVEY CORNERS USED FOR PROPORTIONING AND DETERMINING THE CORNER LOCATION)
- RESTORED OR REESTABLISHED IN A LOCATION THAT DIFFERS FROM A PREVIOUS RESTORATION OR REESTABLISHMENT (INCLUDE A PLAN VIEW DRAWING AND INDICATE WHAT WAS SET AND/OR FOUND)
- CHECK IF THERE IS ADDITIONAL INFORMATION ON BACK

DESCRIBE THE MONUMENT AND ACCESSORIES USED TO PERPETUATE THE LOCATION OF THE CORNER. (INCLUDE A PLAN VIEW DRAWING AND INDICATE WHAT WAS SET AND/OR FOUND) ALSO INCLUDE FOUR TIES TO THE SECTION CORNER AND DESCRIPTION OF THE TIES.



DANIEL E. HIGGINBOTHAM

(Type of print name) CERTIFY THAT THE CORNER LOCATION SHOWN ON THIS RECORD WAS DETERMINED BY ME OR UNDER MY DIRECTION AND CONTROL AND THAT THIS U.S. PUBLIC LAND SURVEY MONUMENT RECORD IS CORRECT AND COMPLETE TO THE BEST OF MY KNOWLEDGE AND BELIEF.

D. Higginbotham
 SIGNATURE

7/28/03
 DATE

