

4311320 2020

U.S. PUBLIC LAND SURVEY MONUMENT RECORD

(Prepared and as required by S. A-E 7.08 WI Administrative Code)

The CENTER 1/4 corner of Section 20, T. 31 N., R. 13 E., Langlade County, WI
Corner was (check all that apply)

- Restored through acceptance of an obliterated evidence location.
- Restored through acceptance of a found perpetuated location.
- Determined to be lost and re-established through proportionate methods. (show bearings and distances to PLSS corners used for proportioning.)
- Restored/recovered/re-established in a location that differs from a previously established position. (Show difference in plan view below.)
- Check here if additional information is shown on the reverse side of this form.

Describe record evidence, recovered physical evidence, occupational evidence, testimonial evidence, and all other evidence considered in the recovery/restoration of the corner.
THIS CORNER WAS NOT SET AS PART OF THE ORIGINAL GOVERNMENT SURVEY.

1908 - Surveyor Hutchinson subdivided Section 20, establishing the center 1/4 corner at the intersection of the 1/4 lines. Old field notes did not indicate what was set to monument the corner location, but he indicated two witness trees; Hemlock 18" S66°W, 55lks; and Birch 10" S52°E, 35 1/2 lks.

1913 - Surveyor Hutchinson did additional work in Section 20, utilizing his 1908 center 1/4 corner.

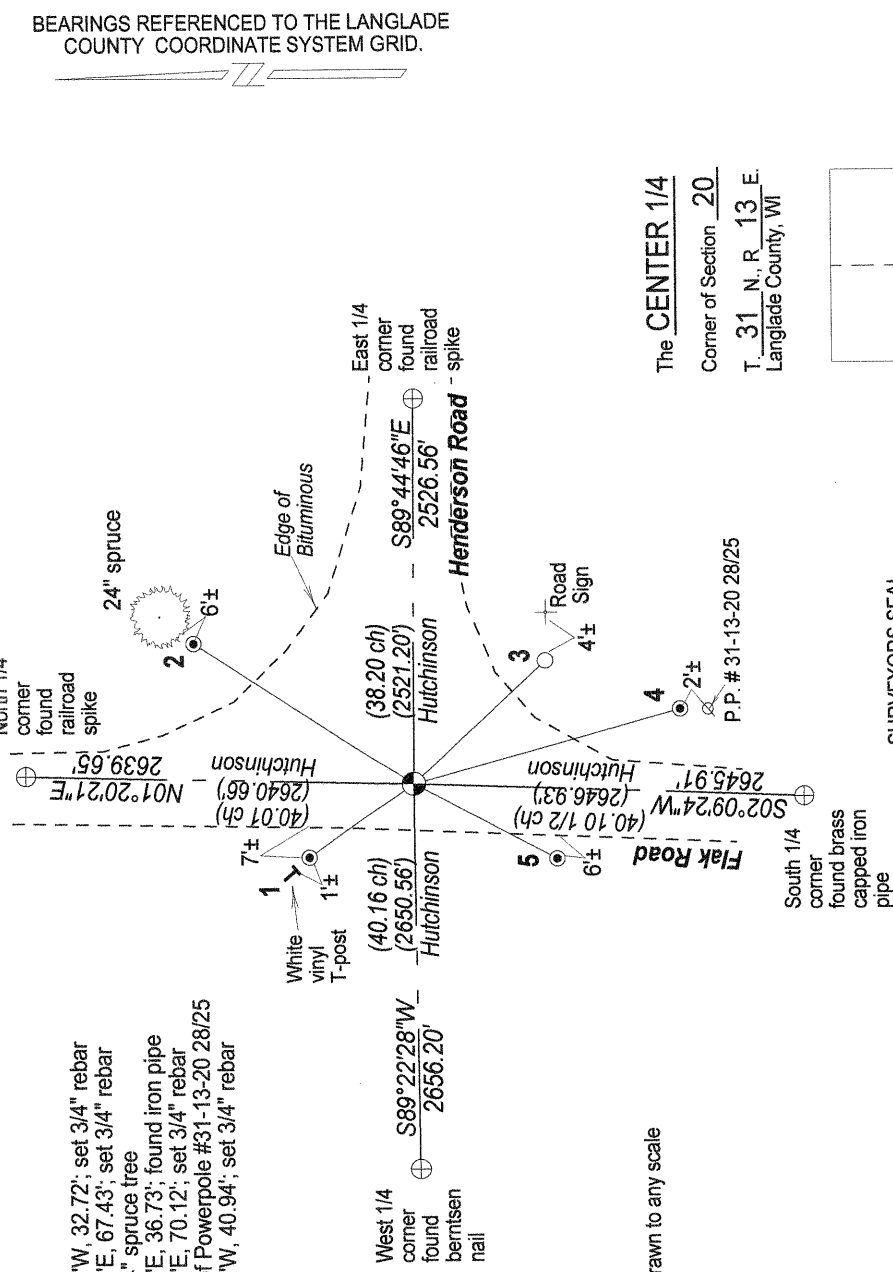
2010 - I surveyed Section, now finding "T" intersection of town roads (Flak Road running North and South, Henderson Road running East). I did not find any evidence of the center 1/4, with the exception of the roads. My measurements of the North-South 1/4 line were within 2'± North-South of Hutchinson, and East-West within 11'±. I re-established the corner in proportion to Hutchinson's distances.

Physical description of the monument set:

2010 - I set a 3" Mag Nail at the corner location and tied it out as follows.

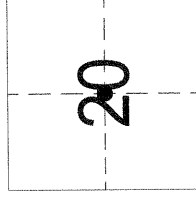
Describe the accessories used to perpetuate the location of the corner. Include a plan view drawing and indicate accessories found/set. Describe measuring point on bearing trees. Show any topographic features that would aid in future recovery of the corner.

- 1 - N35°23'19"W, 32.72'; set 3/4" rebar
- 2 - N33°00'57"E, 67.43'; set 3/4" rebar
- 3 - S43°47'41"E, 36.73'; found iron pipe
- 4 - S15°45'09"E, 70.12'; set 3/4" rebar
- 5 - S28°41'28"W, 40.94'; set 3/4" rebar



Not drawn to any scale

The CENTER 1/4
Corner of Section 20
T. 31 N., R. 13 E.
Langlade County, WI

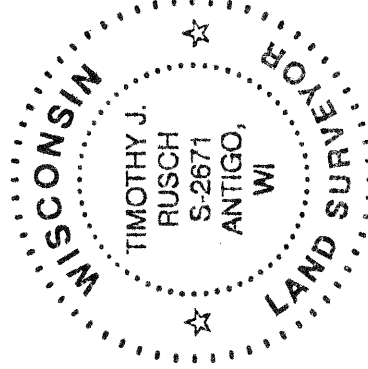


INDEX No. **P7**

(31-13)

● = Location of corner

SURVEYORS SEAL



I, Timothy J. Rusch, certify that the corner location shown on this record was determined by me or under my direction and control and that this U.S. Public Land Survey Monument Record is correct and complete to the best of my knowledge and belief.

Timothy J. Rusch 02-18-2011
Signature Date