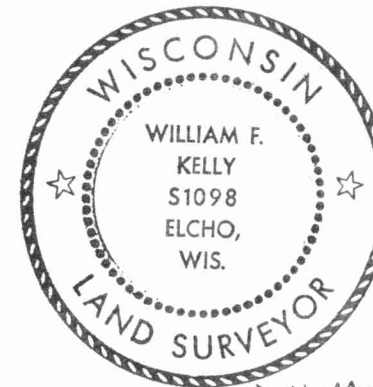


CERTIFIED LAND CORNER RESTORATION

Index No. R-6

State of Wisconsin }
 County of LANGLADE } ss.

History of original corner establishment:



William F. Kelly

I WILLIAM F. Kelly, do hereby certify that on the 24th day of May, 1978, I found evidence of the E 1/4 corner of Section 20 Township 31, North, Range 13E, Fourth Principal Meridian, as described hereon; and that from this evidence I established a new monument and accessories as described hereon to perpetuate the original location of this corner.

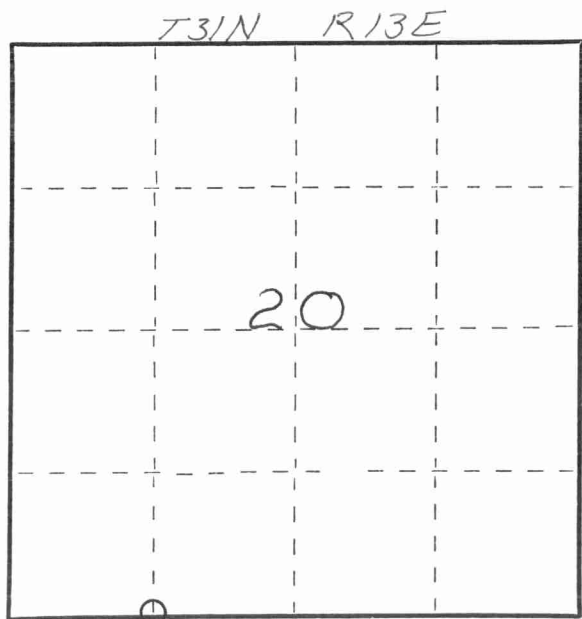
Description of corner evidence found:

CORNER LOCATED AT MID-POINT BETWEEN SW COR. SEC. 20, & THE S 1/4 COR. SEC. 20, T31N, R13E.

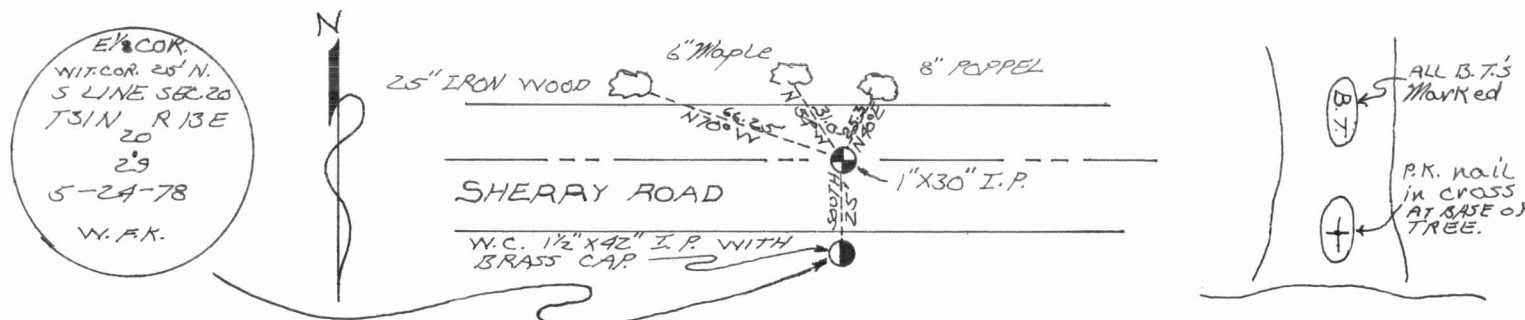
Resident witnesses:

.....

Description of monument and accessories I established to perpetuate the original location of this corner.



○ = Corner monument restored.



Dated at ELCHO, Wis., this 6th day of OCTOBER, 1978.

Signature William F. Kelly Title COUNTY LAND SURVEYOR Registration No. S-1098
 (County Surveyor, Registered Land Surveyor, or other duly authorized official)

Office of Register of Deeds, County of....., I hereby certify that the within instrument was filed in this office for record on the..... day of....., 19..... at..... o'clock..... M.

.....
 (Register of Deeds)

By..... Deputy

