

431320 000 1994

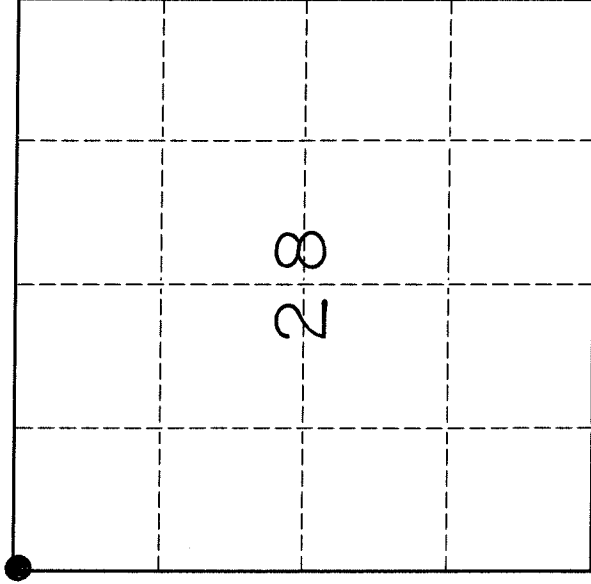
U. S. PUBLIC LAND SURVEY MONUMENT RECORD

INSTRUCTIONS:

This record shall show the location of the corner and shall include all of the following nine elements (a through i).

- (a) Identify the corner by reference to the U.S. public land survey system.
- O = Corner monument restored.

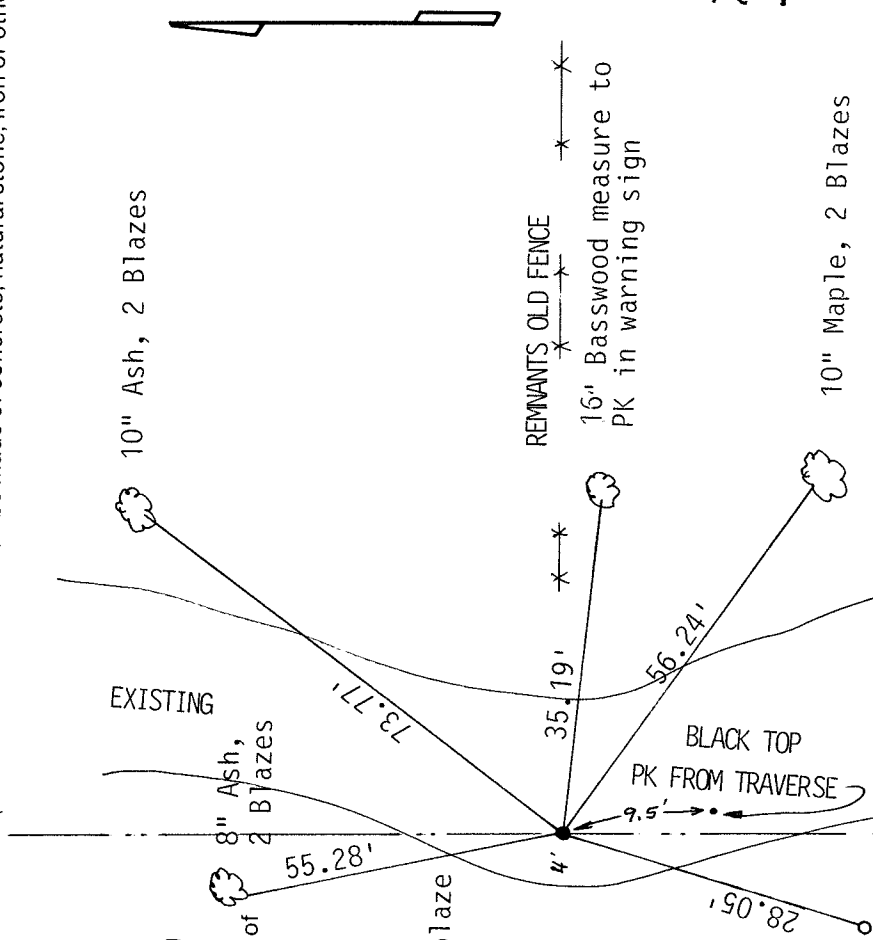
Northwest Corner Section 28-31-13
 Town of Evergreen
 Set 1 1/4" Iron Bar Flush with Black Top



- (b) Describe any record evidence, monument evidence, occupational evidence, testimonial evidence or any other material evidence you considered, and whether the monument was found or placed.

Notes of Hutchinson talk of witness trees being 30 feet away. I would guess original corner was set before existing road. Roadway is cut into steep hillside, no large trees are that close. Found old fence line laying down, going to East. 1/8 corner was set East of here, held fence line at road, and traversed to 1/8 corner calculated location. Matched existing fence, found old fence corner, or gate (laying down) I feel that I have the East - West 1/4 line located. Straight lined from West 1/4 corner Section 21, to West 1/4 corner Section 28. Intersected with fence line. Set 1 1/4" Iron Bar, tied out.

- (c) In the plan view drawing below, provide reference ties to at least 4 witness monuments, or, if the location is within a municipality, to at least 2 witness monuments. (Witness monuments shall be made of concrete, natural stone, iron or other equally durable material.) Describe witness monuments.



- (d) Show a plan view drawing depicting the relevant monuments and reference ties which is sufficient in detail to enable accurate relocation of the corner monument if the corner monument is disturbed. Indicate north.

Trees with 2 blazes have a blaze head high with warning plaque, and 2 1/2" PK in lower blaze to be measured to.

R9

1 1/4" Iron Pipe with white warning post

10" Maple, 2 Blazes

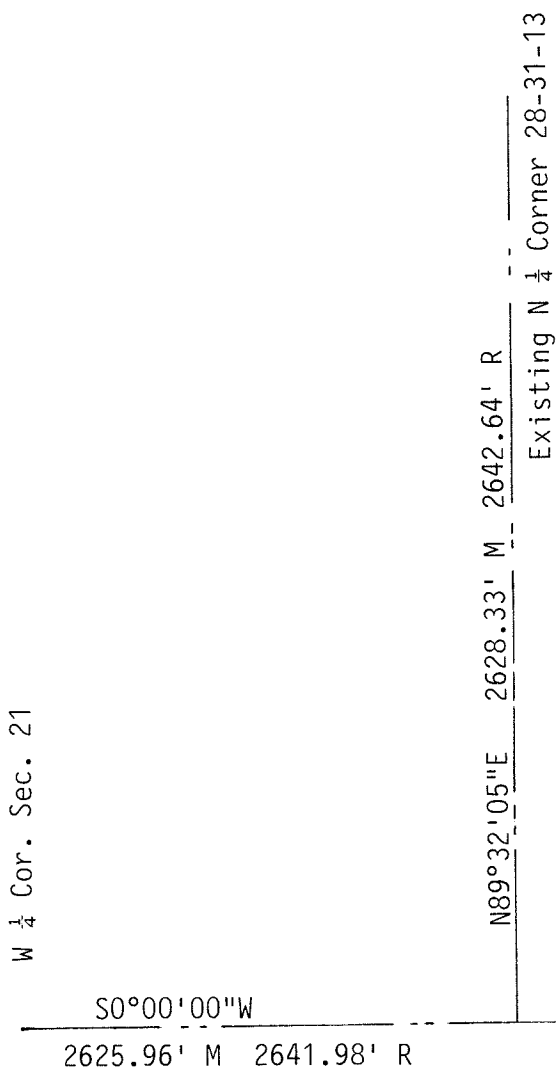
Describe any material discrepancy between the location of the corner as restored or reestablished and the location of that corner as previously restored or reestablished by distance and direction. Show the discrepancy on the plan view drawing under (d), above. Show the distances between the corner as previously restored or reestablished and (1) the corner as restored or reestablished, and (2) to at least 2 of the witness monuments shown on the drawing in (d), above.

No discrepancy

(f) Was the corner restored through acceptance of (1) an obliterated evidence location, or, (2) a found perpetuated location.?

Held old East West fence as evidence of Section line. Held $\frac{1}{4}$ Corners to North and South as line. Road wanders through steep hills in this area.

(g & h) Was the corner reestablished through lost corner proportionate methods? If so, show the method, including the directions and distances to other public land survey corners used as evidence or used for proportioning in determining the corner location.



Record dimensions are from Hutchinson Notes of 1918

(i) I, David L. Osterbrink RLS NO. S-2014

(type or print name)

certify that the corner location shown on this record was determined by me or under my direction and control and that this U.S. Public Land Survey Monument Record is correct and complete to the best of my knowledge and belief.

David L. Osterbrink 6-25-94

Signature

Date

