

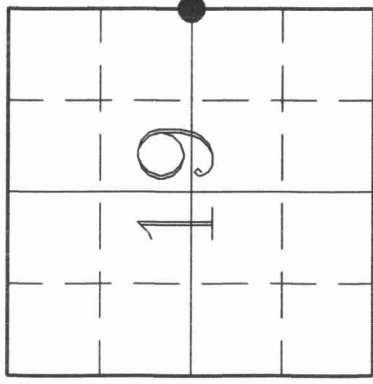
# U.S. PUBLIC LAND SURVEY MONUMENT RECORD

43113192000

**HISTORY OF ORIGINAL CORNER ESTABLISHMENT AND SUBSEQUENT RESTORATION AND DESCRIPTION OF ANY RECORD, MONUMENT OCCUPATIONAL, TESTIMONIAL OR OTHER EVIDENCE CONSIDERED:**

The original corner was established in 1857 by James McBride. Original Bearing Trees: Birch 14" S63E 23 lks, Elm 10" N62W 16lks. In 1913-1914, Surveyor Hutchinson ran the line between sections 19 and 20 with distances of 40 chains between the Cor of Sec 19 and the E1/4, and 40.10 chains between the E1/4 and the NE Cor. On Jan 17, 2003, Gerry Bahar and Matt Huska searched for quarter corner, found nothing except a fence-line running East. The distance from the fence to the Section Corners north and south matched up well with the Hutchinson's distances, and also matched up well with the 40 line fences north and south. We accepted the fence as evidence of the original location and set a Survey Nail at the intersection of the fence with centerline of Muraski Road.

● = LOCATION OF CORNER



SECTION 19

TOWNSHIP 31 NORTH, RANGE 13 EAST

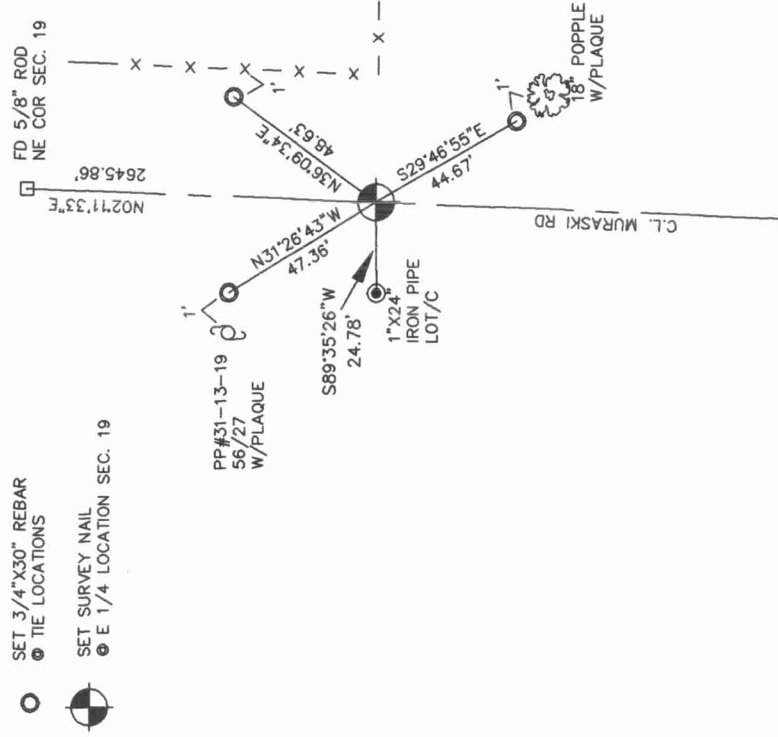
TOWN OF EVERGREEN

LANGLADE COUNTY, WISCONSIN

CORNER WAS: (CHECK ALL THAT APPLY)

- RESTORED THROUGH ACCEPTANCE OF AN OBLITERATED EVIDENCE LOCATION
- RESTORED THROUGH ACCEPTANCE OF A FOUND PERPETUATED LOCATION
- CONSIDERED A LOST CORNER AND REESTABLISHED THROUGH LOST CORNER PROPORTIONATE METHODS (INCLUDE A PLAN VIEW DRAWING SHOWING DISTANCES AND DIRECTIONS TO OTHER PUBLIC LAND SURVEY CORNERS USED FOR PROPORTIONING AND DETERMINING THE CORNER LOCATION)
- RESTORED OR REESTABLISHED IN A LOCATION THAT DIFFERS FROM A PREVIOUS RESTORATION OR REESTABLISHMENT (INCLUDE A PLAN VIEW DRAWING AND INDICATE WHAT WAS SET AND/OR FOUND)
- CHECK IF THERE IS ADDITIONAL INFORMATION ON BACK

DESCRIBE THE MONUMENT AND ACCESSORIES USED TO PERPETUATE THE LOCATION OF THE CORNER. (INCLUDE A PLAN VIEW DRAWING AND INDICATE WHAT WAS SET AND/OR FOUND) ALSO INCLUDE FOUR TIES TO THE SECTION CORNER AND DESCRIPTION OF THE TIES.



DANIEL E. HIGGINBOTHAM

(Type or print name) CERTIFY THAT THE CORNER LOCATION SHOWN ON THIS RECORD WAS DETERMINED BY ME OR UNDER MY DIRECTION AND CONTROL AND THAT THIS U.S. PUBLIC LAND SURVEY MONUMENT RECORD IS CORRECT AND COMPLETE TO THE BEST OF MY KNOWLEDGE AND BELIEF.

*Daniel E. Higginbotham*  
SIGNATURE

2/12/03  
DATE



P5

INDEX NO.

