

CERTIFIED LAND CORNER RESTORATION

Index No. R-5

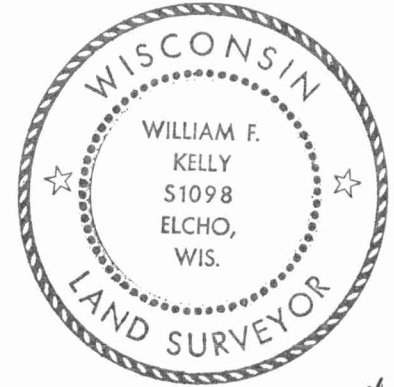
State of Wisconsin }
County of LAUGHLIN } ss.

History of original corner establishment:

I WILLIAM F. KELLY, do hereby certify that on the 15th day of MAY, 1978, I found evidence of the SECTION CORNER corner of SECTIONS 19, 20, 30, 29 Township 31, North, Range 13E, Fourth Principal Meridian, as described hereon; and that from this evidence I established a new monument and accessories as described hereon to perpetuate the original location of this corner.

Description of corner evidence found:

LOCATED A 4" BRASS CAP SET IN CONCRETE CORNER SET DURING RESURVEY IN 1930'S

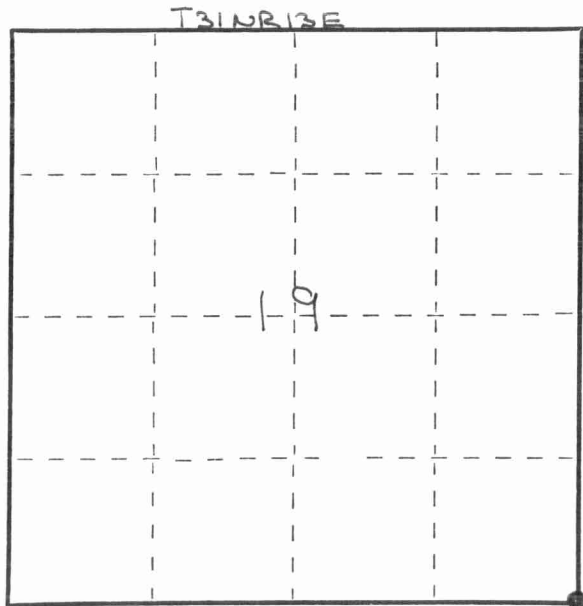
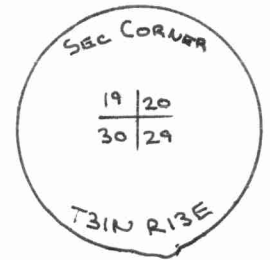
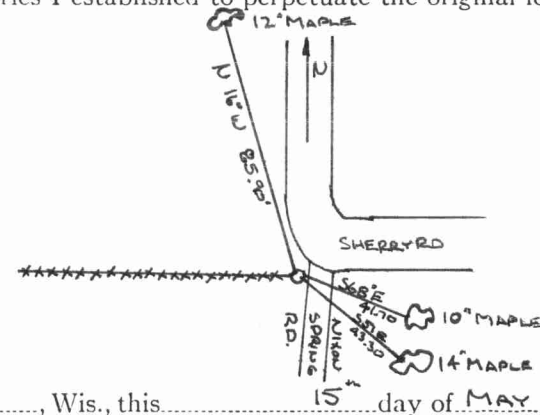


William F. Kelly

Resident witnesses:

.....
.....
.....

Description of monument and accessories I established to perpetuate the original location of this corner.



○ = Corner monument restored.

Dated at Elcho, Wis., this 15 day of MAY, 1978.

Signature William F. Kelly Title REGISTERED LAND SURVEYOR Registration No. S1098
(County Surveyor, Registered Land Surveyor, or other duly authorized official)

Office of Register of Deeds, County of, I hereby certify that the within instrument was filed in this office for record on the day of 19..... at o'clock M.

.....
(Register of Deeds)

By Deputy

FORM 985 H. C. MILLER CO., MILWAUKEE

