

431318 0020 1996

# U.S. PUBLIC LAND SURVEY MONUMENT RECORD

(Prepared and as required by S. A-E 7.08 WI Administrative Code)

The South 1/4 corner of Section 18, T. 31 N., R. 13 E., Langlade County, WI

Corner was: (check all that apply)

- Restored through acceptance of an obliterated evidence location.
- Restored through acceptance of a found perpetuated location.
- Determined to be lost and re-established through proportionate methods.  
(Show bearings and distances to PLSS corners used for proportioning.)
- Restored/recovered/reestablished in a location that differs from a previously established position. (Show difference in plan view below.)

Check here if additional information is shown on the reverse side of this form.

**Describe record evidence, recovered physical evidence, occupational evidence, testimonial evidence and all other evidence considered in the recovery/restoration of the corner.**

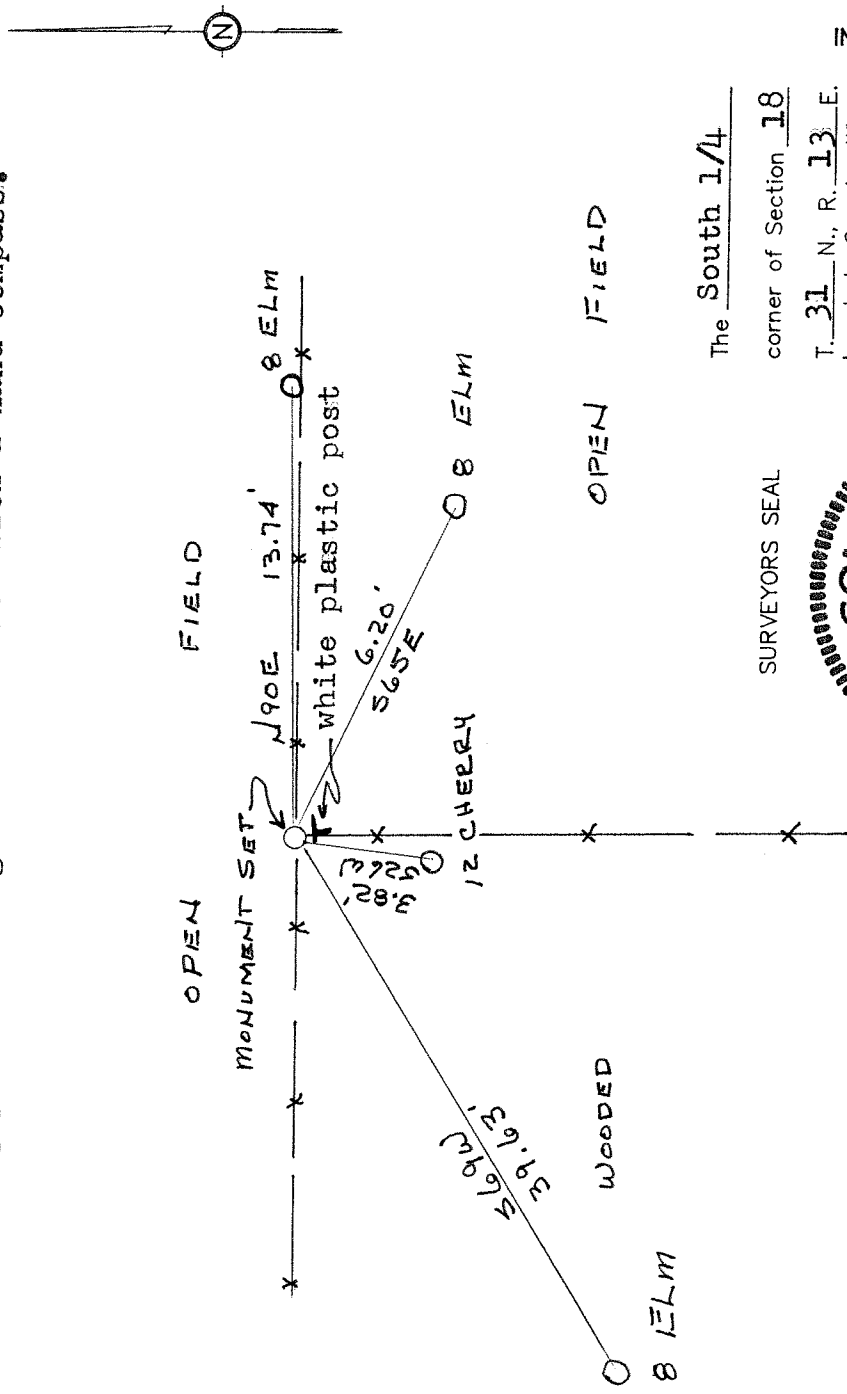
Found no other evidence other than a corner fence post. Fence lines lead east, west and south. The fence lines are old. **Accepted** this as the best possible location.

### Physical description of the monument set:

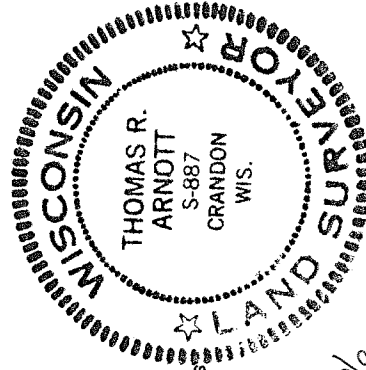
I set a 2 inch iron pipe with a 4 inch brass cap marked to identify the corner. Stones were piled around the corner.

Describe the accessories used to perpetuate the location of the corner. Include a plan view drawing and indicate accessories found/set. Describe measuring point on bearing trees. Show any topographic features that would aid in future recovery of the corner.

Ties are measured to aluminum nails in the sides of the trees. A blaze was cut at the stump of the tree and painted with red tree marking paint. Bearings were measured with a hand compass.



SURVEYORS SEAL



I, Thomas R. Arnott, certify that the corner location shown on this record was determined by me or under my direction and control and that this U.S. Public Land Survey Monument Record is correct and complete to the best of my knowledge and belief.

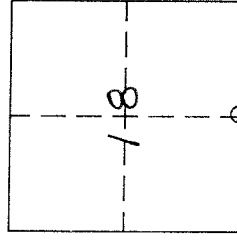
*Thomas R. Arnott*  
Signature

30 Oct 1996  
Date

The South 1/4 corner of Section 18

T. 31 N., R. 13 E. Langlade County, WI

INDEX No. N3



O = Location of corner