

LANGLADE COUNTY U.S. PUBLIC LAND SURVEY MONUMENT LOCATION RECORD

1315 2000

SECTION 15
TOWNSHIP 31 N
RANGE 13 E

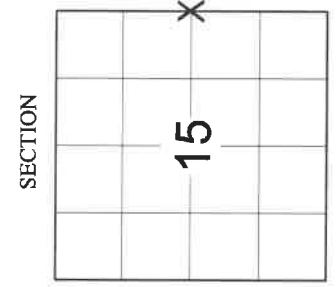
L17

NO.

LANDMARK BENCHMARK FOUND SET RESET RE-TIED

EVERGREEN
CITY, VILLAGE, TOWN

431315 2000 2021

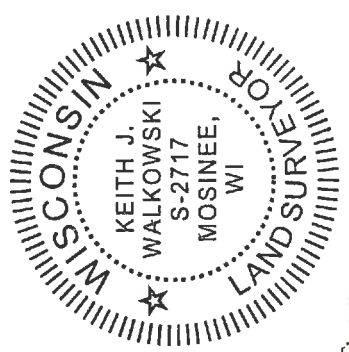


CORNER IDENTITY: SNM-1 STEEL NAIL MARKER
LANGLADE COUNTY COORDINATE: N: 350535.098
E: 699551.918
ELEVATION-(FEET): DATUM: NAD 83 (2011)
WEATHER: SUNNY
DATE OF SURVEY: 7/26/2021 TEMPERATURE: 84 °F
SURVEY PARTY: CHRISTOPHER FIERI / COLLIN MARQUARDT

BASIS FOR MONUMENT LOCATION:

(DESCRIBE METHOD OF SURVEY AND CORNER AUTHENTICATION)

SEARCHED FOR THE EAST 1/4 CORNER OF SECTION 15 AND FOUND A MAG NAIL AND THE FOUR TIES AS SHOWN ON THE RECORD TIE SHEET DATED 8-22-2007 BY DEAN WILLIAMS. ACCEPTED THE MAG NAIL AS THE CORNER AND SET A SNM-1 STEEL NAIL MARKER AT THE CORNER LOCATION UPON COMPLETION OF THE S.T.H. "64" RESURFACING PROJECT. PERPETUATED THE CORNER LOCATION AS SHOWN BELOW.

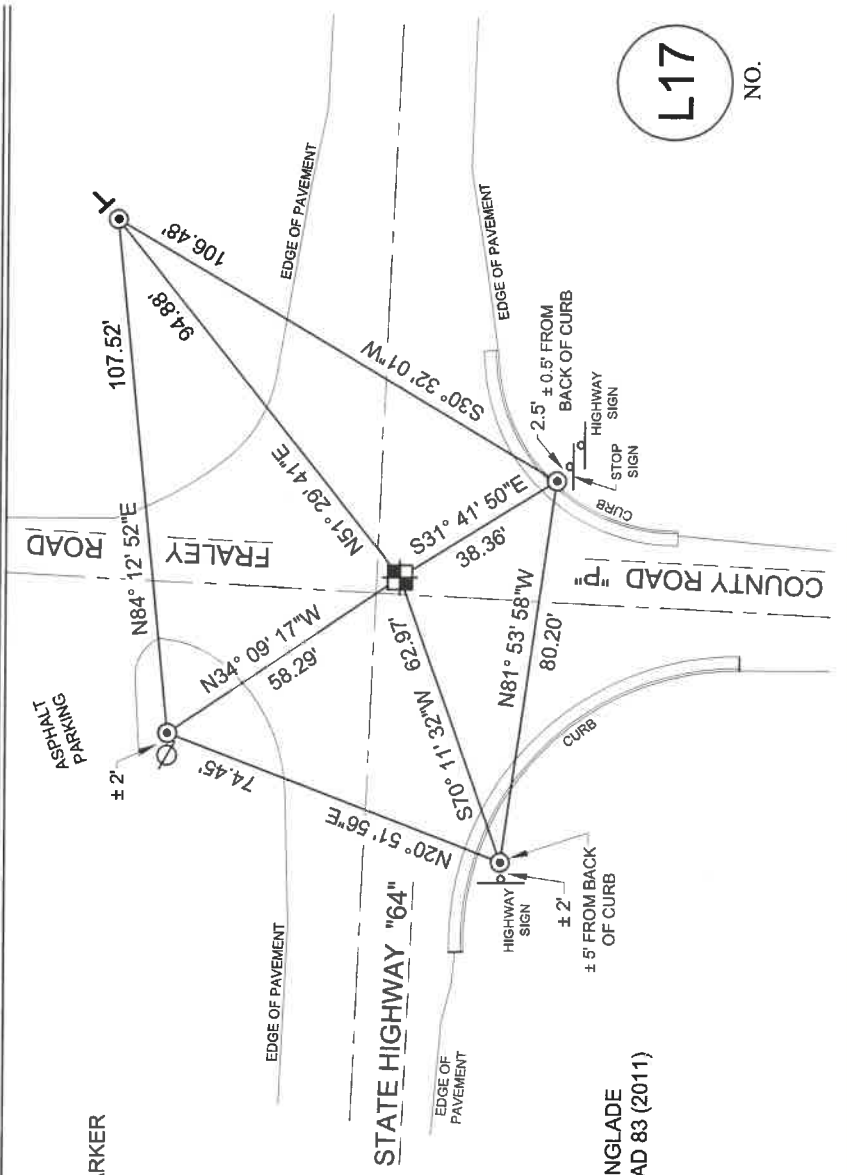


CERTIFIED CORRECT:
Keith J. Walkowski
KEITH J. WALKOWSKI S-2717
Registered Land Surveyor
DATE: NOVEMBER 7TH, 2021

FIELD BOOK NO. NA PAGE NO. NA
COMPANY RIVERSIDE LAND SURVEYING LLC

TIE SKETCH:

- SET SNM-1 STEEL NAIL MARKER
- FOUND 3/4" IRON BAR
- EXISTING SIGN
- EXISTING UTILITY POLE
- FOUND VINYL POST



BEARINGS ARE BASED ON THE LANGLADE COUNTY COORDINATE SYSTEM NAD 83 (2011) AND REFERENCED AS SHOWN

THIS DRAWING IS NOT TO SCALE

L17
NO.

U.S. PUBLIC LAND SURVEY MONUMENT RECORD

Corner was: (check all that apply) **(Prepared and as required by S. A-E 7.08 Wf Administrative Code)**

4/31/13/15 2006

- Restored through acceptance of an obliterated evidence location
- Restored through acceptance of a found perpetuated location
- Determined to be lost and reestablished through proportionate methods. (Show bearings and distances to PLSS corners used for proportioning)
- Restored/recovered/reestablished in a location that differs from a previously established position. (Show difference in plan view below.)
- Check here if additional information is shown on the reverse side of this form

Describe record evidence, recovered physical evidence, occupational evidence, testimonial evidence and all other evidence considered in the recovery/restoration of corner.

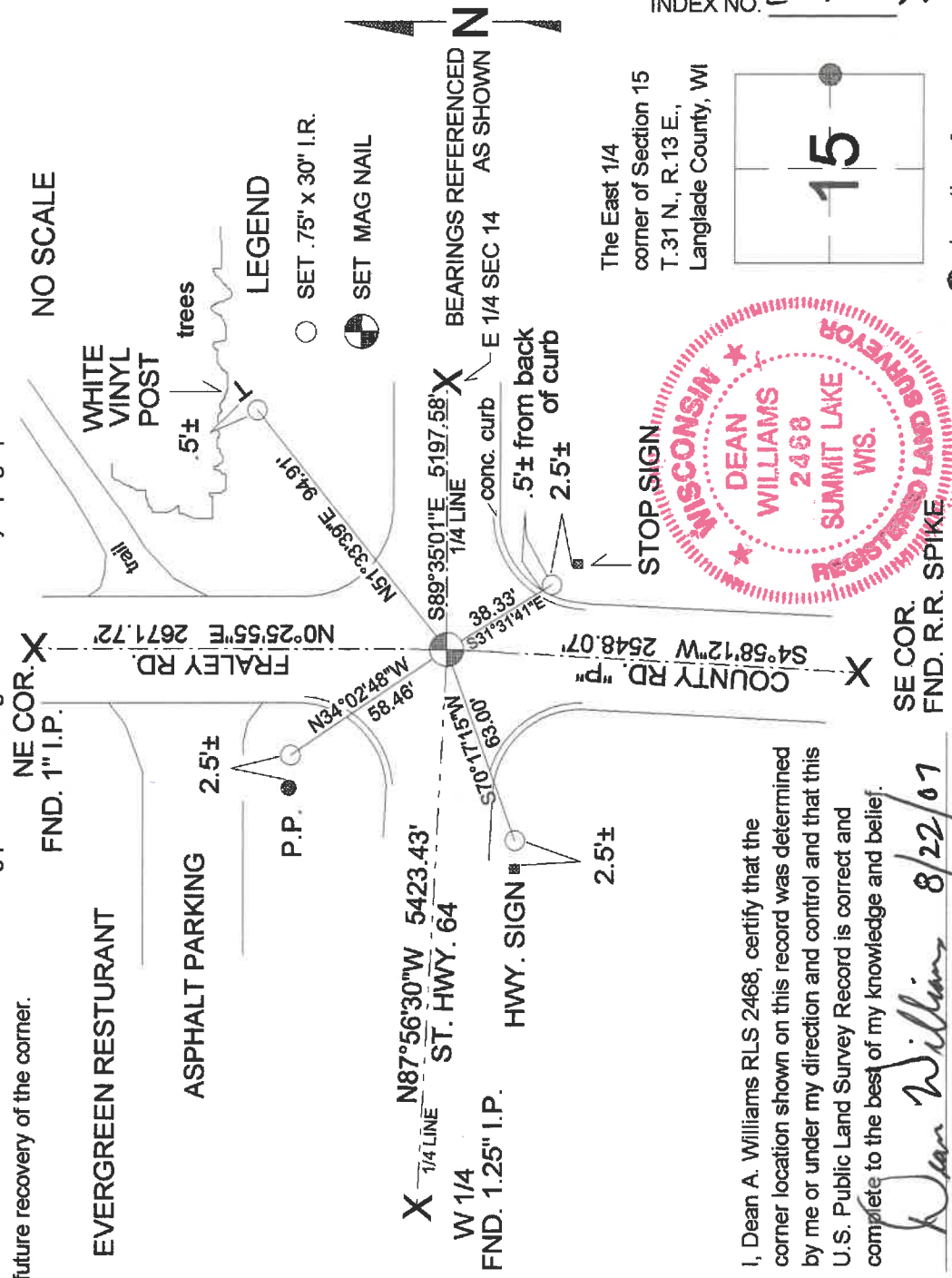
1857 - Original Corner established by James McBride
 Original BT: Lind, 14", S26°W, 36 lks.
 Original BT: Sugar, 14", S69°E, 22 lks.

1962? Reconstruction State Highway 64 set 4 ref. mon. ties to cor.
 1985-1986 Kelly: Due to Reconstruction again found pk, set R.R. Spike for cor. and retied the 4 existing ref. mon.'s

2006 - Dean A. Williams found nothing due to construction.
 Set corner from several survey maps spanning 15 years with ties to the 1/4 cor.'s 1 mile east and west and sec. cor.'s 1/2 mile north and south, accepted as best possible evidence of original corner location.
 Physical description of the monument set:

2006 - Dean A. Williams set MAG Nail for corner.
 Retied, and set .75" x 30" I.R.'s for witness monuments.

Describe the accessories used to perpetuate the location of the corner. Include a plan view drawing and indicate accessories found/set. Describe measuring point on bearing trees. Show any topographic features that would aid in future recovery of the corner.

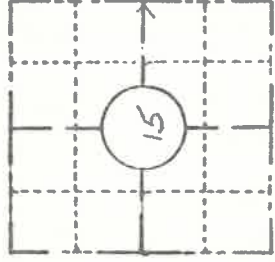


I, Dean A. Williams RLS 2468, certify that the corner location shown on this record was determined by me or under my direction and control and that this U.S. Public Land Survey Record is correct and complete to the best of my knowledge and belief.

Signature Dean Williams Date 8/22/07

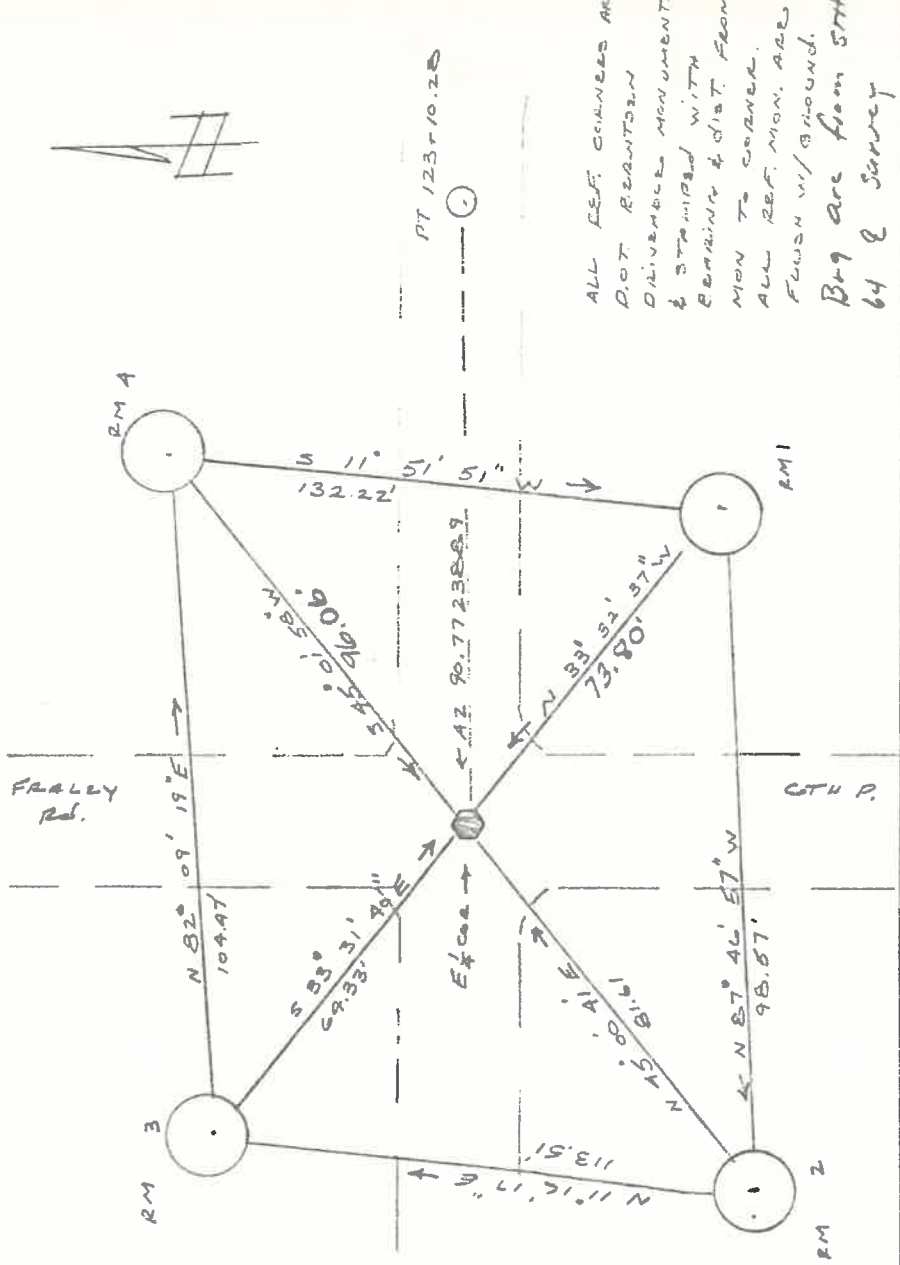
FIELD SURVEY NOT
PRESERVATION OF LANDMARKS
 (Pursuant to Section 59.635(7) Wisconsin Statutes
 E-D-707-69

COUNTY	Koshong		
TOWN	FARGO		
HIGHWAY	STH "64"		
SECTION	T 31 N.	RANGE	R 13 E
TYPE OF LANDMARK	R.P. SPIKE		
FROM INFORMATION BY BILL KELLY			



LOCATION SKETCH
 (Location of landmark indicated by "x")

This space for copy of field notes or ties to the above described landmarks



FILED UNDER PROJECT		COUNTY CLERK'S OFFICE	WISCONSIN
DISTRICT OFFICE	9140-01-71	COUNTY OF	OSAGE
NUMBER	03-07	DATE RECEIVED FOR RECORD	7-1-86
LOCATED OR ESTABLISHED BY	ROBERT B JOHNSON	SIGNATURE OF COUNTY CLERK	Robert B. Johnson
TITLE	SURVEY CREW CHIEF	DATE COPY SENT TO COUNTY SURVEYOR	7-1-86
Under the direct supervision of MICHAEL HESS		DATE RECEIVED FOR RECORD 7-1-86	
DATE 5-8-85		SIGNATURE OF COUNTY CLERK Robert B. Johnson	

PRESERVATION OF LANDMARKS

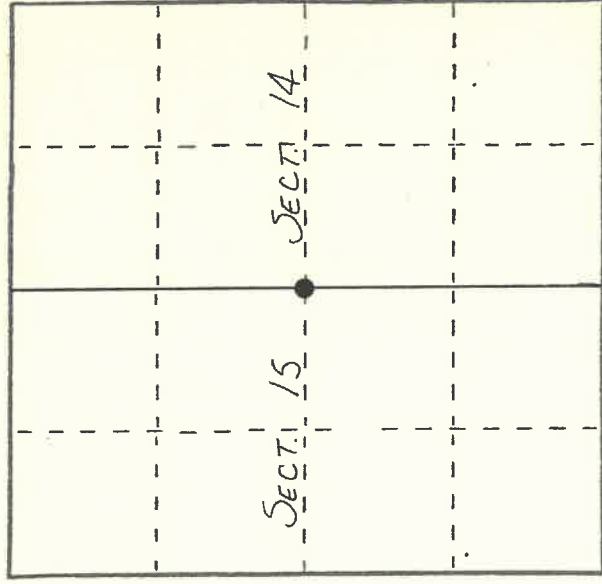
U. S. PUBLIC LAND SURVEY MONUMENT RECORD

I N S T R U C T I O N S :

This record shall show the location of the corner and shall include all of the following nine elements (a through i).

- (a) Identify the corner by reference to the U.S. public land survey system.
- = Corner monument restored.

CORNER ORIGINALLY ESTABLISHED
By JAMES McBRIDE in Nov., 1857.



T31N-R13E

- (b) Describe any record evidence, monument evidence, occupational evidence, testimonial evidence or any other material evidence you considered, and whether the monument was found or placed.

FOUND IN PLACE: LG. PK NAIL W/1/4 WITNESS
MONUMENTS (3" ALUMINUM CAPPED)
SET BY WI DEPT. OF TRANS.

REPLACED PK NAIL W/R.R. SPIKE.

New Witness Corners set due to
Road Construction 1985

- (c) In the plan view drawing below, provide reference ties to at least 4 witness monuments, or, if the location is within a municipality, to at least 2 witness monuments. (Witness monuments shall be made of concrete, natural stone, iron or other equally durable material.) Describe witness monuments.

- (d) Show a plan view drawing depicting the relevant monuments and reference ties which is sufficient in detail to enable accurate relocation of the corner monument if the corner monument is disturbed. Indicate north.

