

CERTIFIED LAND CORNER RESTORATION

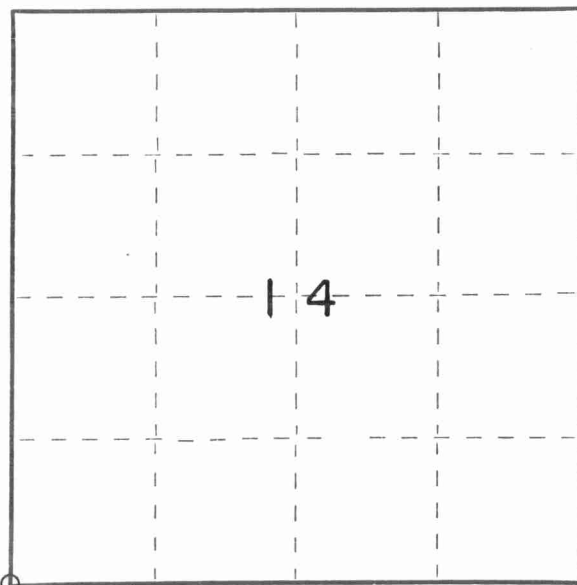
Index No. N-17

State of Wisconsin } ss.
County of Langlade

I David D. Eisele, do hereby certify that on the 3rd day of February, 1981, I found evidence of the Southwest corner of Section 14 Township 31, North, Range 13, Fourth Principal Meridian, as described hereon; and that from this evidence I established a new monument and accessories as described hereon to perpetuate the original location of this corner.

Resident witnesses:

Dan A. Bloedorn
Wayne F. Stabnaw
David D. Eisele

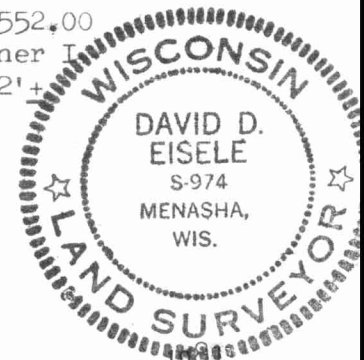
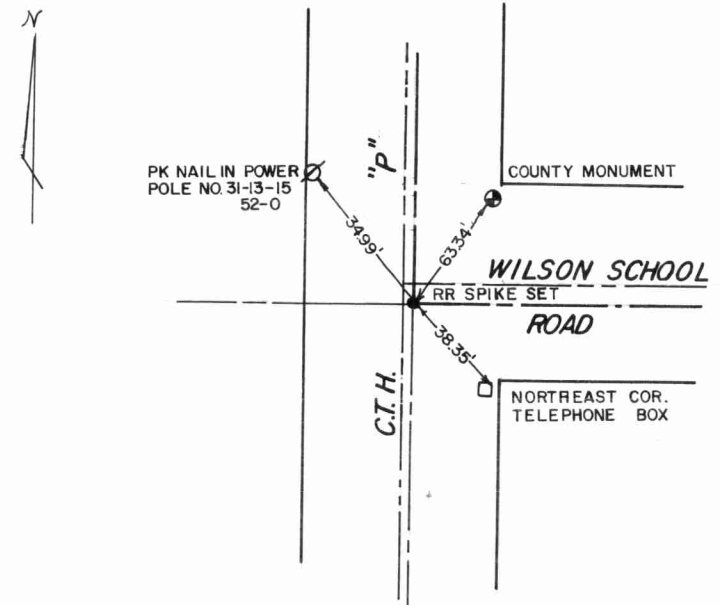


○ = Corner monument restored.

History of original corner establishment:
The only notes that were found were from 1857 and it calls a distance of 5313 feet from the Southeast corner

Description of corner evidence found:
There was no evidence found

Description of monument and accessories I established to perpetuate the original location of this corner. In 1927 the State Highway Department measured from the West 1/4 corner to the South 1276 feet to a fence line, (1/16 line) doubling this distance to 2552.00 feet from the W 1/4 corner and using 5313.00 feet from the Southeast corner I determined the location of this corner, said corner falls 6'± South and 2'± East of the centerline intersection.



Dated at Menasha, Wis., this 8th day of April, 1981

Signature _____ Title _____ Registration No. _____
(County Surveyor, Registered Land Surveyor, or other duly authorized official)

Office of Register of Deeds, County of _____, I hereby certify that the within instrument was filed in this office for record on the _____ day of _____, 19____ at _____ o'clock _____ M.

(Register of Deeds)

By _____ Deputy

