

CERTIFIED LAND CORNER RESTORATION

Index No. L-19

State of Wisconsin } ss.
County of Langlade

History of original corner establishment:
1913 M. Huthinson
1927 State Highway Department

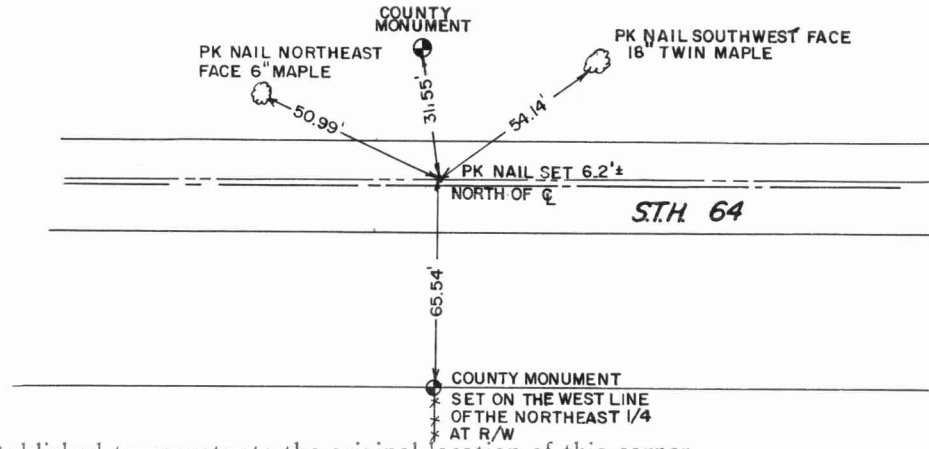
I David D. Eisele, do hereby certify that on the 3rd day of February, 1981, I found evidence of the Center 1/4 corner of Section 14 Township 31 North, Range 13 East, Fourth Principal Meridian, as described hereon; and that from this evidence I established a new monument and accessories as described hereon to perpetuate the original location of this corner.

Resident witnesses:

Dan A. Bloedorn
Wayne F. Stabnaw
David D. Eisele

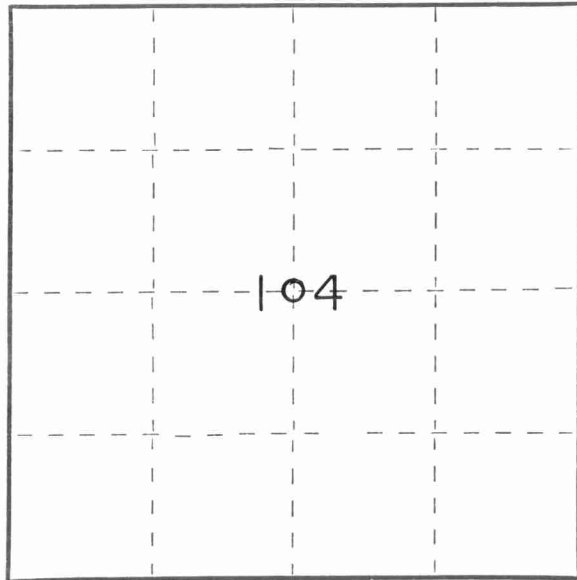
Description of corner evidence found:

- 1) Old Fenceline to South
- 2) State Hwy. plans for 1927 (Proj. # 7982) states that this corner falls 5.5 feet South of the Centerline of S.T.H. "64"



Description of monument and accessories I established to perpetuate the original location of this corner.

This corner was reset by using information taken from State Project #7982. The corner was set on a straight line between the East & West 1/4 corners and using a recorded distance of 2662.00 feet (1927 Highway plans) from the West 1/4 corner to center of section corner falls 6.2'± South of S.T.H. 64.



○ = Corner monument restored.



Dated at Menasha, Wis., this 8th day of April, 1981

Signature _____ Title _____
(County Surveyor, Registered Land Surveyor, or other duly authorized official)

Office of Register of Deeds, County of _____, I hereby certify that the within instrument was filed in this office for record on the _____ day of _____, 19____ at _____ o'clock _____ M.

(Register of Deeds)

By _____ Deputy

