

CERTIFIED LAND CORNER RESTORATION

Index No. L-20

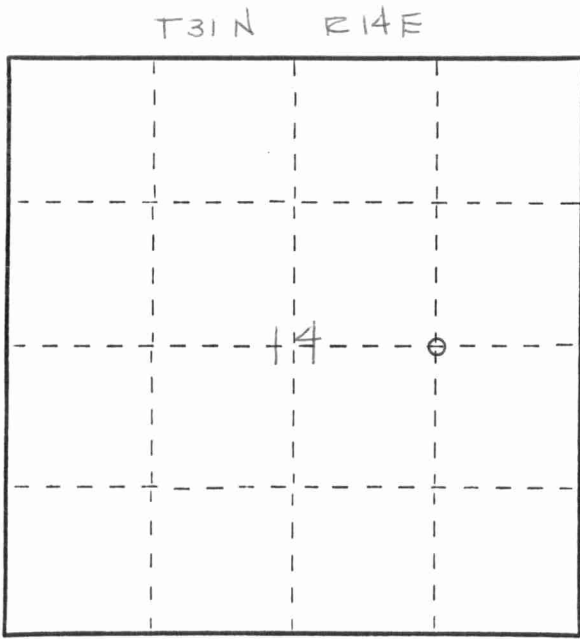
State of Wisconsin }  
 County of LANGLADE } ss.

I MARK A. STIBBE, do hereby certify that on the 24<sup>TH</sup> day of APRIL, 1902, I found evidence of the NORTHEAST corner of NW 1/4 - SE 1/4, SECTION 14 Township 31, North, Range 14 EAST, Fourth Principal Meridian, as described hereon; and that from this evidence I established a new monument and accessories as described hereon to perpetuate the original location of this corner.

Resident witnesses:

.....  
 .....  
 .....

FORM 985 H. C. MILLER CO., MILWAUKEE



○ = Corner monument restored.

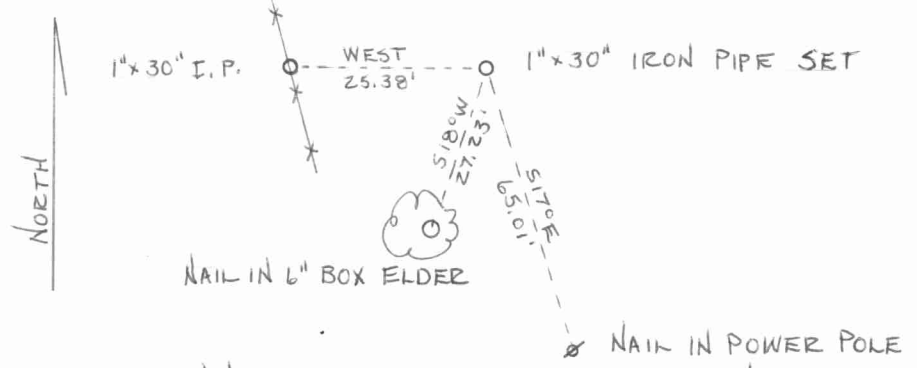
History of original corner establishment:

Description of corner evidence found:

FOUND NO EVIDENCE OF CORNER BEING PREVIOUSLY ESTABLISHED. SET CORNER ON LINE BETWEEN AND EQUIDISTANT FROM CENTER 1/4 CORNER AND EAST 1/4 CORNER.



Description of monument and accessories I established to perpetuate the original location of this corner.



Dated at ANTIGO, Wis., this 22<sup>ND</sup> day of MAY, 1902

Signature Mark A. Stibbe Title REGISTERED LAND SURVEYOR Registration No. 1539  
 (County Surveyor, Registered Land Surveyor, or other duly authorized official)

Office of Register of Deeds, County of....., I hereby certify that the within instrument was filed in this office for record on the..... day of....., 19..... at..... o'clock..... M.

.....  
 (Register of Deeds)

By..... Deputy



1912