

CERTIFIED LAND CORNER RESTORATION

Index No. L-20

State of Wisconsin }  
 County of ..... } ss.

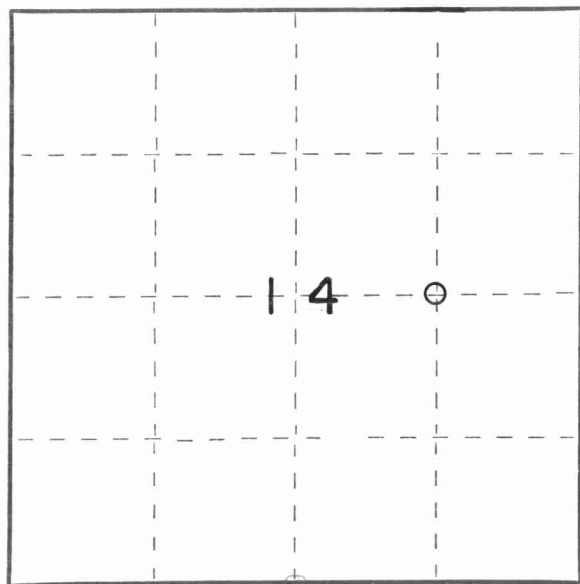
I, David D. Eisele, do hereby certify that on the 3rd day of February, 1981, I found evidence of the NW of the NE of the SE corner of Section 14 Township 31, North, Range 13 East, Fourth Principal Meridian, as described hereon; and that from this evidence I established a new monument and accessories as described hereon to perpetuate the original location of this corner.

Resident witnesses:

Dan A. Bloedorn

Wayne F. Stabnaw

Dave D. Eisele



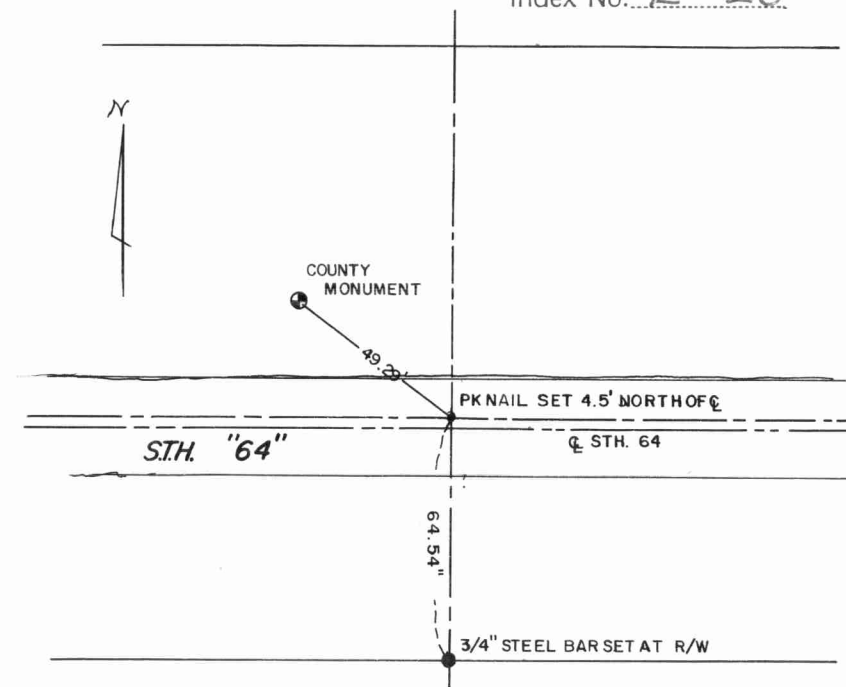
○ = Corner monument restored.

History of original corner establishment:  
 1913 M. Hutchison  
 1927 State Highway Dept. Proj. #7982

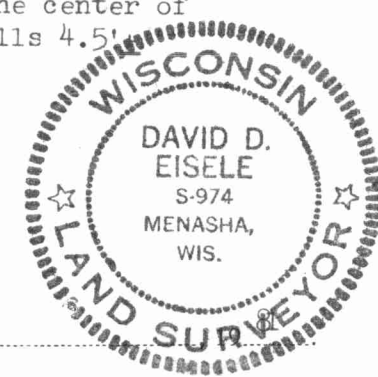
Description of corner evidence found:

Fenceline South

State Hwy Plans state that this corner is 4.5 feet South of the center line



Description of monument and accessories I established to perpetuate the original location of this corner. This corner was re-established by using a straight line between the center of Section & the East 1/4 corner, and a distance of 1341.00 feet from the center of Section to the East as taken from the 1927 Hwy Proj. said corner falls 4.5' North of the center line of S. T. H. "64"



Dated at Menasha, Wis., this 8th day of April

Signature..... Title..... Registration No.....  
 (County Surveyor, Registered Land Surveyor, or other duly authorized official)

Office of Register of Deeds, County of....., I hereby certify that the within instrument was filed in this office for record on the..... day of....., 19..... at..... o'clock..... M.

(Register of Deeds)

By..... Deputy

