

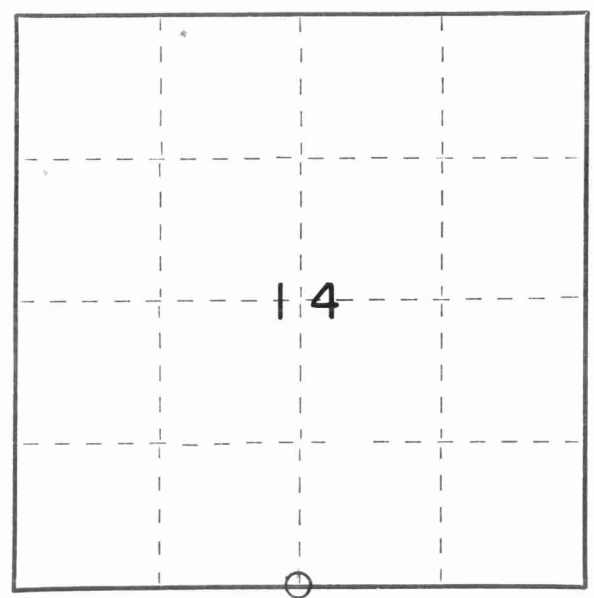
CERTIFIED LAND CORNER RESTORATION

Index No. N-19

State of Wisconsin }
 County of Langlade } ss.

I David D. Eisele, do hereby certify that on the 4th day of February, 1981, I found evidence of the South 1/4 corner of Section 14 Township 31, North, Range 13, Fourth Principal Meridian, as described hereon; and that from this evidence I established a new monument and accessories as described hereon to perpetuate the original location of this corner.

Resident witnesses:
Dan A. Bloedorn
Wayne F. Stabnaw
David D. Eisele



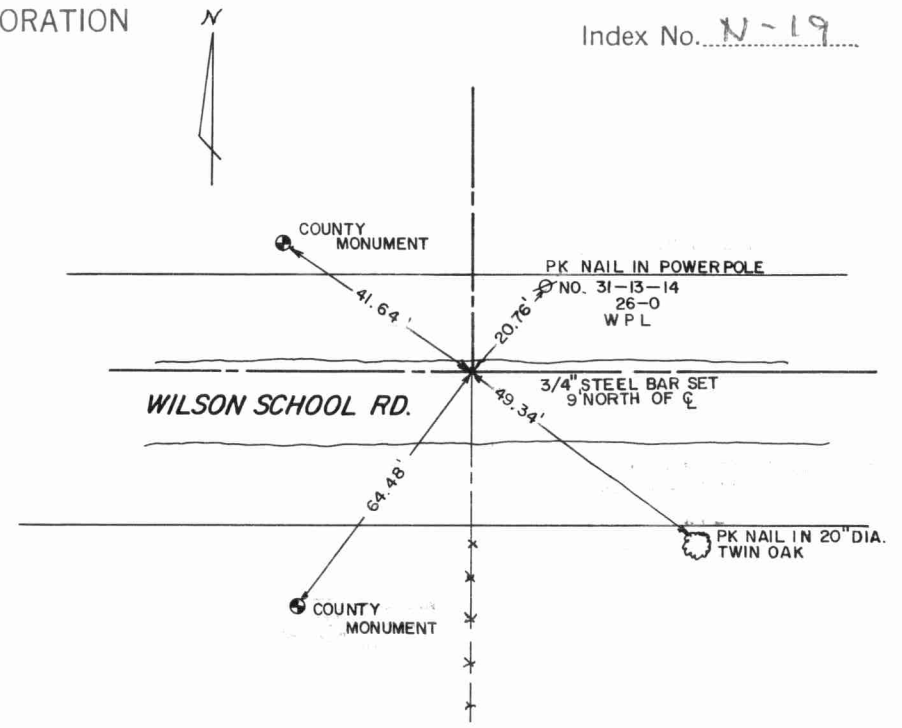
○ = Corner monument restored.

History of original corner establishment:
 Notes from year 1857 in the Langlade County Court House states that the distance from the Southeast corner to the South 1/4 corner is 40.25 chains = 2656.50 feet

Description of corner evidence found:
 Using the distance of 2656.50 feet the corner fits an existing fence line to the South

Description of monument and accessories I established to perpetuate the original location of this corner.

Corner was set on a straight line between Southwest and Southeast corner 2656.50 feet West of the Southeast corner



Dated at Menasha, Wis., this 8th day of April, 1981

Signature _____ Title _____ Registration No. _____
 (County Surveyor, Registered Land Surveyor, or other duly authorized official)

Office of Register of Deeds, County of _____, I hereby certify that the within instrument was filed in this office for record on the _____ day of _____, 1981 at _____ o'clock _____ M.

 (Register of Deeds)
 By _____ Deputy

FORM 985 H. C. MILLER CO., MILWAUKEE

