

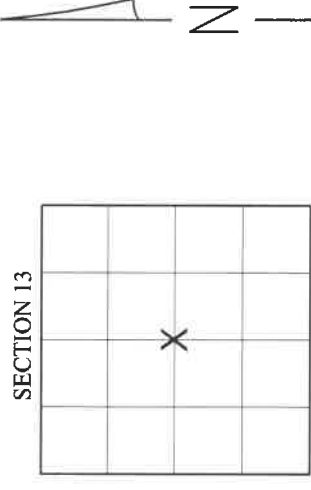
# LANGLADE COUNTY U.S. PUBLIC LAND SURVEY MONUMENT LOCATION RECORD

4311313 2020

SECTION 13  
TOWNSHIP 31 N  
RANGE 13 E  
EVERGREEN  
CITY, VILLAGE, TOWN

**L23**  
NO.

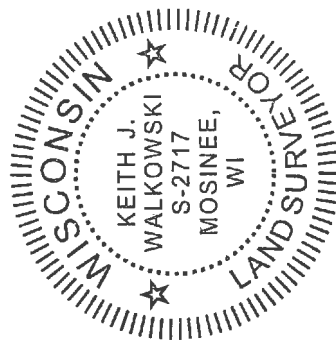
LANDMARK  BENCHMARK  
CORNER IDENTITY: SNM-1 STEEL NAIL MARKER  
LANGLADE COUNTY COORDINATE: N: 350478.712  
E: 707346.070  
ELEVATION (FEET): \_\_\_\_\_ DATUM: \_\_\_\_\_  
WEATHER: SUNNY  
DATE OF SURVEY: 7/26/2021 TEMPERATURE: 84 °F  
SURVEY PARTY: CHRISTOPHER FIERI / COLLIN MARQUARDT



## BASIS FOR MONUMENT LOCATION:

(DESCRIBE METHOD OF SURVEY AND CORNER AUTHENTICATION)

SEARCHED FOR THE CENTER 1/4 CORNER OF SECTION 13 AND FOUND A SMP NAIL AND TWO TIES IN POOR CONDITION FROM THE 1980 TIESHEET BY FREDERIC COPP. THE TWO EXISTING TIES ARE 4X4 CONCRETE MONUMENTS ARE HEAVED AND LEANING. THE FOUND SMP NAIL MATCHED THE TWO EXISTING TIES WITHIN REASON AND WAS HELD FOR THE CORNER LOCATION. SET A SNM-1 STEEL NAIL MARKER AT THE CORNER LOCATION UPON COMPLETION OF THE S.T.H. "64" RESURFACING PROJECT AND SET FOUR NEW TIES TO PERPETUATE THE CORNER LOCATION AS SHOWN BELOW.

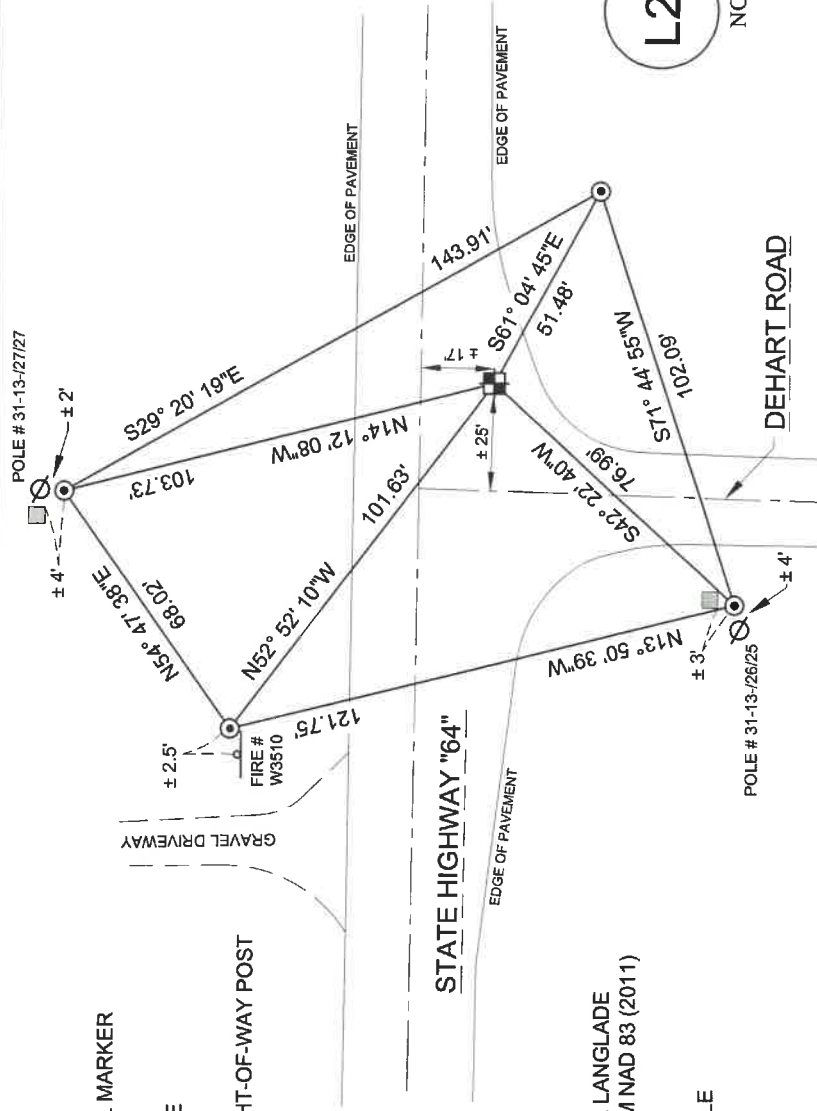


CERTIFIED CORRECT:  
*Keith J. Walkowski*  
KEITH J. WALKOWSKI S-2717  
Registered Land Surveyor  
DATE: NOVEMBER 7TH, 2021

FIELD BOOK NO. NA PAGE NO. NA  
COMPANY RIVERSIDE LAND SURVEYING LLC

## TIE SKETCH:

- SET SNM-1 STEEL NAIL MARKER
- SET 3/4" IRON BAR
- EXISTING UTILITY POLE
- EXISTING SIGN
- 4" x 4" CONCRETE RIGHT-OF-WAY POST



BEARINGS ARE BASED ON THE LANGLADE COUNTY COORDINATE SYSTEM NAD 83 (2011) AND REFERENCED AS SHOWN

THIS DRAWING IS NOT TO SCALE

**L23**  
NO.

4311313 2020 2013

# U.S. PUBLIC LAND SURVEY MONUMENT RECORD

(Prepared and as required by S. A-E 7.08 WI Administrative Code)

The CENTER 1/4 corner of Section 13 T. 31 N., R. 13 E., Langlade County, WI  
 Corner was (check all that apply)

- Restored through acceptance of an obliterated evidence location.
- Restored through acceptance of a found perpetuated location.
- Determined to be lost and re-established through proportionate methods. (show bearings and distances to PLSS corners used for proportioning.)
- Restored/recovered/re-established in a location that differs from a previously established position. (Show difference in plan view below.)
- Check here if additional information is shown on the reverse side of this form.

**Describe record evidence, recovered physical evidence, occupational evidence, testimonial evidence, and all other evidence considered in the recovery/restoration of the corner.**

**THIS CORNER WAS NOT SET AS PART OF THE ORIGINAL GOVERNMENT SURVEY.**

1980 - Surveyor Copp set a 3/4" iron rod at Center 1/4 corner location based on partial section subdivision as shown on Map #30406 of Langlade County records. Copp filed a tie sheet and referenced two ties to corner, "4" Conc. R.O.W. Post, S40°W, 74.95' and "4" Conc. R.O.W. Post, N16°W, 108.22'."

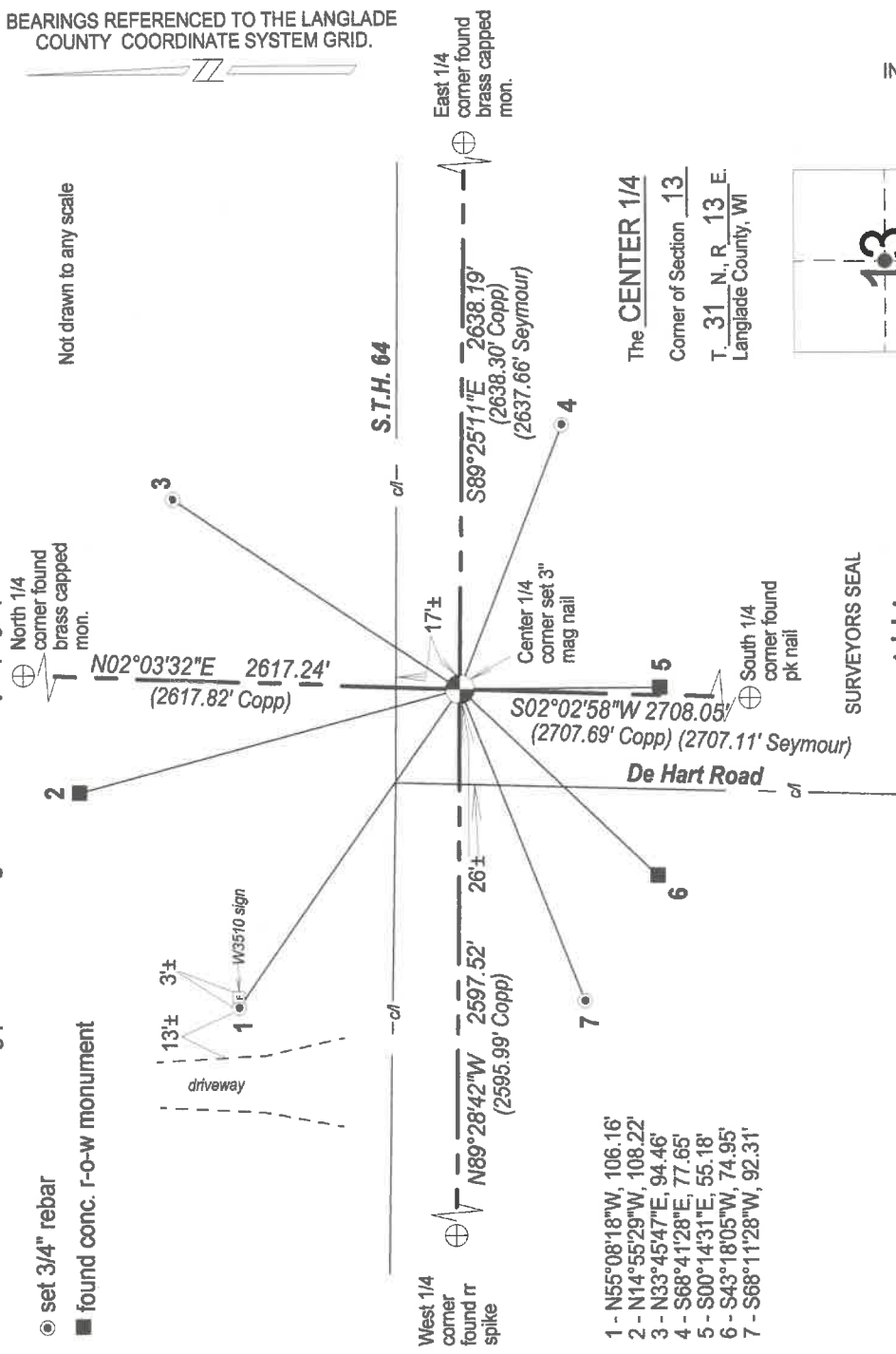
1991 - Surveyor Seymour working in the SE 1/4 of Section 13, set a PK nail at corner location using ties set by Copp.

2013 - I found the two R.O.W. monuments referenced by Copp at the Center 1/4 corner location. I reset Center 1/4 corner from said ties. Corner location lies approximately 17' south of the centerline of Highway "64" and 26' east of the centerline of De Hart Road.

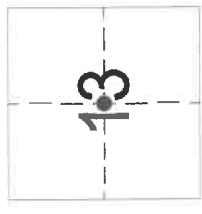
**Physical description of the monument set:**

2013 - I set a 3" Mag Nail at the corner location and tied it out as follows.

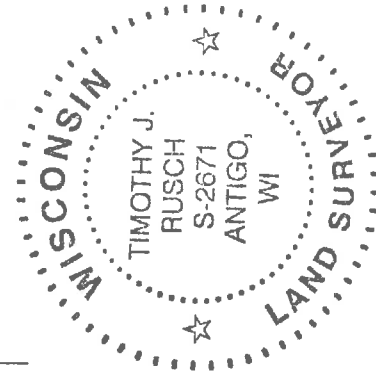
Describe the accessories used to perpetuate the location of the corner. Include a plan view drawing and indicate accessories found/set. Describe measuring point on bearing trees. Show any topographic features that would aid in future recovery of the corner.



The CENTER 1/4  
 Corner of Section 13  
 T. 31 N., R. 13 E.  
 Langlade County, WI



INDEX No. **L23** (31-13)



I, Timothy J. Rusch certify that the corner location shown on this record was determined by me or under my direction and control and that this U.S. Public Land Survey Monument Record is correct and complete to the best of my knowledge and belief.

Timothy J. Rusch 11-12-2013  
 Signature Date

● = Location of corner

CERTIFIED LAND CORNER RESTORATION

Index No. L23

State of Wisconsin } ss.  
County of.....

I....., do hereby certify that on the.....day of....., 19....., I found evidence of the.....corner of.....Township....., North, Range....., Fourth Principal Meridian, as described hereon; and that from this evidence I established a new monument and accessories as described hereon to perpetuate the original location of this corner.

Resident witnesses:

.....  
.....  
.....

~~History of original corner establishment:~~

I. F.H. Copp R.L.S.-799 do hereby certify that in the partial subdivision of Section 13, T31N, R13E, the following corners were set.

- (1)...Set 1 1/4" O.D. Iron Pipe, BTs Cedar 5" N60°E 13.28', Cedar 6" N40°W 13.22'
  - (2)...Set 3/4" Iron Rod 5.0' South of centerline S.T.H."64" BTs 4"X4" Concrete Post N16°W 108.22' 4"X4" Concrete Post S40°W 74.95'
  - \* (3)...Set 1 1/4" O.D. Iron Pipe, BTs Cedar 9" N09°E 2.85', Cedar 6" N85°W 20.65'
  - (4)...Set 1 1/4" Iron Pipe in Creek, BTs Cedar 6" N35°E 27.88', Cedar 14" S06°E 28.75'
  - ~~XY Description of corner evidence found X~~
  - (5)...Set 3/4" Iron Rod 7.50' South of centerline S.T.H."64" BTs 4"X4" Concrete Post S24°W 59.00', 4"X4" Concrete Post N12°W 109.30'
  - (6)...Set 1 1/4" O.D. Iron Pipe near centerline of Townline Road BTs Willow 10" N30°E 48.25' (south of three) Tamarack 18" S50°E 47.90' (pipe is 2" below surface of the road.
  - (7)...Set 1 1/4" O.D. Iron Pipe in low spot BTs A.B. 6" S47°W 36.85', Elm 7" N66°W 19.00'.
- \* Monument is 50'+ North of the Evergreen River.

~~Description of monument and accessories established to perpetuate the original location of this corner X~~



Norbert L. Viessera	Crew Chief
Kenneth V. Freund	Assistant
Georg Krywka Jr.	Assistant
William Krochmaliski	Assistant

Dated at Boulder Junction....., Wis., this 4th.....day of September....., 1980.....

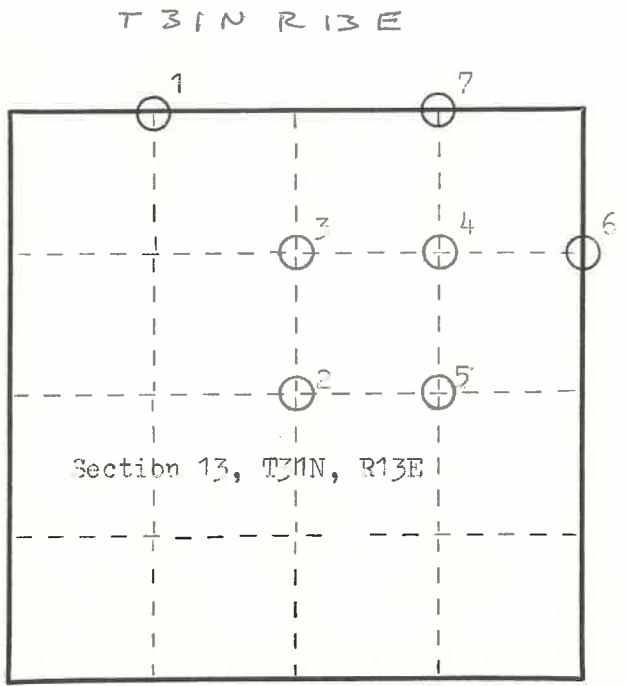
Signature F.H. Copp Title Registered Land Surveyor Registration No. S-799  
(County Surveyor, Registered Land Surveyor, or other duly authorized official)

Office of Register of Deeds, County of....., I hereby certify that the within instrument was filed in this office for record on the.....day of....., 19..... at.....o'clock..... M.

(Register of Deeds)

By.....Deputy

FORM 985 R. C. MILLER CO., MILWAUKEE



○ = Corner monument restored.