

CERTIFIED LAND CORNER RESTORATION

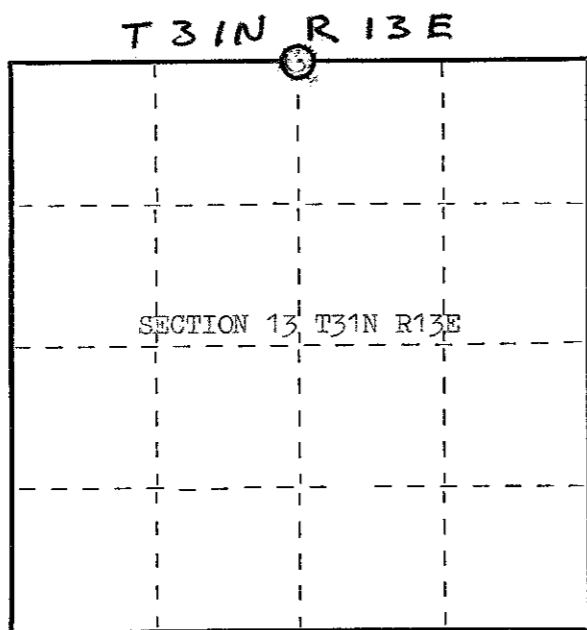
Index No. J-23

State of Wisconsin }  
County of VILAS } ss.

I F.H. COPP, RLS-799, do hereby certify that on the 7th day of JULY, 1980, I found evidence of the Set the N1/4 corner of Section 13 Township 31, North, Range 13 East, Fourth Principal Meridian, as described hereon; and that ~~from this evidence~~ I established a new monument and accessories as described hereon ~~to perpetuate the original location of this corner.~~ by proportion.

Resident witnesses:

.....  
.....  
.....



○ = Corner monument restored.

History of original corner establishment:

Orig. BTs. Sugar Maple 6" S05°W 15 lks  
Sugar Maple 10" N43°W 21 lks

Description of corner evidence found:

Found no evidence of monuments or accessories.

Description of monument and accessories I established to perpetuate the original location of this corner.

Set 2" Langlade Co. type Brass Cap, 2618.40' East of NW Cor. & 2618.40' West of NE Cor.

BTs. FB 5" S11°E 16.45'  
Asp. 8" N12°W 10.35'  
Asp. 9" N82°E 9.50' (slope dist. to mon. 16" above ground.)  
(corner falls 55'+ south of East West woods road.)

Norbert L. Vissers Crew Chief  
Gerald Kryka Jr. Assistant

Dated at Boulder Junction, Wis., this 3rd day of September, 1980

Signature F.H. Copp Title Registered Land Surveyor Registration No. 8-799  
(County Surveyor, Registered Land Surveyor, or other duly authorized official)

Office of Register of Deeds, County of \_\_\_\_\_, I hereby certify that the within instrument was filed in this office for record on the \_\_\_\_\_ day of \_\_\_\_\_, 19\_\_\_\_ at \_\_\_\_\_ o'clock \_\_\_\_\_ M.

.....  
(Register of Deeds)

By \_\_\_\_\_ Deputy



FORM 985 H. C. MILLER CO., MILWAUKEE