

# U.S. PUBLIC LAND SURVEY MONUMENT RECORD

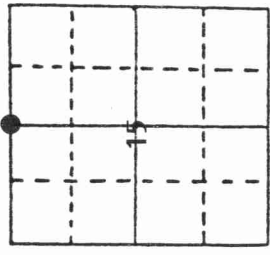
Note: This form is intended and designed to fulfill all requirements of Wisconsin Administrative Code, Chapter A-E 5.02, U.S. Public Land Survey Monument Record (3) (a) (b) (c) (d) (e) (f) (g) (h) (i). An additional sheet may be added if necessary to conform with said requirements.

(a) Corner location: Township 31 North

Range 13 East

Town/City/Village TOWN OF EVERGREEN

County LANGLADE



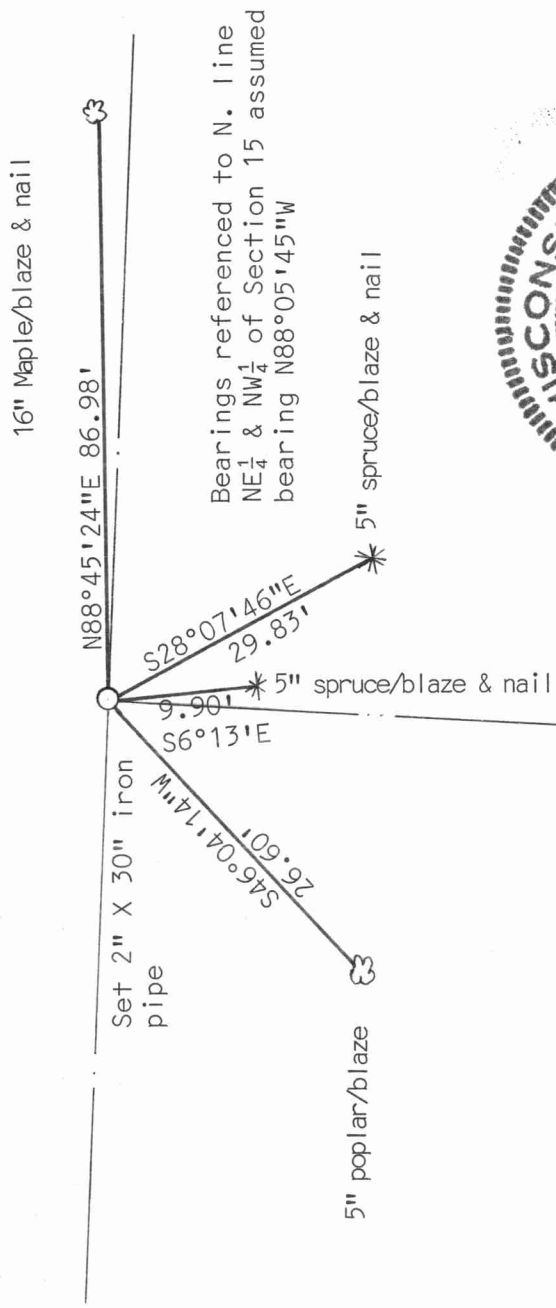
Section 15

(b) (f) (g) (h) Description of monument found at this corner and if it was accepted, state all evidence (material, testimonial, occupational, plats, records, other monuments) used as a basis for accepting. If not accepted or if nothing was found, state evidence used as basis for establishing location. If reestablished through lost corner proportionate methods, indicate all monuments, distances and directions used to establish.

ESTABLISHED CORNER LOCATION BY SINGLE PROPORTIONATE MEASUREMENT (ON LINE & EQUI-DISTANT BETWEEN NE & NW SECTION CORNERS). CORNER LOCATION FELL ON PAINTED & BLAZED LINE PRESUMED TO HAVE BEEN SET BY FORESTERS FOR LOGGING OPERATION. DID NOT FIND ANY EVIDENCE OF SECTION CORNER. ALSO RAN TO SOUTH 1/4 CORNER TO ESTABLISH NORTH SOUTH 1/4 SECTION LINE. SET 2" X 30" IRON PIPE AND SET SEVERAL TIES AS SHOWN.

(See MAP #10454)  
D.T.

(c) (d) (e) Plan view of corner with ties to at least 4 witness monuments. If in disagreement with previously established corner, show the distances between the two corners and also indicate the ties to the disputed corner.



(i) I, Edwin R. Abendroth

(type or print name) certify that the corner location on this record was determined by me or under my direction and control and that this U.S. Public Land Survey Monument Record is correct and complete to the best of my knowledge and belief.

Edwin R. Abendroth

August 23, 1996

Signature

Date



Index No. J15

