

4311236 0000

# U.S. PUBLIC LAND SURVEY MONUMENT RECORD

**HISTORY OF ORIGINAL CORNER ESTABLISHMENT AND SUBSEQUENT RESTORATION AND DESCRIPTION OF ANY RECORD, MONUMENT OCCUPATIONAL, TESTIMONIAL OR OTHER EVIDENCE CONSIDERED:**

THE ORIGINAL CORNER WAS SET BY McBRIDE IN 1851 WITH THE ORIGINAL BEARING TREES OF:

- 10" MAPLE - N58°W 33 LINKS
- 9" MAPLE - N35°E 7 LINKS
- 8" HEMLOCK - N5°W 8 LINKS
- 16" HEMLOCK - N17°W 35 LINKS

1933 - GLO SET A BRASS CAP IN A 6" CONCRETE POST THEY MARKED BEARING TREES OF:

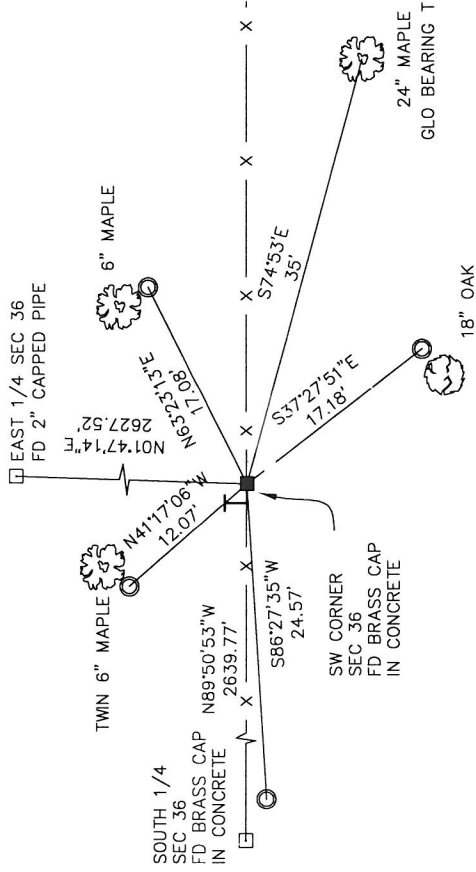
- 16" MAPLE S73.5°E, 53 LINKS
- 12" MAPLE N82.5°E 145 LINKS
- 18" OAK N27.5°W 272 LINKS

I FOUND THE 16" MAPLE FROM THE GLO SURVEY AND ALSO FOUND THE BRASS DISK IN CONCRETE AND ADDED ADDITIONAL TIES

**CORNER WAS: (CHECK ALL THAT APPLY)**

- RESTORED THROUGH ACCEPTANCE OF AN OBLITERATED EVIDENCE LOCATION
- RESTORED THROUGH ACCEPTANCE OF A FOUND PERPETUATED LOCATION
- CONSIDERED A LOST CORNER AND REESTABLISHED THROUGH LOST CORNER PROPORTIONATE METHODS (INCLUDE A PLAN VIEW DRAWING SHOWING DISTANCES AND DIRECTIONS TO OTHER PUBLIC LAND SURVEY CORNERS USED FOR PROPORTIONING AND DETERMINING THE CORNER LOCATION)
- RESTORED OR REESTABLISHED IN A LOCATION THAT DIFFERS FROM A PREVIOUS RESTORATION OR REESTABLISHMENT (INCLUDE A PLAN VIEW DRAWING AND INDICATE WHAT WAS SET AND/OR FOUND)
- CHECK IF THERE IS ADDITIONAL INFORMATION ON BACK

DESCRIBE THE MONUMENT AND ACCESSORIES USED TO PERPETUATE THE LOCATION OF THE CORNER (INCLUDE A PLAN VIEW DRAWING AND INDICATE WHAT WAS SET AND/OR FOUND) ALSO INCLUDE FOUR TIES TO THE SECTION CORNER AND DESCRIPTION OF THE TIES.



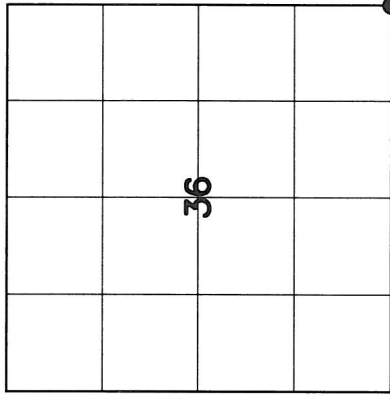
SET 3/4"x 24" IRON PIPES AT ALL TIE LOCATIONS

BEARINGS REFERENCED TO THE LANDGLADE COUNTY COORDINATE SYSTEM

T - SET 6' WHITE T-POST



● = LOCATION OF CORNER



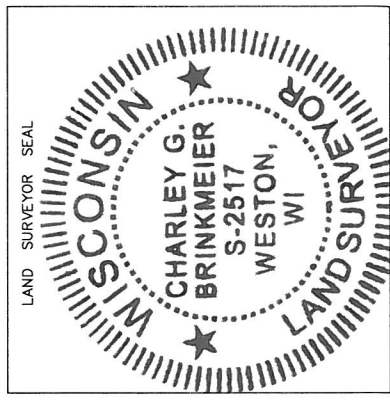
SECTION 36  
 TOWNSHIP 31 NORTH, RANGE 12 EAST  
 TOWN OF POLAR  
 LANGLADE COUNTY, WISCONSIN

**CHARLEY G. BRINKMEIER**

I, (Type or print name) CERTIFY THAT THE CORNER LOCATION SHOWN ON THIS RECORD WAS DETERMINED BY ME OR UNDER MY DIRECTION AND CONTROL AND THAT THIS U.S. PUBLIC LAND SURVEY MONUMENT RECORD IS CORRECT AND COMPLETE TO THE BEST OF MY KNOWLEDGE AND BELIEF.

SIGNATURE

DATE 3-12-12



225 31-12  
 INDEX NO.