

U.S. PUBLIC LAND SURVEY MONUMENT RECORD

(Prepared and as required by S. A-E 7.08 WI Administrative Code)

The CENTER 1/4 corner of Section 35, T. 31 N., R. 12 E., Langlade County, WI
 Corner was (check all that apply)

- Restored through acceptance of an obliterated evidence location.
- Restored through acceptance of a found perpetuated location.
- Determined to be lost and re-established through proportionate methods. (show bearings and distances to PLSS corners used for proportioning.)
- Restored/recovered/re-established in a location that differs from a previously established position. (Show difference in plan view below.)
- Check here if additional information is shown on the reverse side of this form.

Describe record evidence, recovered physical evidence, occupational evidence, testimonial evidence, and all other evidence considered in the recovery/restoration of the corner.

Corner not set as part of original survey.

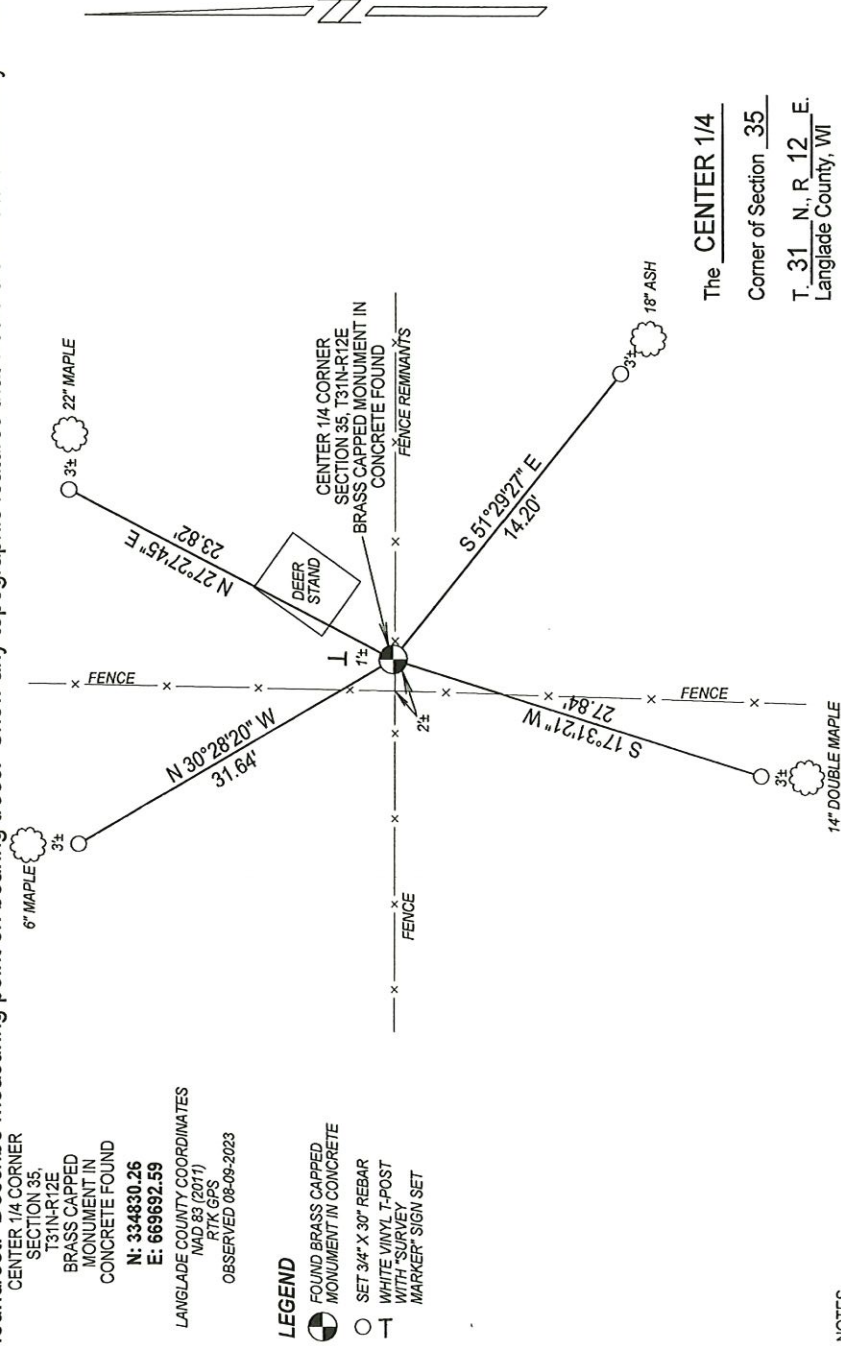
1976 - Gary Radtke found old fence from four directions. Radtke set a brass capped monument in concrete at the corner, made ties and filed a tie sheet.

2023 - I found the existing brass capped monument in concrete set by Dobbratz. Corner was leaning, I straightened monument and set in rock mound. I accept brass capped monument in concrete as the corner location.

Physical description of the monument set:

Accepted the brass capped monument in concrete as corner location and tied out as shown below.

Describe the accessories used to perpetuate the location of the corner. Include a plan view drawing and indicate accessories found/set. Describe measuring point on bearing trees. Show any topographic features that would aid in future recovery of the corner.



LANGLADE COUNTY COORDINATES
 NAD 83 (2011)
 RTK GPS
 OBSERVED 08-09-2023

LEGEND

- FOUND BRASS CAPPED MONUMENT IN CONCRETE
- SET 3/4" X 30" REBAR
- WHITE VINYL T-POST WITH SURVEY MARKER SIGN SET

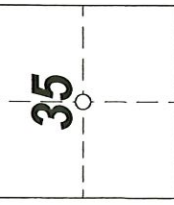
NOTES
 - SKETCH NOT DRAWN TO SCALE
 - TIE BEARINGS SHOWN ARE LANGLADE COUNTY GRID BEARINGS.
 - ALL TIES MEASURED ELECTRONICALLY WITH TOTAL STATION.

SURVEYORS SEAL



I, Michael J. Hoffman, certify that the corner location shown on this record was determined by me or under my direction and control and that this U.S. Public Land Survey Monument Record is correct and complete to the best of my knowledge and belief.

Michael J. Hoffman Signature 09-12-2023 Date



○ = Location of corner

CERTIFIED LAND CORNER RESTORATION

Index No. X-19

State of Wisconsin }
County of Lanlade } ss.

History of original corner establishment:

BTs that are no longer present because of logging in recent years.

I, Gary A. Radtke, do hereby certify that on the 11th day of November, 1976, I found ~~evidence of the established~~ **the center of** Sec 35

~~corners of~~
Township 31, North, Range 12 East, Fourth Principal Meridian, as described hereon; and that from this evidence I established a new monument and accessories as described hereon to perpetuate the original location of this corner.

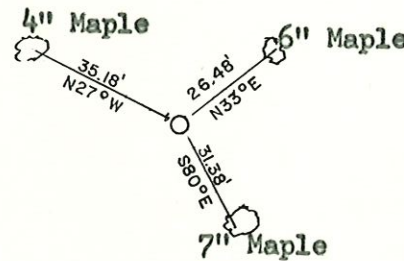
Description of corner evidence found:

Old fences come from four directions and meet in this area.

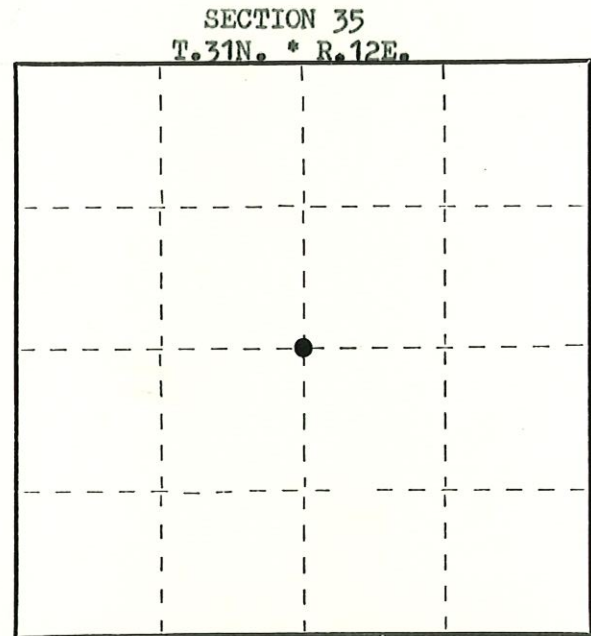
Resident witnesses:

.....
.....
.....

Description of monument and accessories I established to perpetuate the original location of this corner.



**Brass Cap set in cement mounment.
T.31N. - R.12E.
Center of Section 35
G.A.R.**



Dated at ANTIGO, Wis., this 10th day of December, 1976.

Signature Gary A. Radtke Title Reg. Land Surveyor Registration No. S-1248
(County Surveyor, Registered Land Surveyor, or other duly authorized official)

Office of Register of Deeds, County of, I hereby certify that the within instrument was filed in this office for record on the day of, 19..... at o'clock M.

.....
(Register of Deeds)

By..... Deputy

○ = Corner monument restored.

FORM 985 H. C. MILLER CO., MILWAUKEE