

CERTIFIED LAND CORNER RESTORATION

Index No. X-17

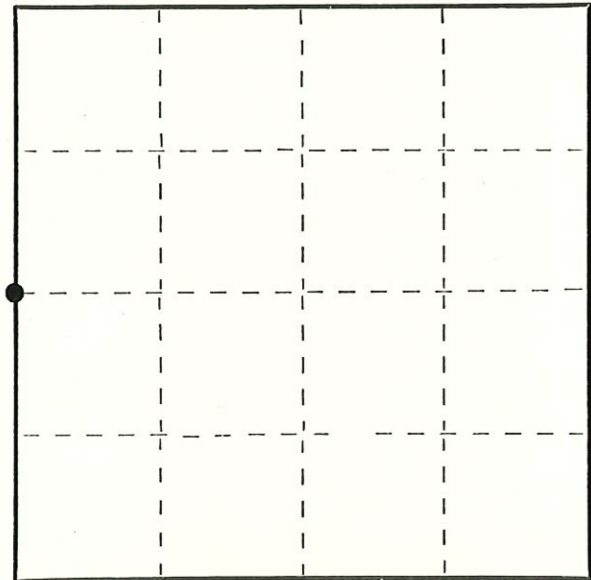
State of Wisconsin }
County of Lanlade } ss.

I, Gary A. Radtke, do hereby certify that on the 11th day of November, 19 76, I found evidence of the established the W. 1/4 corner of Section 35 Township 31, North, Range 12 East, Fourth Principal Meridian, as described hereon; and that from this evidence I established a new monument and accessories as described hereon to perpetuate the original location of this corner.

Resident witnesses:

.....
.....
.....

SECTION 35
T.31N. - R.12E.



○ = Corner monument restored.

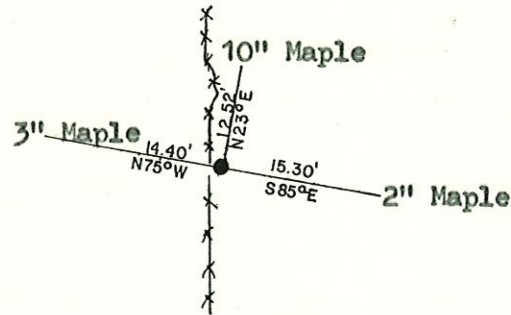
History of original corner establishment:

None

Description of corner evidence found:

None

Description of monument and accessories I established to perpetuate the original location of this corner.



(Brass Cap set in cement monument.)

T.31N. * R.12E.
W. 1/4
G.A.R.
Section 35

Dated at ANTIGO, Wis., this 10th day of December, 19 76.

Signature Gary A. Radtke Title _____ Registration No. _____
(County Surveyor, Registered Land Surveyor, or other duly authorized official)

Office of Register of Deeds, County of _____, I hereby certify that the within instrument was filed in this office for record on the _____ day of _____, 19 _____ at _____ o'clock _____ M.

(Register of Deeds)

By _____ Deputy