

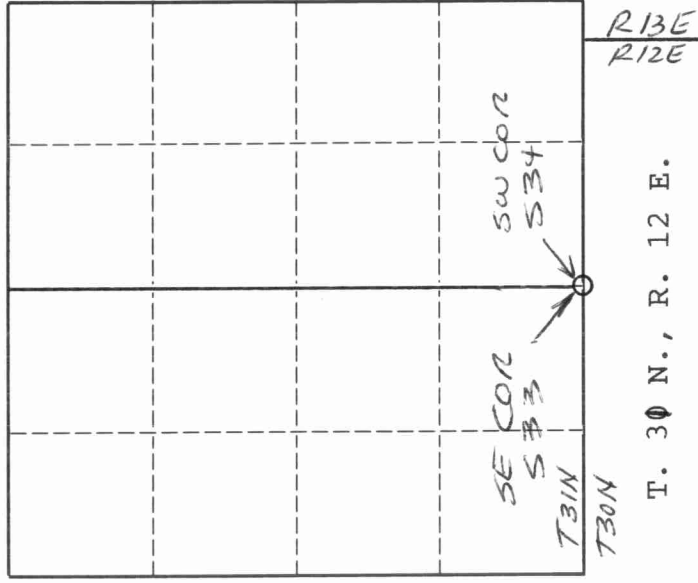
U. S. PUBLIC LAND SURVEY MONUMENT RECORD

I N S T R U C T I O N S:

This record shall show the location of the corner and shall include all of the following nine elements (a through i).

- (a) Identify the corner by reference to the U.S. public land survey system.
 O = Corner monument restored.

The Southwest corner of Section 34, Township 31 North, Range 12 East, Langlade County, Wisconsin.



T. 30 N., R. 12 E.

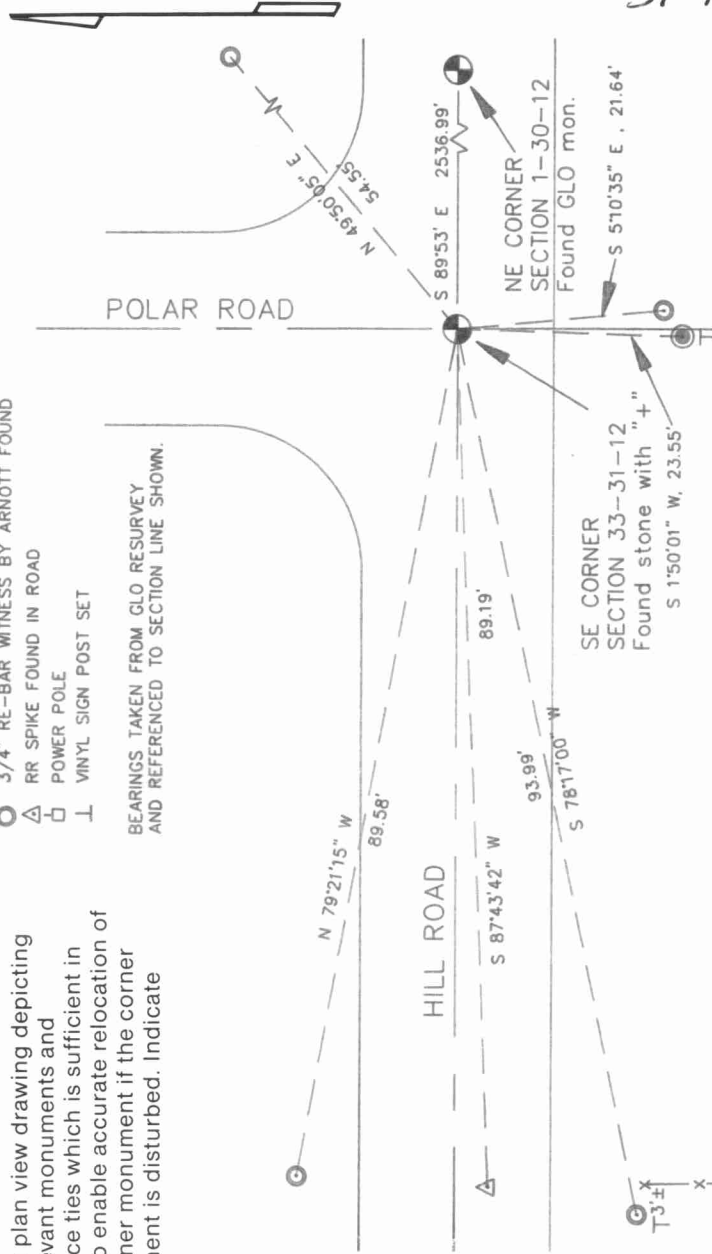
- (b) Describe any record evidence, monument evidence, occupational evidence, testimonial evidence or any other material evidence you considered, and whether the monument was found or placed.

The original corner was established in 1854 by James Withrow. Original BT's: birch, 18", N60°E, 23 lks., birch, 18", N48°E, 55 lks., elm, 8", N37°W, 26 lks., and an elm, 10", N62°W, 11 lks. In 1933, the GLO surveyors described the corner as "a stone, 6 x 8 x 24 ins., set 30" in ground, at the intersection of roads bearing E. and W. and N. marked with + on top. This cor. was perpetuated in 1901 from an original bearing tree, by B. F. Dorr, a local surveyor". Set conc. mon with brass cap witness corner 36 lks (23.76 ft.) south of stone found. 05/16/96 D. Tlusty, R. Brown dug with backhoe. Found stone with chiseled "+" down 1.4' below road. Set re-bar on N. edge. Found GLO WC monument to south, 23.55 ft.

- (c) In the plan view drawing below, provide reference ties to at least 4 witness monuments, or, if the location is within a municipality, to at least 2 witness monuments. (Witness monuments shall be made of concrete, natural stone, iron or other equally durable material.)
 Describe witness monuments.

- NOTES:
 ● BRASS CAP IN CONC. GLO WITNESS FOUND
 ○ 3/4" RE-BAR WITNESS BY ARNOTT FOUND
 △ RR SPIKE FOUND IN ROAD
 □ POWER POLE
 ⊥ VINYL SIGN POST SET

- (d) Show a plan view drawing depicting the relevant monuments and reference ties which is sufficient in detail to enable accurate relocation of the corner monument if the corner monument is disturbed. Indicate north.



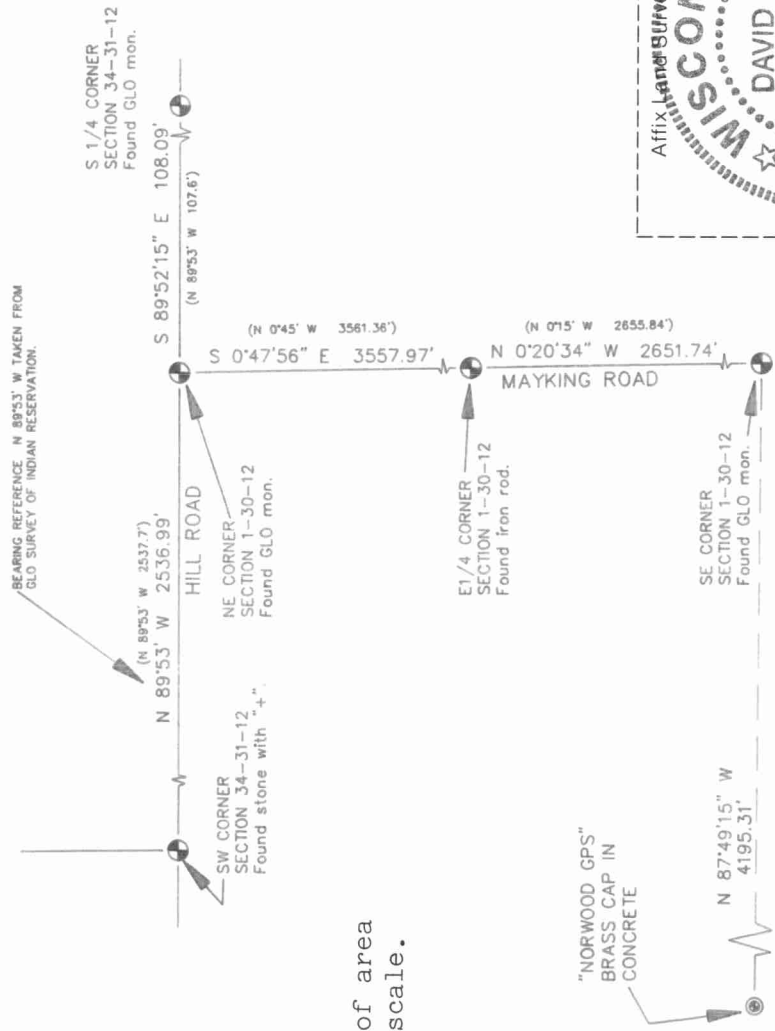
213
31-12

Describe any material discrepancy between the location of the corner as restored or reestablished and the location of that corner as previously restored or reestablished by distance and direction. Show the discrepancy on the plan view drawing under (d), above. Show the distances between the corner as previously restored or reestablished and (1) the corner as restored or reestablished, and (2) to at least 2 of the witness monuments shown on the drawing in (d), above.

The stone found is N 0°11' E, 3.51' from a corner established by Tom Arnott on 08/01/96.

- (f) Was the corner restored through acceptance of (1) an obliterated evidence location, or, (2) a found perpetuated location?
 A found perpetuated location.

- (g & h) Was the corner reestablished through lost corner proportionate methods? If so, show the method, including the directions and distances to other public land survey corners used as evidence or used for proportioning in determining the corner location.
 No.



Sketch of area
 Not to scale.



- (i) I, David E. Tlusty, Langlade County Surveyor,
 (type or print name)
 certify that the corner location shown on this record was determined by me or under my direction and control and that this U.S. Public Land Survey Monument Record is correct and complete to the best of my knowledge and belief.

David E. Tlusty 7/29/96
 Signature Date