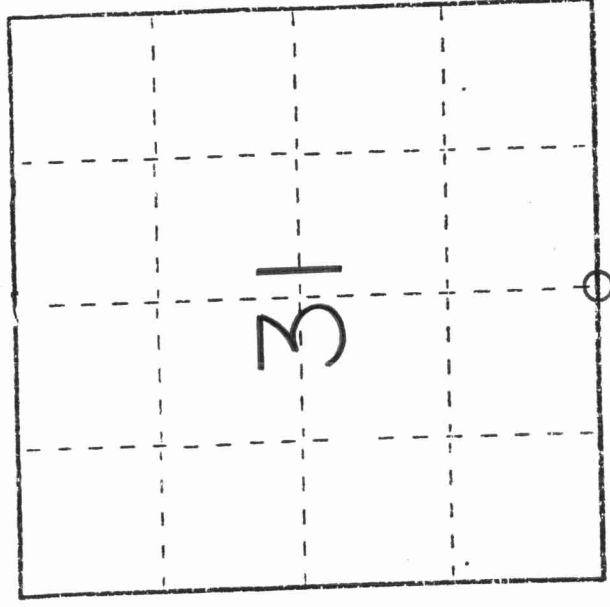


U. S. PUBLIC LAND SURVEY MONUMENT RECORD

I N S T R U C T I O N S : This record shall show the location of the corner and shall include all of the following nine elements (a through i).

- (a) Identify the corner by reference to the U.S. public land survey system.
 O = Corner monument restored.



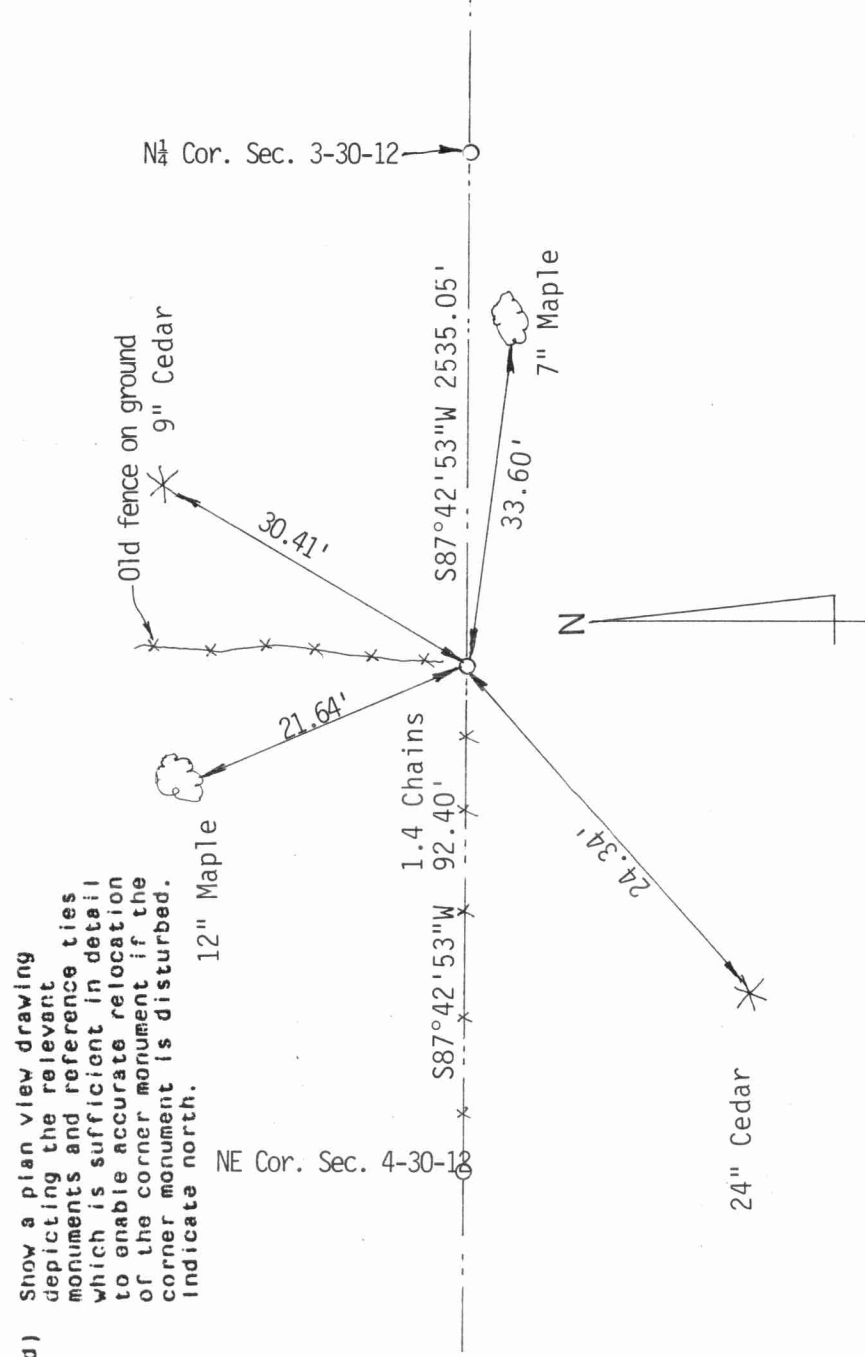
SOUTH ¼ CORNER SECTION 31, T31N, R12E

- (b) Describe any record evidence, monument evidence, occupational evidence, any other material evidence you considered, and whether the monument was found or placed.

Original corner was cedar post set by James Marsh in 1851. In 1932, M. Hutchinson set a 1½" Iron Shaft. Traversed to general area, found fence line intersection. Looked with magnetic locator, found no evidence of corner. Held straight line from SW Cor. Sec 31-31-12 to N¼ Cor. Sec. 3-30-12. Used doubled distance from existing 40 corner set and on record by Hallsey (3-30-12), then came back record distance of 1.4 chains from NW Cor Sec. 3-30-12. Matched fence line intersection. Tied out, painted ties and monument yellow. Set Langlade County Aluminum Monument.

- (c) In the plan view drawing below, provide reference ties to at least 4 witness monuments, or, if the location is within a municipality, to at least 2 witness monuments. (Witness monuments shall be made of concrete, natural stone, iron or other equally durable material.) Describe witness monuments.

- (d) Show a plan view drawing depicting the relevant monuments and reference ties which is sufficient in detail to enable accurate relocation of the corner monument if the corner monument is disturbed. Indicate north.



(a) Describe any material discrepancy between the location of the corner as restored or reestablished and the location of that corner as previously restored or reestablished by distance and direction. Show the discrepancy on the plan view drawing under (d), above. Show the distances between the corner as previously restored or reestablished and (i) the corner as restored or reestablished, and (2) to at least 2 of the witness monuments shown on the drawing in (d), above.

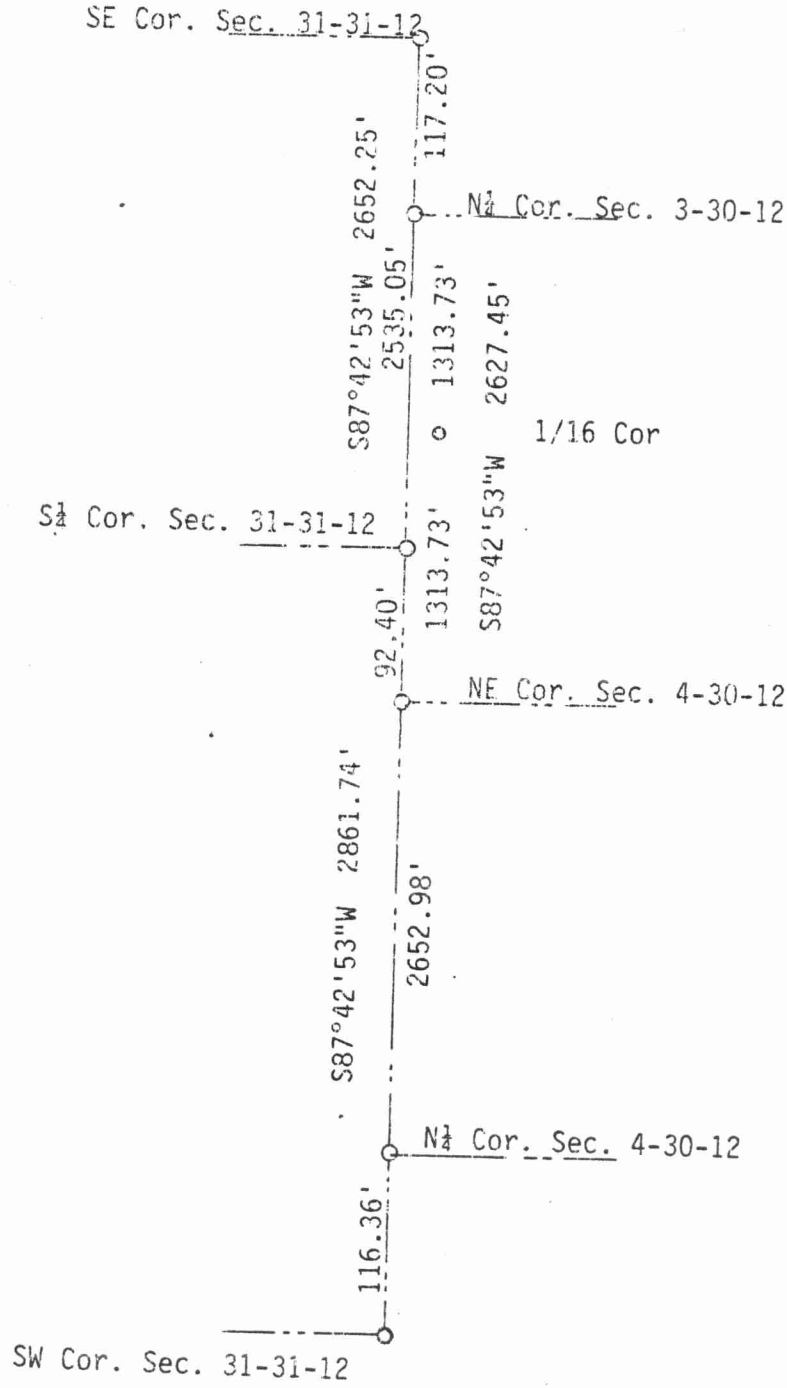
NONE

(f) Was the corner restored through acceptance of (1) an obliterated evidence location, or, (2) a found perpetuated location?

Found no evidence of iron bar set in 30's. Set corner 1.4 chains East of NE cor. Sec. 4-30-12 as per original notes. Matched existing fence lines.

(g&h) Was the corner reestablished through lost corner proportionate methods? If so, show the method, including the directions and distances to other public land survey corners used as evidence or used for proportioning in determining the corner location?

Since this is a Township line, held straight line between existing corners East & West. Matched all lines of occupation, distances looked very good.



(i) I, David L. Osterbrink RLS No. S-2014
 (type or print name) certify that the corner location shown
 on this record was determined by me or under my direction and
 control and that this U.S. Public Land Survey Monument Record is
 correct and complete to the best of my knowledge and belief.

David L. Osterbrink
 Signature

2-28-92
 Date

