

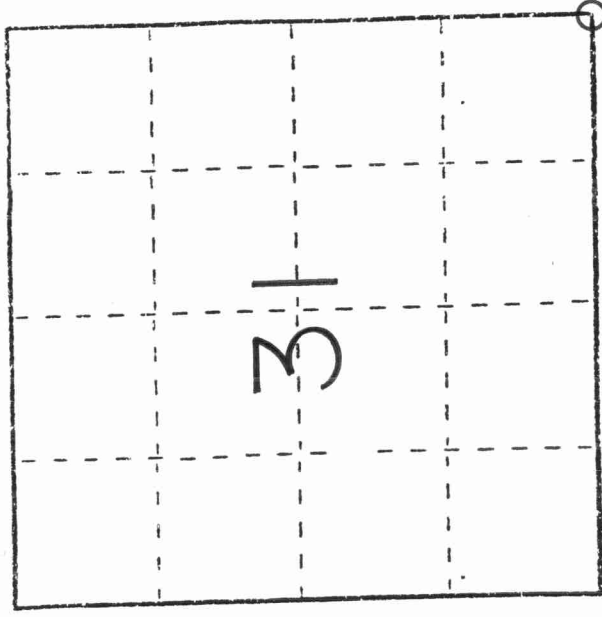
# U. S. PUBLIC LAND SURVEY MONUMENT RECORD

**I N S T R U C T I O N S :**

This record shall show the location of the corner and shall include all of the following nine elements (a through i).

- (a) Identify the corner by reference to the U.S. public land survey system.

○ = Corner monument restored.



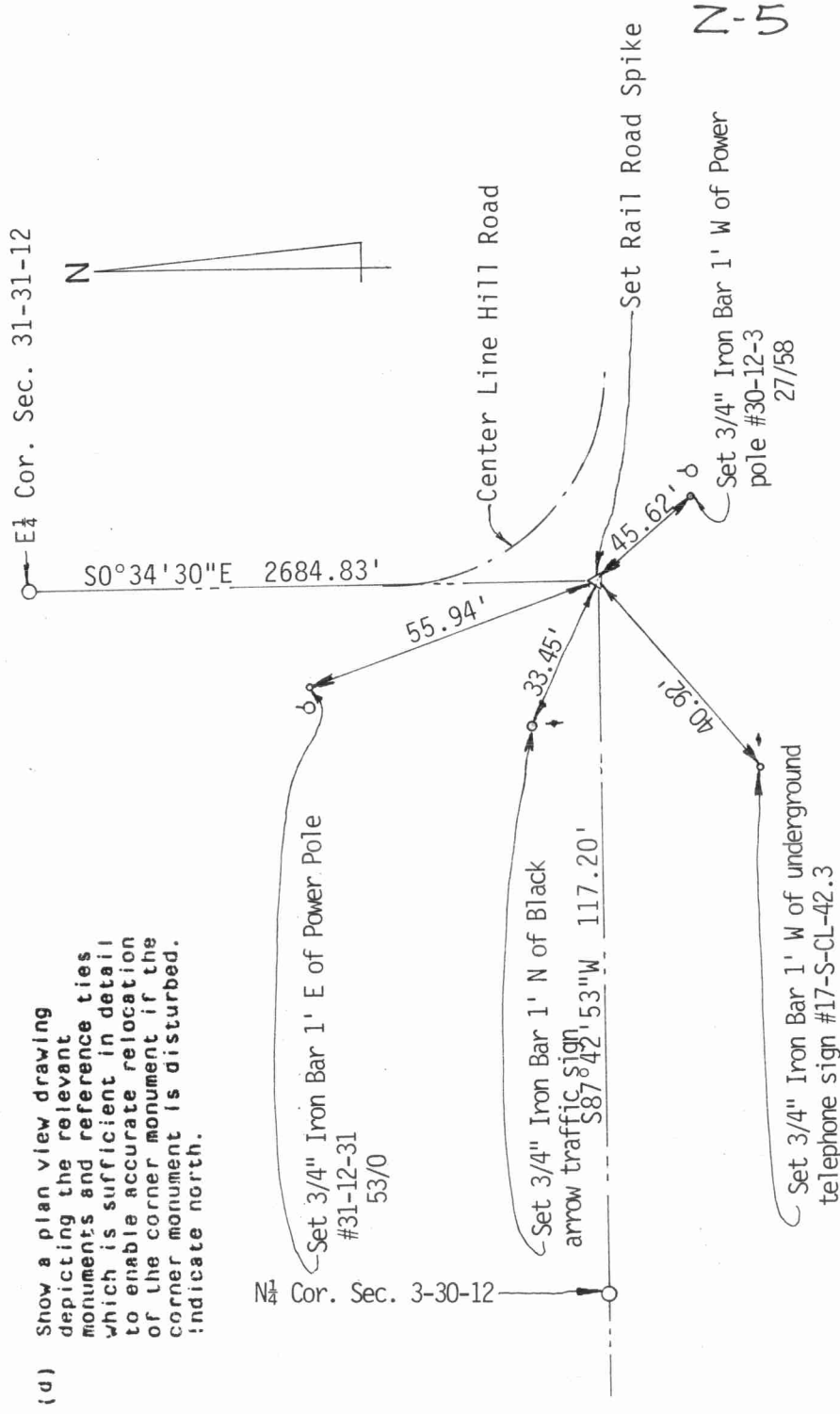
SOUTHEAST CORNER SECTION 31-31-12

- (b) Describe any record evidence, monument evidence, occupational evidence, testimonial evidence or any other material evidence you considered, and whether the monument was found or placed.

Original corner set by James Marsh 1851, cedar post. In 1932, a iron bar may have been set. Searched area with magnetic locator, found no evidence. road is in slight cut, so it was probably knocked out. Held center line of Hill Road from North, and straight line from corners set and found to the West of here. The Northeast corner of Sec. 3-30-12 is or was on record. The tie sheet is gone, I found a 1" Iron Pipe on the South edge of pavement, not sure if that is corner, or witness.

Distances fit lines of occupation well. Set Rail Road spike in black top for corner. Tied out, painted bars and RR spike yellow.

- (c) In the plan view drawing below, provide reference ties to at least 4 witness monuments, or, if the location is within a municipality, to at least 2 witness monuments. (Witness monuments shall be made of concrete, natural stone, iron or other equally durable material.) Describe witness monuments.



(e) Describe any material discrepancy between the location of the corner as restored or reestablished and the location of that corner as previously restored or reestablished by distance and direction. Show the discrepancy on the plan view drawing under (d), above. Show the distances between the corner as previously restored or reestablished and (1) the corner as restored or reestablished, and (2) to at least 2 of the witness monuments shown on the drawing in (d), above.

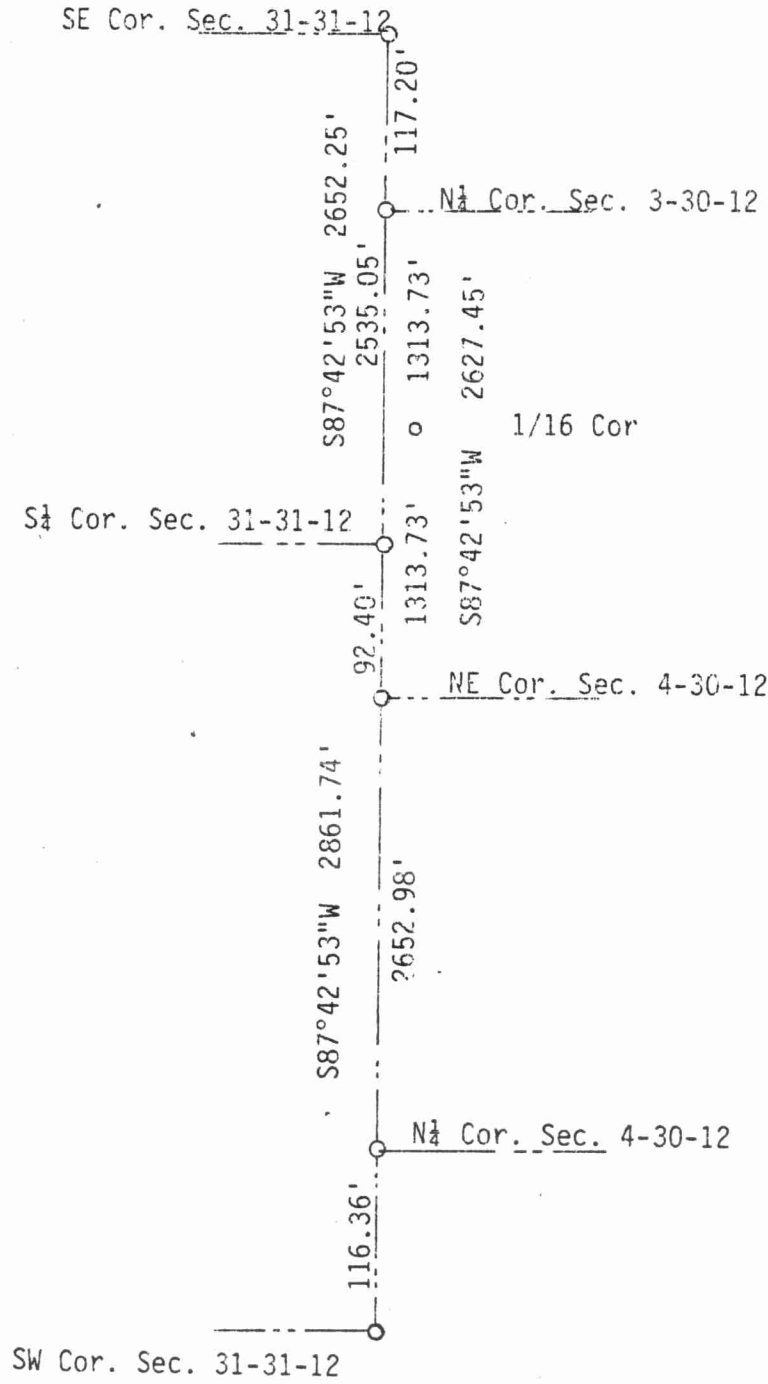
NONE

(f) Was the corner restored through acceptance of (1) an obliterated evidence location, or, (2) a found perpetuated location?

Corners in area were iron pipes or bars. No magnetic reading. Assumed corner to be lost. Held Center Line of road as best evidence of corner location. Fence lines in section agreed with break down.

(g) Was the corner reestablished through lost corner proportionate methods? If so, show the method, including the directions and distances to other public land survey corners used as evidence or used for proportioning in determining the corner location?

Since this is a Township line, held straight line between existing corners East & West. Matched all lines of occupation, distances looked very good.



(1) I, David L. Osterbrink RLS No. S-2014  
 (type or print name) certify that the corner location shown  
 on this record was determined by me or under my direction and  
 control and that this U.S. Public Land Survey Monument Record is  
 correct and complete to the best of my knowledge and belief.

David L. Osterbrink  
 Signature

2-28-92  
 Date

