

U.S. PUBLIC LAND SURVEY MONUMENT RECORD

(Prepared and as required by S. A-E 7.08 WI Administrative Code)

The EAST 1/4 corner of Section 29, T. 31 N., R. 12 E., Langlade County, WI
Corner was (check all that apply)

- Restored through acceptance of an obliterated evidence location.
- Restored through acceptance of a found perpetuated location.
- Determined to be lost and re-established through proportionate methods. (show bearings and distances to PLSS corners used for proportioning.)
- Restored/recovered/re-established in a location that differs from a previously established position. (Show difference in plan view below.)
- Check here if additional information is shown on the reverse side of this form.

Describe record evidence, recovered physical evidence, occupational evidence, testimonial evidence, and all other evidence considered in the recovery/restoration of the corner.

1857 - Original corner established by J. McBride - bearing trees: Birch, 8", S78°W, 10 links; Birch, 12", S28°E, 10 links.

1940 - Fieldbook 106 Page 37, Hutchinson notes BT Elm 12", S40°15'E, 78 links.

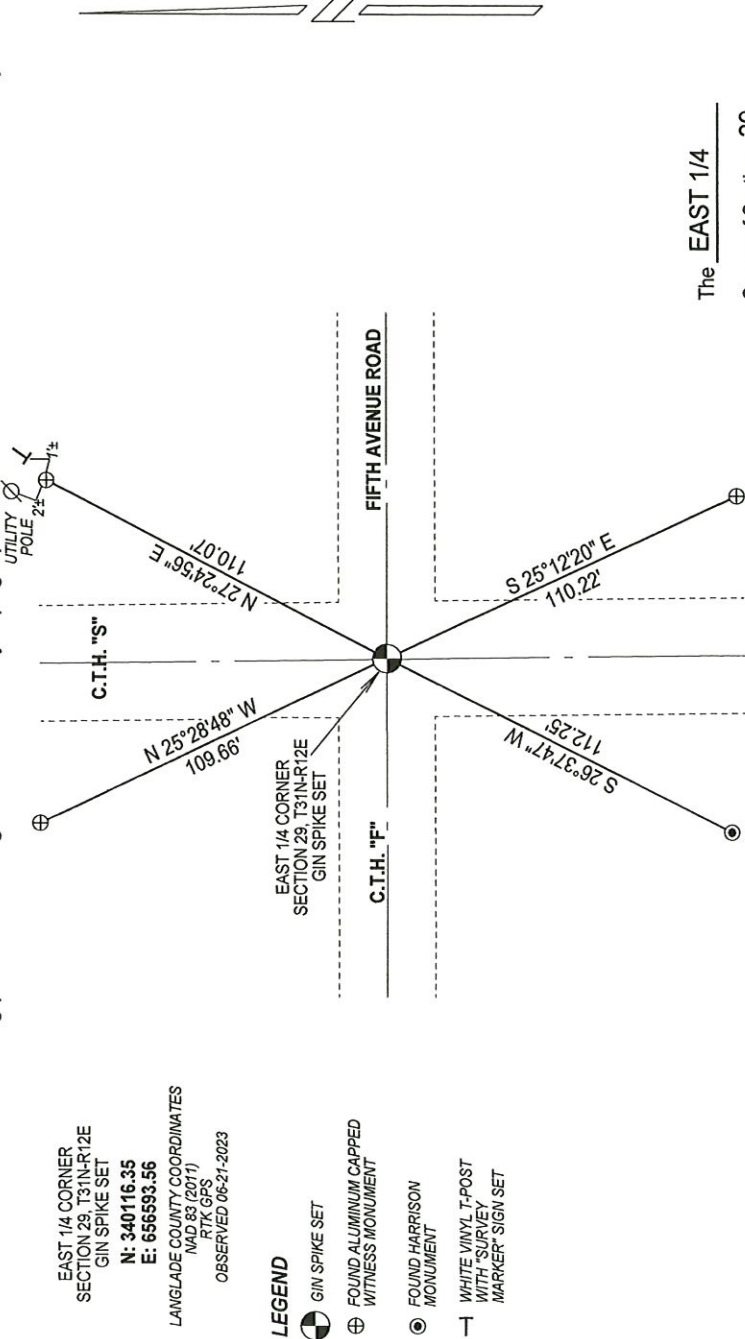
1980 - Jack Wallin referenced a railroad spike at corner location. Wallin made ties and filed tie sheet.

2023 - I set a gin spike at coordinates previously established on the railroad spike from survey work in the area.

Physical description of the monument set:

Set gin spike at corner location and tied out as shown below.

Describe the accessories used to perpetuate the location of the corner. Include a plan view drawing and indicate accessories found/set. Describe measuring point on bearing trees. Show any topographic features that would aid in future recovery of the corner.

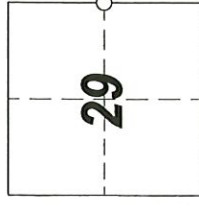


NOTES
- SKETCH NOT DRAWN TO SCALE.
- TIE BEARINGS SHOWN ARE LANGLADE COUNTY GRID BEARINGS.
- ALL TIES MEASURED ELECTRONICALLY WITH TOTAL STATION.

I, Michael J. Hoffman, certify that the corner location shown on this record was determined by me or under my direction and control and that this U.S. Public Land Survey Monument Record is correct and complete to the best of my knowledge and belief.

Michael Hoffman 09-01-2023
Signature Date

The EAST 1/4
Corner of Section 29
T. 31 N., R. 12 E.
Langlade County, WI



○ = Location of corner

SURVEYORS SEAL



INDEX No. T-9 4311229 2000

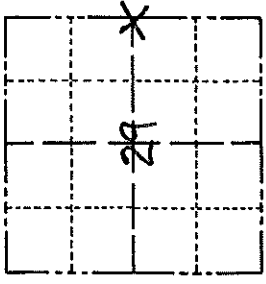
LANGRAD COUNTY

Survey monument record

FILE: _____

SECTION 29
TOWN 31
RANGE 12 E

TYPE OF MONUMENT: Well Point found
STATE PLANE COORDINATE: N _____ E _____
ELEVATION - M.S.L. DATUM: _____
THETA ANGLE: _____



BASIS FOR MONUMENT LOCATION

(Use reverse side if necessary)

Research revealed no information of any surveys that have been performed since the original government survey. Dug for monument with backhoe and discovered a well point lying about 7" beneath the black top. Accepted as correct.

SEAL: _____

LOCATION

(Indicated by 'X')

CERTIFIED CORRECT:

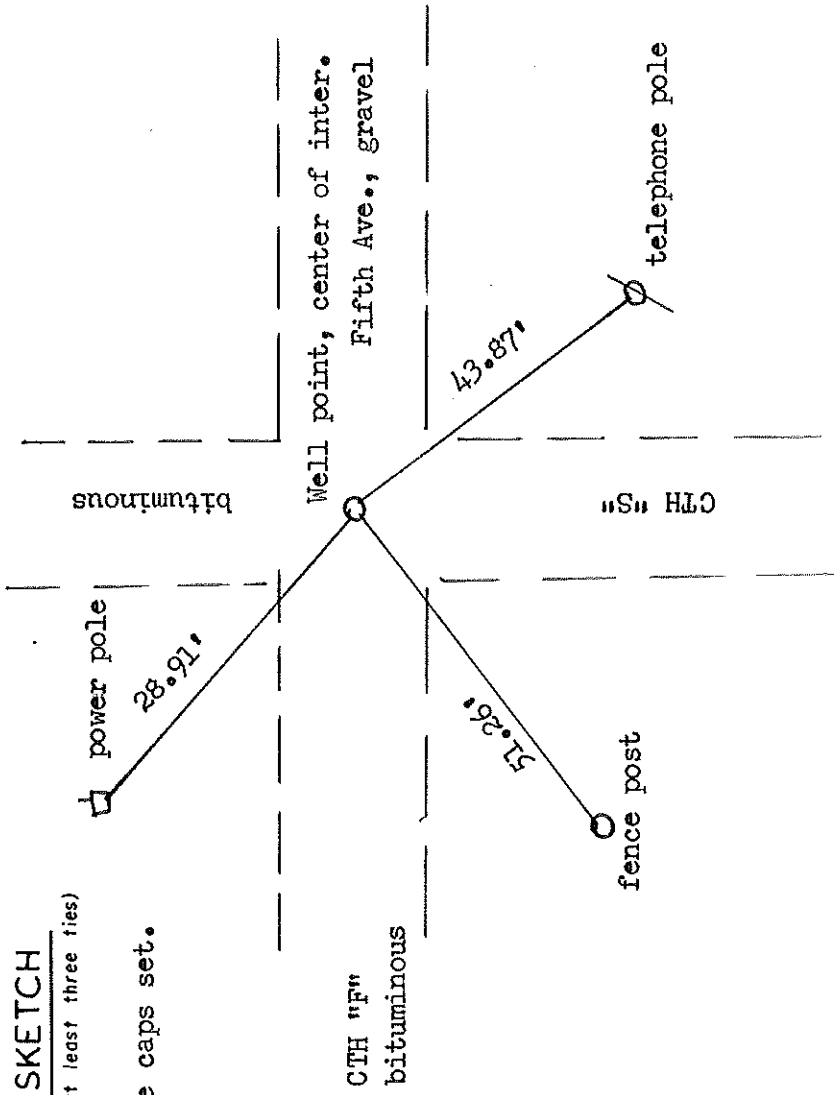
Walter W. Wilson
REGISTERED LAND SURVEYOR

DATE: 9-2-70

TIE SKETCH

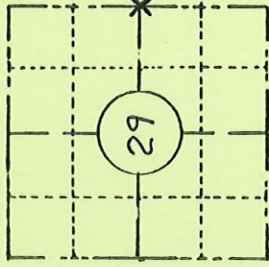
(Show at least three ties)

bottle caps set.



79

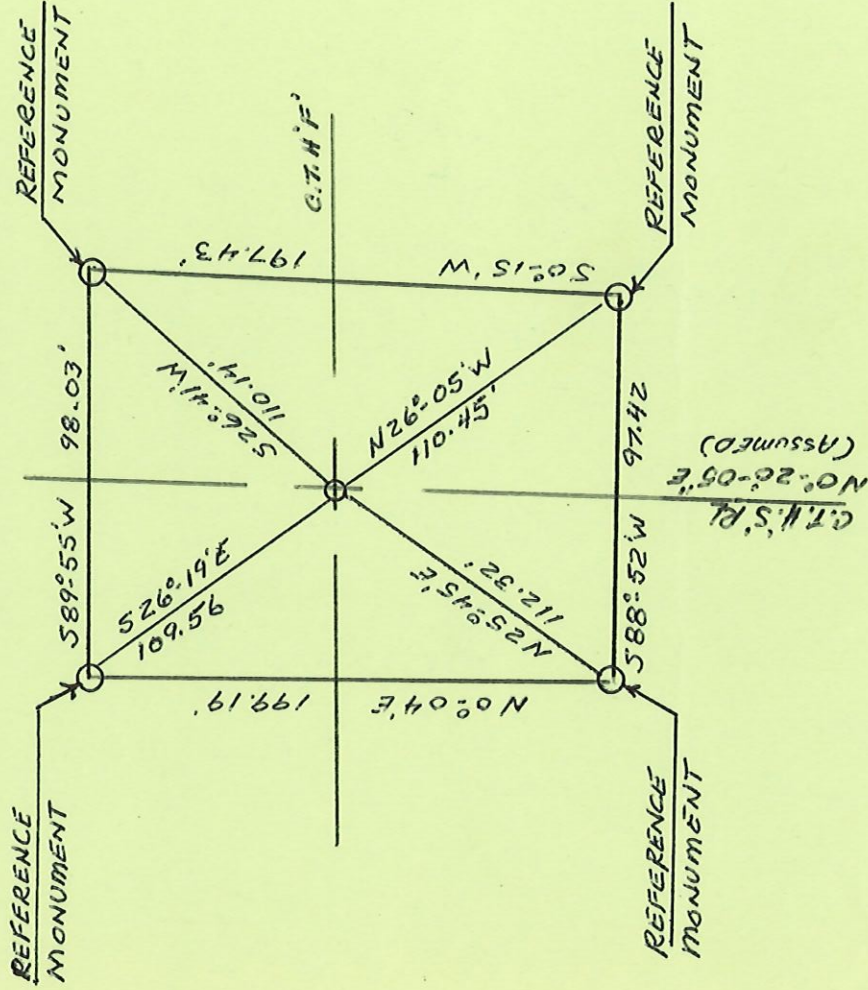
COUNTY	LANGLADE		
TOWN	POLAR		
HIGHWAY	C.T.H.'S'		
SECTION	TOWNSHIP	RANGE	
29	31N	12E	
TYPE OF LANDMARK			
Rail Road Spike			



LOCATION SKETCH
 (Location of landmark indicated by "x")



This space for copy of field notes or ties to the above described landmarks



FILED UNDER PROJECT	9381-6-70		
DISTRICT OFFICE NUMBER	CITY	COUNTY	
7	Rhinelandere	ONEIDA	
LOCATED OR ESTABLISHED BY			
NAME JACK wallin			
TITLE SURVEY Crew Chief			
			DATE 6-3-80

COUNTY CLERK'S OFFICE	WISCONSIN	
COUNTY OF		
DATE RECEIVED FOR RECORD	DATE COPY SENT TO COUNTY SURVEYOR	
June 17, 1980	8-20-80	W.F. Kelly
SIGNATURE OF COUNTY CLERK		
Neilman J. Oyster		

PRESERVATION OF LANDMARKS