

# U.S. PUBLIC LAND SURVEY MONUMENT RECORD

(Prepared and as required by S. A-E 7.08 WI Administrative Code)

The SOUTH 1/4 corner of Section 24, T. 31 N., R. 12 E., Langlade County, WI  
 Corner was (check all that apply)

- Restored through acceptance of an obliterated evidence location.
- Restored through acceptance of a found perpetuated location.
- Determined to be lost and re-established through proportionate methods. (show bearings and distances to PLSS corners used for proportioning.)
- Restored/recovered/re-established in a location that differs from a previously established position. (Show difference in plan view below.)
- Check here if additional information is shown on the reverse side of this form.

**Describe record evidence, recovered physical evidence, occupational evidence, testimonial evidence, and all other evidence considered in the recovery/restoration of the corner.**

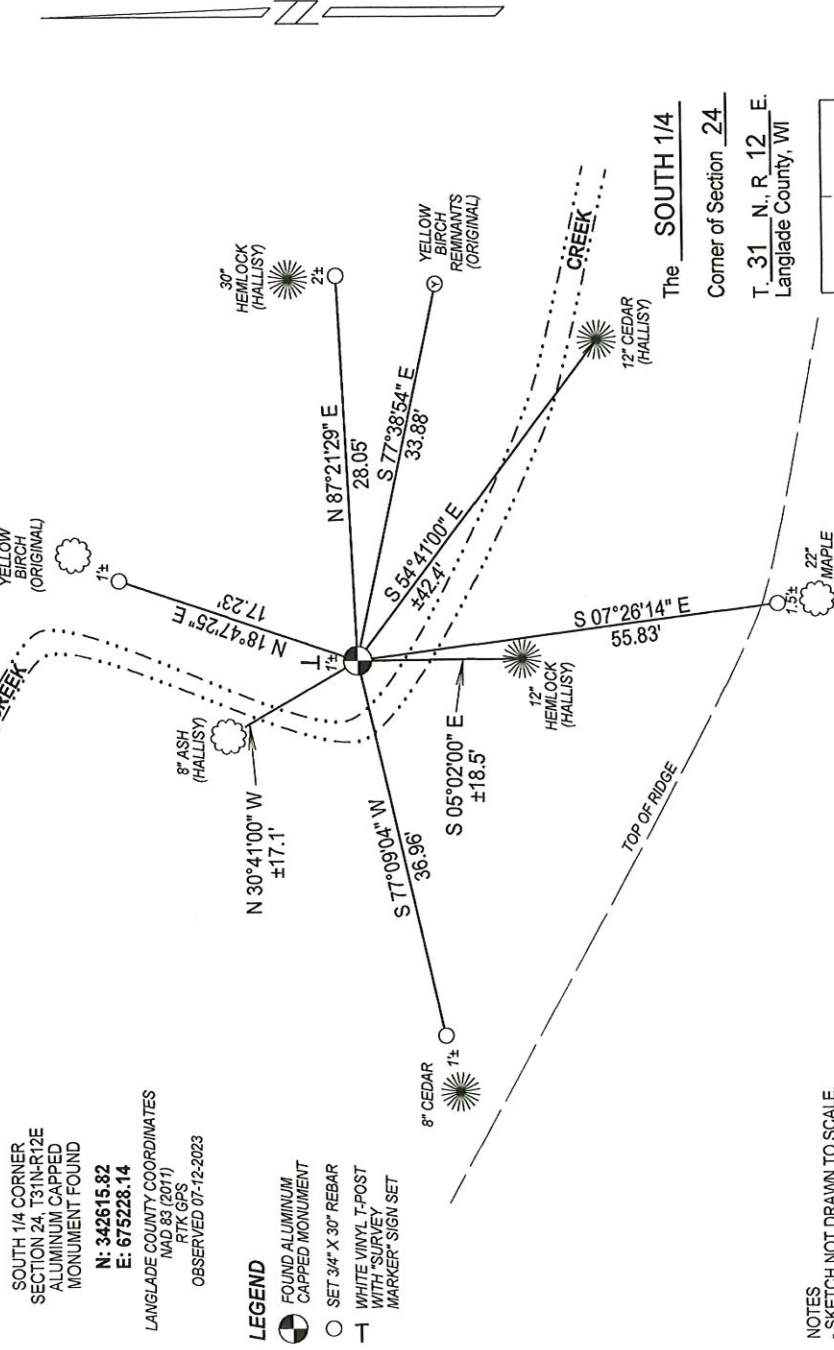
1857 - Original corner established by J. McBride - bearing trees: Birch, 12", S73°E, 51 links; Birch, 8", N20°E, 29 links;  
 1987 - Raymond Hallisy found existing original BT Yellow Birch N20°E, 29 links faced breast high, stump of original yellow birch S73°E, 51 links. Hallisy set a aluminum capped monument at the corner location, made additional ties and filed a tie sheet.

2023 - I found the existing aluminum capped monument as set by Hallisy in good condition. I also found the existing yellow birch BT "N20°E, 29 links" still standing and in good condition and remnants of the other original BT. BT's as set by Hallisy still present and in good condition. I verified location from existing BT's and set additional witness monuments.

**Physical description of the monument set:**

Accepted aluminum capped monument as corner location and tied out as shown below.

Describe the accessories used to perpetuate the location of the corner. Include a plan view drawing and indicate accessories found/set. Describe measuring point on bearing trees. Show any topographic features that would aid in future recovery of the corner.



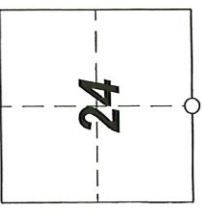
SOUTH 1/4 CORNER  
 SECTION 24, T31N-R12E  
 ALUMINUM CAPPED  
 MONUMENT FOUND  
 N: 342615.82  
 E: 675228.14  
 LANGLADE COUNTY COORDINATES  
 RTK GPS  
 (MAD 68 (2011))  
 OBSERVED 07-12-2023

- LEGEND**
- FOUND ALUMINUM CAPPED MONUMENT
  - SET 3/4" X 30" REBAR
  - WHITE VINYL T-POST WITH "SURVEY MARKER" SIGN SET

NOTES  
 - SKETCH NOT DRAWN TO SCALE.  
 - TIE BEARINGS SHOWN ARE LANGLADE COUNTY GRID BEARINGS.  
 - ALL TIES MEASURED ELECTRONICALLY WITH TOTAL STATION.  
 - DISTANCES TO EXISTING BT'S MEASURED TO FACE CHEST HIGH.

I, Michael J. Hoffman certify that the corner location shown on this record was determined by me or under my direction and control and that this U.S. Public Land Survey Monument Record is correct and complete to the best of my knowledge and belief.

Michael J. Hoffman Signature  
09-05-2023 Date



INDEX No. R-23 4311224 0020

○ = Location of corner

CERTIFIED LAND CORNER RESTORATION

Index No. R-22

State of Wisconsin }  
County of Langlade } ss.

History of original corner establishment:

original survey 1850, s

I Raymond Hallisy, do hereby certify that on the 16th day of June, 1987, I found evidence of the N 1/4 corner corner of 25 Township 31, North, Range 12 E, Fourth Principal Meridian, as described hereon; and that from this evidence I established a new monument and accessories as described hereon to perpetuate the original location of this corner.

4/20/04  
APPROX LAT/LONG  
BY TED. A.  
45° 08.790'  
88° 56.369'

Description of corner evidence found: 8" Now 20"

original Yellow Birch BT N20E 29 LKS  
FACED BREAST HIGH

stump of original Yellow Birch  
57E 51 LKS

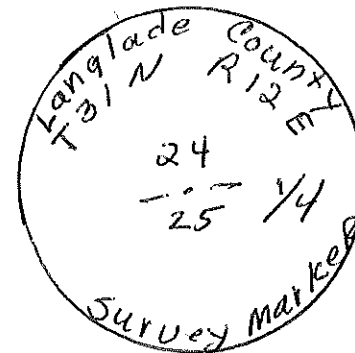
Small stream E + W conforms to Distances FROM  
original Field Notes - Old Fence N + S

Resident witnesses:

Description of monument and accessories I established to perpetuate the original location of this corner.

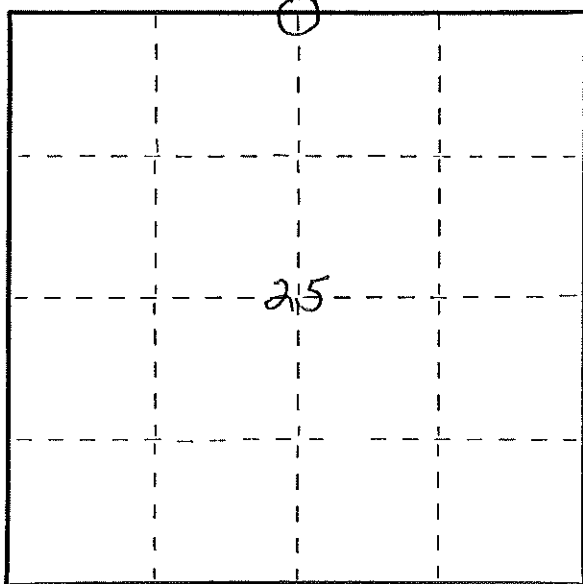
set 3" Aluminum Pipe  
with CAP

NEW B.T.S  
Black Ash 7" N31W 26.7 LKS  
Hemlock 18" N84E 43.6 LKS  
Cedar 10" S53E 65.2 LKS  
Hemlock 7" S4E 29.7 LKS



FORM 985 H. C. MILLER CO., MILWAUKEE

T 31 N R 12 E



○ = Corner monument restored.

Dated at Antigo, Wis., this 16th day of June, 1987.

Signature Raymond Hallisy Title Land Surveyor Registration No. 5-685  
(County Surveyor, Registered Land Surveyor, or other duly authorized official)

Office of Register of Deeds, County of \_\_\_\_\_, I hereby certify that the within instrument was filed in this office for record on the \_\_\_\_\_ day of \_\_\_\_\_, 19\_\_\_\_ at \_\_\_\_\_ o'clock \_\_\_\_\_ M.

(Register of Deeds)

By \_\_\_\_\_ Deputy