

U.S. PUBLIC LAND SURVEY MONUMENT RECORD

(Prepared and as required by S. A-E 7.08 WI Administrative Code)

The SOUTHEAST corner of Section 24, T. 31 N., R. 12 E., Langlade County, WI
Corner was (check all that apply)

- Restored through acceptance of an obliterated evidence location.
- Restored through acceptance of a found perpetuated location.
- Determined to be lost and re-established through proportionate methods. (show bearings and distances to PLSS corners used for proportioning.)
- Restored/recovered/re-established in a location that differs from a previously established position. (Show difference in plan view below.)
- Check here if additional information is shown on the reverse side of this form.

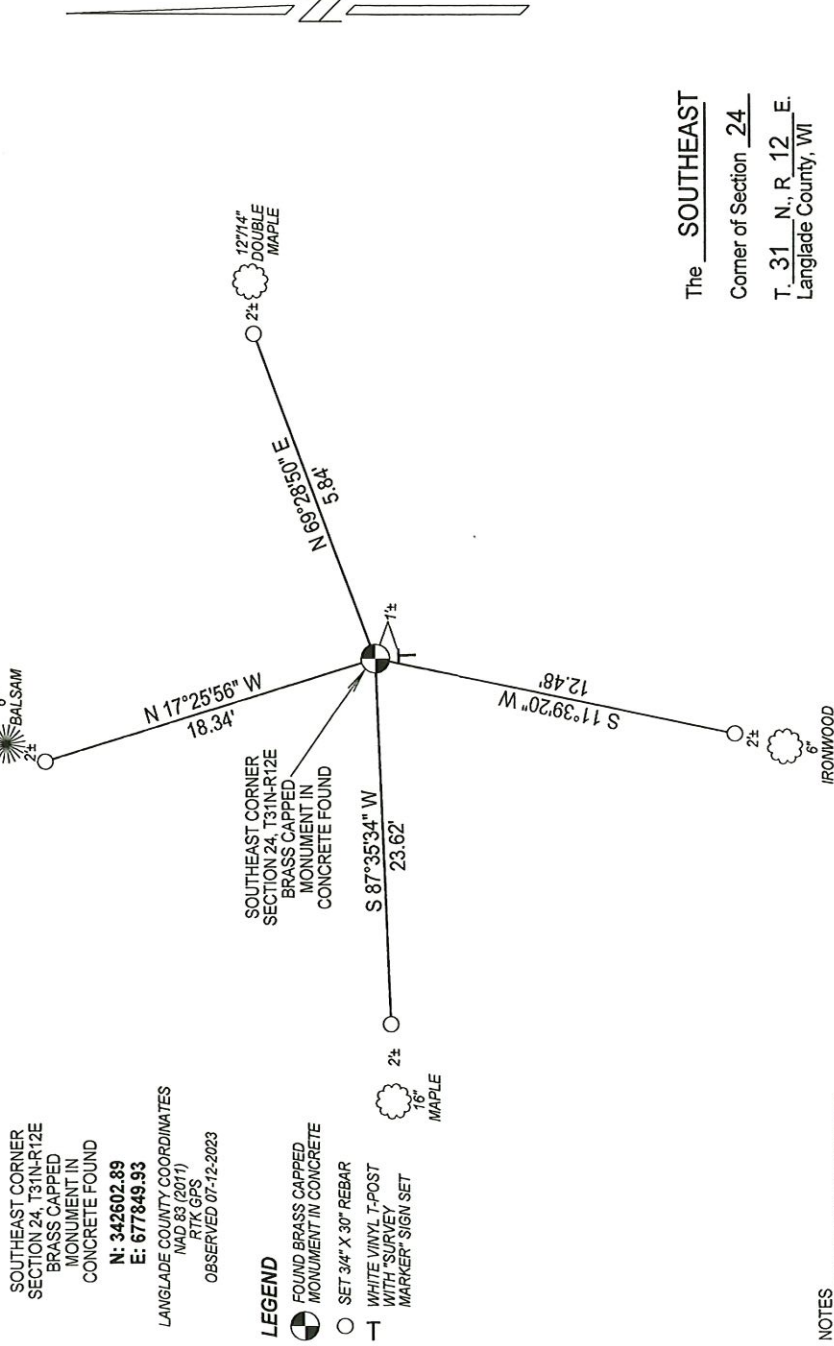
Describe record evidence, recovered physical evidence, occupational evidence, testimonial evidence, and all other evidence considered in the recovery/restoration of the corner.

- 1857 - Original corner established by A. Millard - bearing trees: Hemlock, 12", N34°W, 13 links; Yellow Birch, 19", N29°E, 20 links; Hemlock, 13", S62°E, 39 links and Cedar, 20", S28°W, 9 links.
- 1986 - Raymond Hallisy notes "4" brass cap in 2" iron pipe in cement, fence south." Hallisy made bearing tree ties and filed a tie sheet.
- 2023 - I found the existing brass capped monument set in concrete noted by Hallisy.

Physical description of the monument set:

Accepted brass capped monument as corner location and tied out as shown below.

Describe the accessories used to perpetuate the location of the corner. Include a plan view drawing and indicate accessories found/set. Describe measuring point on bearing trees. Show any topographic features that would aid in future recovery of the corner.



NOTES
- SKETCH NOT DRAWN TO SCALE.
- TIE BEARINGS SHOWN ARE LANGLADE COUNTY GRID BEARINGS.
- ALL TIES MEASURED ELECTRONICALLY WITH TOTAL STATION.

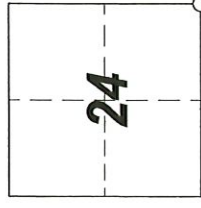
SURVEYORS SEAL



I, Michael J. Hoffman, certify that the corner location shown on this record was determined by me or under my direction and control and that this U.S. Public Land Survey Monument Record is correct and complete to the best of my knowledge and belief.

Michael J. Hoffman 09-05-2023
Signature Date

The SOUTHEAST
Corner of Section 24
T. 31 N., R. 12 E.
Langlade County, WI



○ = Location of corner

INDEX No. R -25 4311224 0000

CERTIFIED LAND CORNER RESTORATION

Index No. R-25
T 31 N R 12 E

State of Wisconsin }
County of Lanai } ss.

I Raymond J. Hallisy, do hereby certify that on the 25th day of OCTOBER, 1986, I found evidence of the SECTION corner of 24, 25, 19, 30 Township 31, North, Range 12 + 13 E., Fourth Principal Meridian, as described hereon; and that from this evidence I established a new monument and accessories as described hereon to perpetuate the original location of this corner.

Resident witnesses:

.....
.....
.....

Description of corner evidence found:

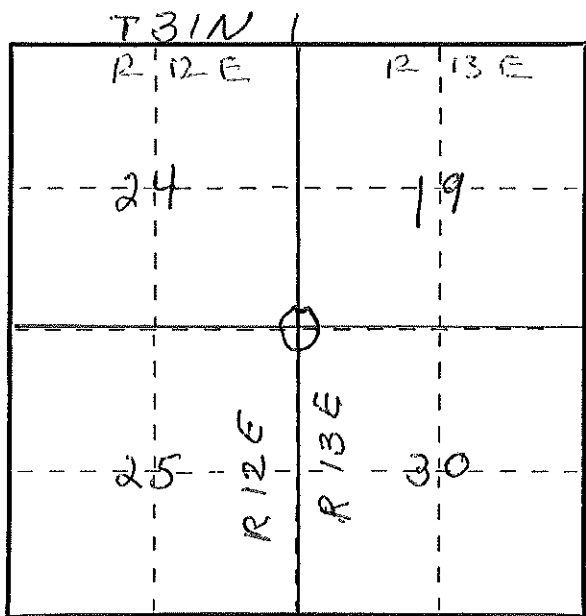
4" BRASS CAP IN 2" IRON PIPE
IN cement
MARKED →
Fence south



Description of monument and accessories I established to perpetuate the original location of this corner.

New BT's
Red maple 7" N 76 E 9' 3"
" " 10" S 84 W 26' 1"
Balsam 7" N 4° W 10' 1"
Red maple 7" N 70 W 20' 8"

FORM 985 M. G. MILLER CO., MILWAUKEE



○ = Corner monument restored.

Dated at Appl 190, Wis., this 25th day of OCTOBER, 1986

Signature Raymond J. Hallisy Title Land Surveyor Registration No. 5685
(County Surveyor, Registered Land Surveyor, or other duly authorized official)

Office of Register of Deeds, County of....., I hereby certify that the within instrument was filed in this office for record on the.....day of....., 19..... at.....o'clock..... M.

.....
(Register of Deeds)

By.....Deputy