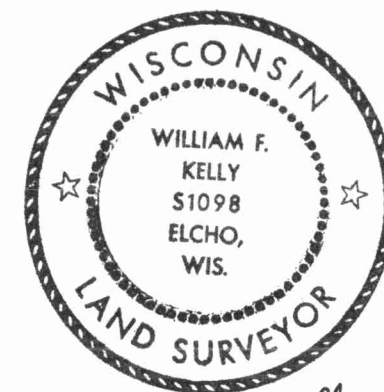


CERTIFIED LAND CORNER RESTORATION

Index No. 0-14<sup>1</sup>/<sub>2</sub>  
31-12



*William F. Kelly*  
 22 April 1976

State of Wisconsin }  
 County of LANGLADE } ss.

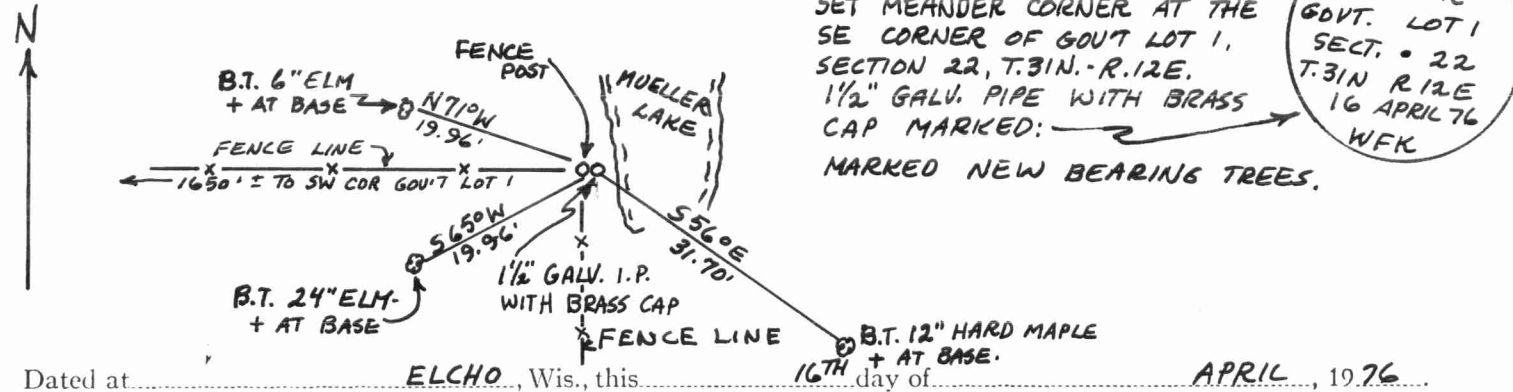
I WILLIAM F. KELLY, do hereby certify that on the 16<sup>TH</sup> day of APRIL, 1976, I found evidence of the MEANDER CORNER corner of SECTION 22 Township 31, North, Range 12 E, Fourth Principal Meridian, as described hereon; and that from this evidence I established a new monument and accessories as described hereon to perpetuate the original location of this corner.

Resident witnesses:  
 \_\_\_\_\_  
 \_\_\_\_\_  
 \_\_\_\_\_

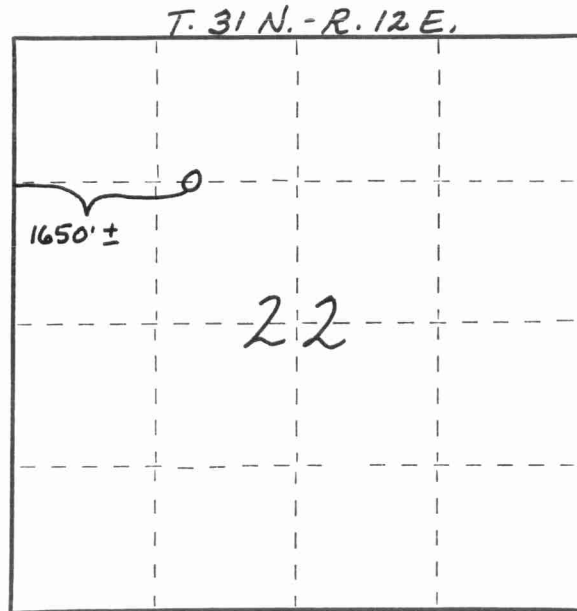
History of original corner establishment:

Description of corner evidence found:  
FOUND OLD IRON PIPE MARKING INTERSECTION OF LINE FENCES ON WEST SHORE OF THE TIP OF MUELLER LAKE.  
CORNER VERIFIED FROM CONTROL SURVEY FOR MUELLER LAKE SUB DIVISION

Description of monument and accessories I established to perpetuate the original location of this corner.



FORM 985 H. C. MILLER CO., MILWAUKEE



○ = Corner monument restored.

Dated at ELCHO, Wis., this 16<sup>TH</sup> day of APRIL, 1976

Signature William F. Kelly Title REGISTERED LAND SURVEYOR Registration No. 51098  
 (County Surveyor, Registered Land Surveyor, or other duly authorized official)

Office of Register of Deeds, County of \_\_\_\_\_, I hereby certify that the within instrument was filed in this office for record on the \_\_\_\_\_ day of \_\_\_\_\_, 19\_\_\_\_ at \_\_\_\_\_ o'clock \_\_\_\_\_ M.

(Register of Deeds)

By \_\_\_\_\_ Deputy

