

4311221 0020

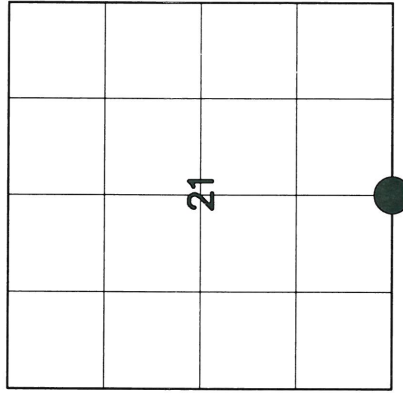
# U.S. PUBLIC LAND SURVEY MONUMENT RECORD

HISTORY OF ORIGINAL CORNER ESTABLISHMENT AND SUBSEQUENT RESTORATION AND DESCRIPTION OF ANY RECORD, MONUMENT OCCUPATIONAL, TESTIMONIAL OR OTHER EVIDENCE CONSIDERED:

THE ORIGINAL CORNER WAS SET BY McBRIDE WITH THE ORIGINAL BEARING TREES OF:

- 6" MAPLE - N44°W 12 LINKS
- 6" DOUG FIR - S32°E 12 LINKS
- 1977 - NORDIN RECOVERED A STONE WITH A CHISELED CROSS
- 1992 - DOBBRATZ FOUND THE STONE AND SET A LANGLADE CO. MONUMENT.

WE WERE UNABLE TO LOCATED THE STONE OR THE MONUMENT. WE DID LOCATED A 1-1/4" IRON PIPE 2 FEET BELOW THE SURFACE. NORDIN INDICATED ON VOL. 13 CSM PG 31, THE IRON DID NOT AGREE WITH THE TIES BY DOBBRATZ HAD SET IN 1992. WE LEFT THE IRON IN PLACE AND SET A 2"X30" BRASS CAP MONUMENT FROM DOBBRATZ TIE SHEET.



● = LOCATION OF CORNER

SECTION 21

TOWNSHIP 31 NORTH, RANGE 12 EAST

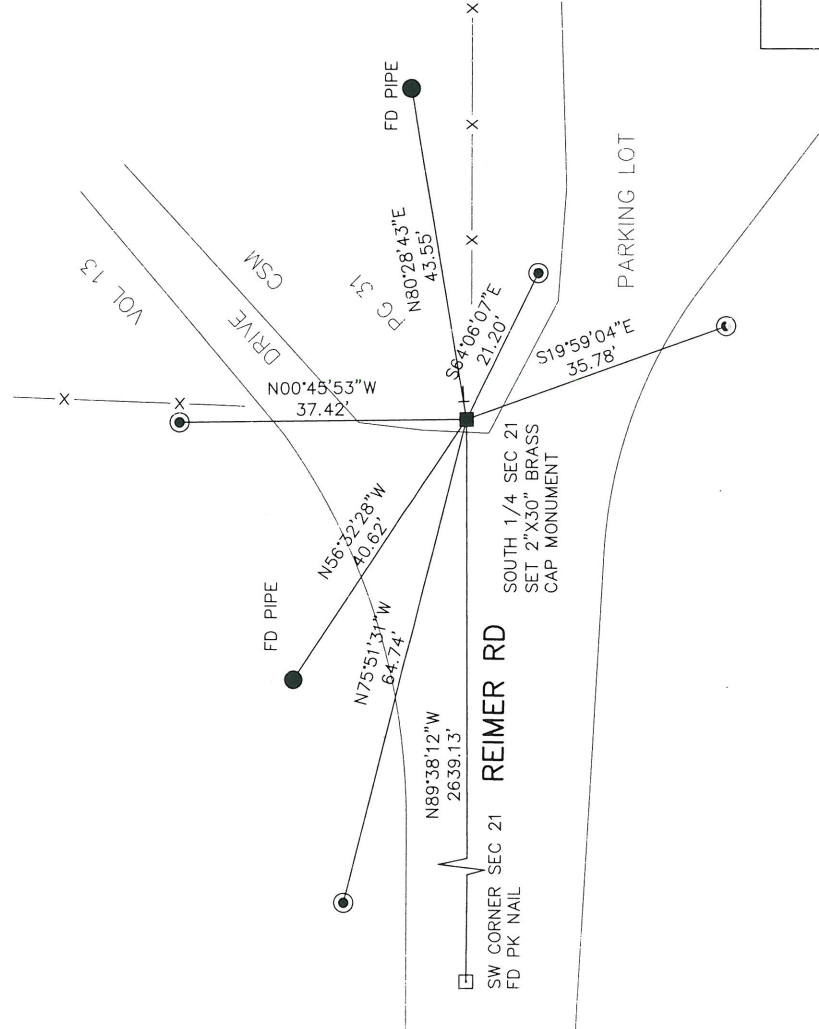
TOWN OF POLAR

LANGLADE COUNTY, WISCONSIN

CORNER WAS: (CHECK ALL THAT APPLY)

- RESTORED THROUGH ACCEPTANCE OF AN OBLITERATED EVIDENCE LOCATION
- RESTORED THROUGH ACCEPTANCE OF A FOUND PERPETUATED LOCATION
- CONSIDERED A LOST CORNER AND REESTABLISHED THROUGH LOST CORNER PROPORTIONATE METHODS (INCLUDE A PLAN VIEW DRAWING SHOWING DISTANCES AND DIRECTIONS TO OTHER PUBLIC LAND SURVEY CORNERS USED FOR PROPORTIONING AND DETERMINING THE CORNER LOCATION)
- RESTORED OR REESTABLISHED IN A LOCATION THAT DIFFERS FROM A PREVIOUS RESTORATION OR REESTABLISHMENT (INCLUDE A PLAN VIEW DRAWING AND INDICATE WHAT WAS SET AND/OR FOUND)
- CHECK IF THERE IS ADDITIONAL INFORMATION ON BACK

DESCRIBE THE MONUMENT AND ACCESSORIES USED TO PERPETUATE THE LOCATION OF THE CORNER. (INCLUDE A PLAN VIEW DRAWING AND INDICATE WHAT WAS SET AND/OR FOUND) ALSO INCLUDE FOUR TIES TO THE SECTION CORNER AND DESCRIPTION OF THE TIES.



SET 3/4"X 24" IRON PIPES AT ALL TIE LOCATIONS

BEARINGS REFERENCED TO THE LANGLADE COUNTY COORDINATE SYSTEM



CHARLEY G. BRINKMEIER

(Type or print name) CERTIFY THAT THE CORNER LOCATION SHOWN ON THIS RECORD WAS DETERMINED BY ME OR UNDER MY DIRECTION AND CONTROL AND THAT THIS U.S. PUBLIC LAND SURVEY MONUMENT RECORD IS CORRECT AND COMPLETE TO THE BEST OF MY KNOWLEDGE AND BELIEF.

*Charley G. Brinkmeier*  
SIGNATURE

12-19-11  
DATE