

CERTIFIED LAND CORNER RESTORATION

Index No. R-11

State of Wisconsin }
County of LANGLADE } ss.

History of original corner establishment:

ORIGINAL GOVERNMENT SURVEY NOTES.

I, R. W. NORDIN, do hereby certify that on the 6TH day of JUNE, 1977, I found evidence of the NORTH QUARTER corner of SECTION 28 Township 31, North, Range 12 EAST, Fourth Principal Meridian, as described hereon; and that from this evidence I established a new monument and accessories as described hereon to perpetuate the original location of this corner.

Description of corner evidence found:

RECOVERED STONE WITH CROSS CHISELED IN TOP, REFERENCED THE SAME WITH TIES SHOWN BELOW.

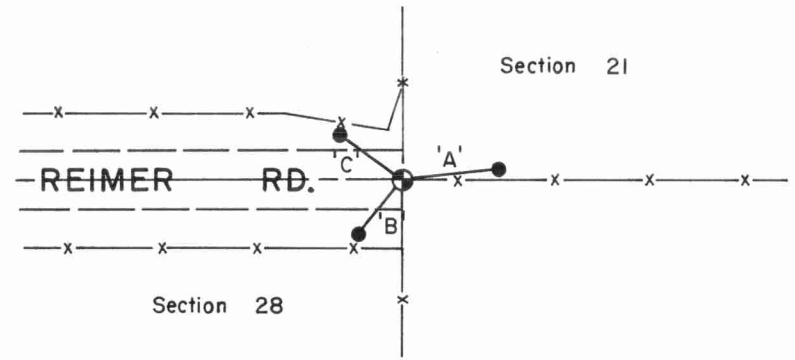
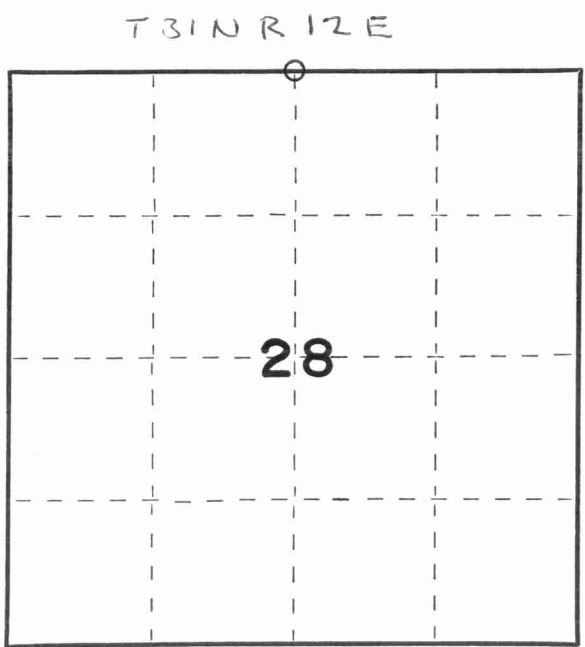


Resident witnesses:

EDWARD SHARDT

DU LOU MOESCH

Description of monument and accessories I established to perpetuate the original location of this corner.



● DENOTES 1" x 24" IRON PIPE SET.

- 'A' = N.83°-08'E. 43.55'
- 'B' = S.38°-35'W. 31.83'
- 'C' = N.55°-18'W. 40.62'



Dated at SHAWANO, Wis., this 21ST day of NOVEMBER, 1977

Signature R. W. Nordin Title LAND SURVEYOR Registration No. S-0791
(County Surveyor, Registered Land Surveyor, or other duly authorized official)

Office of Register of Deeds, County of _____, I hereby certify that the within instrument was filed in this office for record on the _____ day of _____, 19____ at _____ o'clock _____ M.

(Register of Deeds)

By _____ Deputy

○ = Corner monument restored.

FORM 985 H. C. MILLER CO., MILWAUKEE

