

U.S. PUBLIC LAND SURVEY MONUMENT RECORD

(Prepared and as required by S. A-E 7.08 WI Administrative Code)

The CENTER corner of Section 20, T. 31 N., R. 12 E., Langlade County, WI

Corner was: (check all that apply)

- Restored through acceptance of an obliterated evidence location.
- Restored through acceptance of a found perpetuated location.
- Determined to be lost and re-established through proportionate methods.
(Show bearings and distances to PLSS corners used for proportioning.)
- Restored/recovered/reestablished in a location that differs from a previously established position. (Show difference in plan view below.)

3112202020

Check here if additional information is shown on the reverse side of this form.

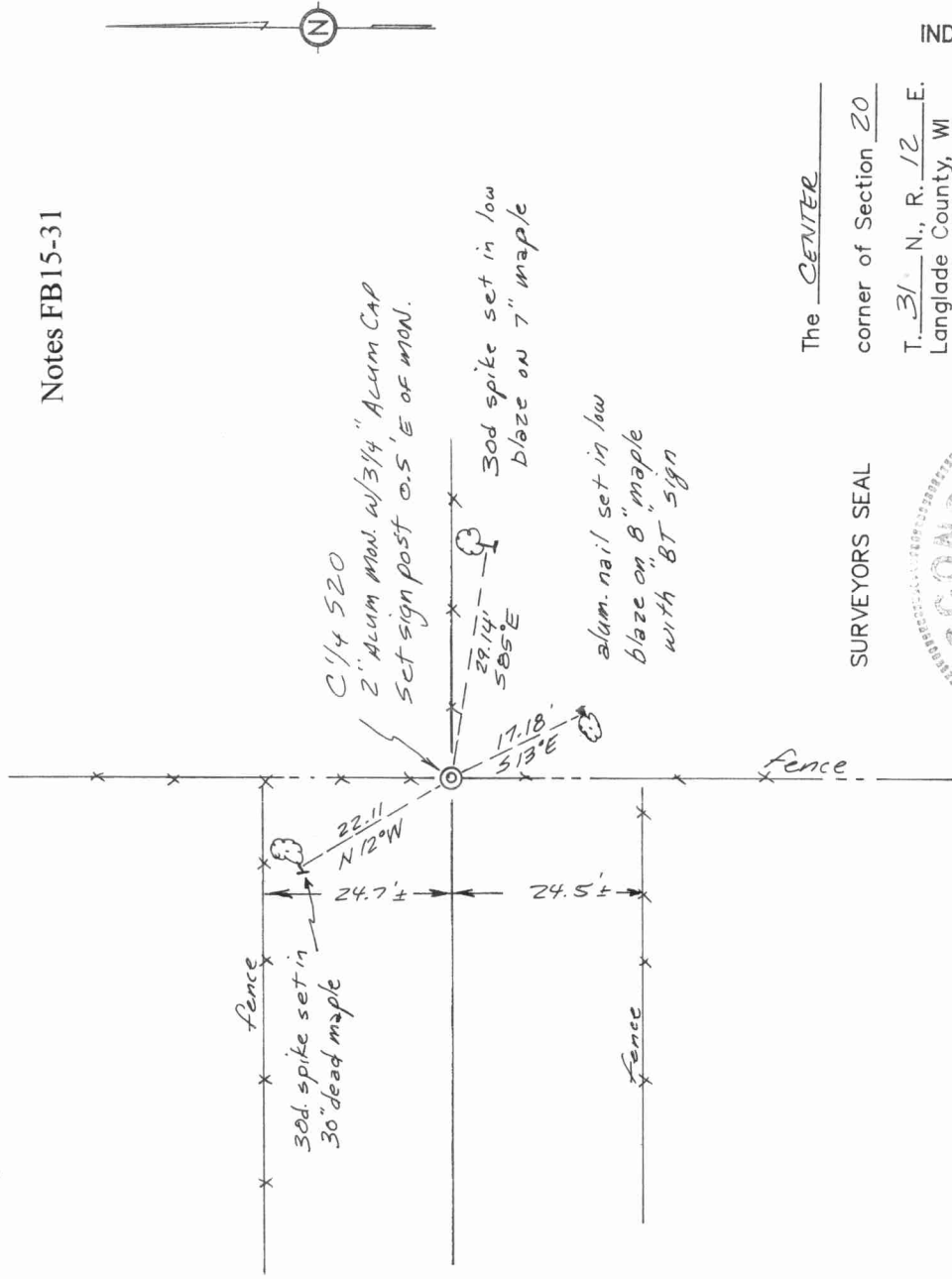
Describe record evidence, recovered physical evidence, occupational evidence, testimonial evidence and all other evidence considered in the recovery/restoration of the corner.

In April of 1987, former surveyor Kelly "set 3" aluminum monument at intersection of 1/4 lines 12' from fence intersection" and set and measured 4 ties. July, 1997, D. Tlusty found Kellys monument. After extensive traverse work along both quarter lines and on the perimeter of Section 20, I re-set this corner at the intersection of fence lines. All of the interior sixteenth corner fence lines match this position very well. I believe that this section was subdivided at one time, but I don't have the written record.

Physical description of the monument set:

For the corner, I removed Kellys monument and re-stamped it and re-set it as described above.

Describe the accessories used to perpetuate the location of the corner. Include a plan view drawing and indicate accessories found/set. Describe measuring point on bearing trees. Show any topographic features that would aid in future recovery of the corner.



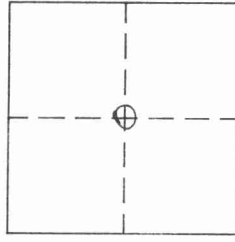
Notes FB15-31

SURVEYORS SEAL

The CENTER corner of Section 20 T. 31 N., R. 12 E. Langlade County, WI



INDEX No. P7



O = Location of corner

I, David E. Tlusty, Langlade County Surveyor certify that the corner location shown on this record was determined by me or under my direction and control and that this U.S. Public Land Survey Monument Record is correct and complete to the best of my knowledge and belief.

David E. Tlusty 8/27/98
Signature Date

WISCONSIN ADMINISTRATIVE CODE

A-E 7.07 Monuments.

The type and position of monuments to be set on any survey shall be determined by the nature of the survey, the permanency required, the nature of the terrain, the cadastral features involved, and the availability of material.

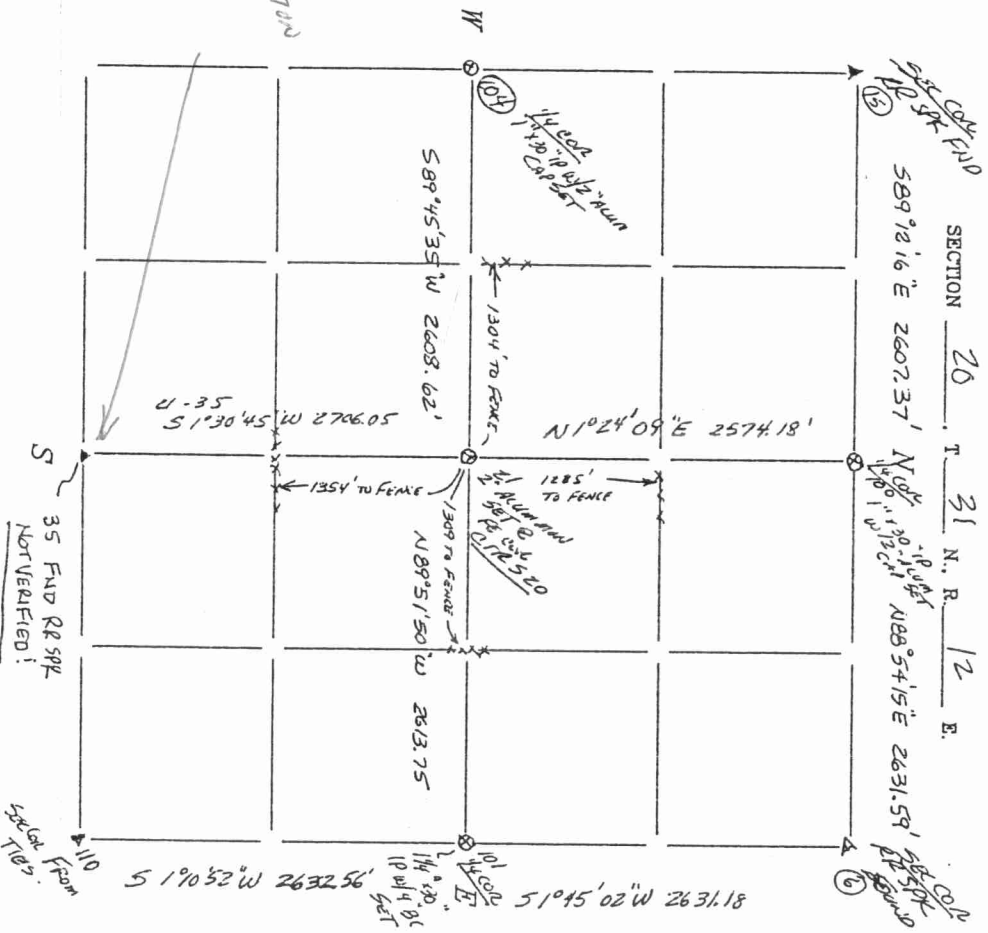
History: Cr. Register, February, 1987, No. 374, eff. 3-1-87.

A-E 7.08 U.S. public land survey monument record.

- (1) **WHEN MONUMENT RECORD REQUIRED.** A U.S. public land survey monument shall be prepared and filed with the county surveyor's office as part of any land survey which includes or requires the perpetuation, restoration, reestablishment or use of a U.S. public land survey corner, and:
- (a) There is no U.S. public land survey monument record for the corner on file in the office of the county surveyor or the register of deeds for the county in which the corner is located; or,
 - (b) The land surveyor who performs the survey accepts a location for the U.S. public land survey corner which differs from that shown on a U.S. public land survey monument record filed in the office of the county surveyor or register of deeds for the county in which the corner is located; or,
 - (c) The witness ties or U.S. public land survey monument reference in an existing U.S. public land survey monument record have been destroyed or disturbed.
- (2) **FORM REQUIRED.** A U.S. public land survey monument record shall be prepared on the board-approved form or on a form substantially the same as the board-approved form which includes all the elements required by this section. A form used for this purpose shall be entitled, "U.S. Public Land Survey Monument Record".

Note: A copy of the board-approved form is available from the Department of Regulation and Licensing, Bureau of Business and Design Professions, 1400 East Washington Avenue, P.O. Box 8935, Madison, Wisconsin 53708.

- (3) **MONUMENT RECORD REQUIREMENTS.** A U.S. public land survey monument record shall show the location of the corner and shall include all of the following elements:
- (a) The identity of the corner, as referenced to the U.S. public land survey system;
 - (b) A description of any record evidence, monument evidence, occupational evidence, testimonial evidence or any other material evidence considered by the surveyor, and whether the monument was found or placed;
 - (c) Reference ties to at least 4 witness monuments. Witness monuments shall be concrete, natural stone, iron, bearing trees or other equally durable material, except wood other than bearing trees;
 - (d) A plan view drawing depicting the relevant monuments and reference ties which is sufficient in detail to enable accurate relocation of the corner monument if the corner monument is disturbed;
 - (e) A description of any material discrepancy between the location of the corner as restored or reestablished and the location of that corner as previously restored or reestablished;
 - (f) Whether the corner was restored through acceptance of an obliterated evidence location or a found perpetuated location;
 - (g) Whether the corner was reestablished through lost-corner-proportionate methods;
 - (h) The directions and distances to other public land survey corners which were used as evidence or used for proportioning in determining the corner location; and,
 - (i) The stamp and signature or seal and signature of the land surveyor under whose direction and control the corner location was determined and a statement certifying that the U.S. public land survey monument record is correct and complete to the best of his or her knowledge and belief.
- History: Cr. Register, February, 1987, No. 374, eff. 3-1-87; am. (1) and (3) (c), Register, May, 1989, No. 401, eff. 6-1-89.



SEE MAP 10245 FOR REVISED LOCATION OF S 1/4 COR.

35 FND R259K NOT VERIFIED!

58'6\"/>