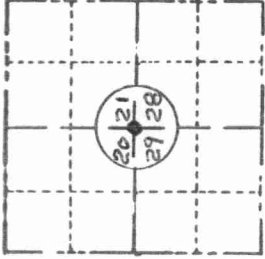


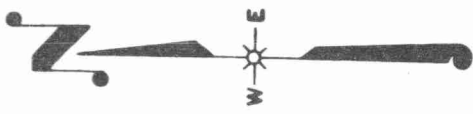
FIELD SURVEY NOTES  
**PRESERVATION OF LANDMARKS**  
 (Pursuant to Section 59.635(7) Wisconsin Statutes  
 E-D-707-69

State of Wisconsin / Department of Transportation

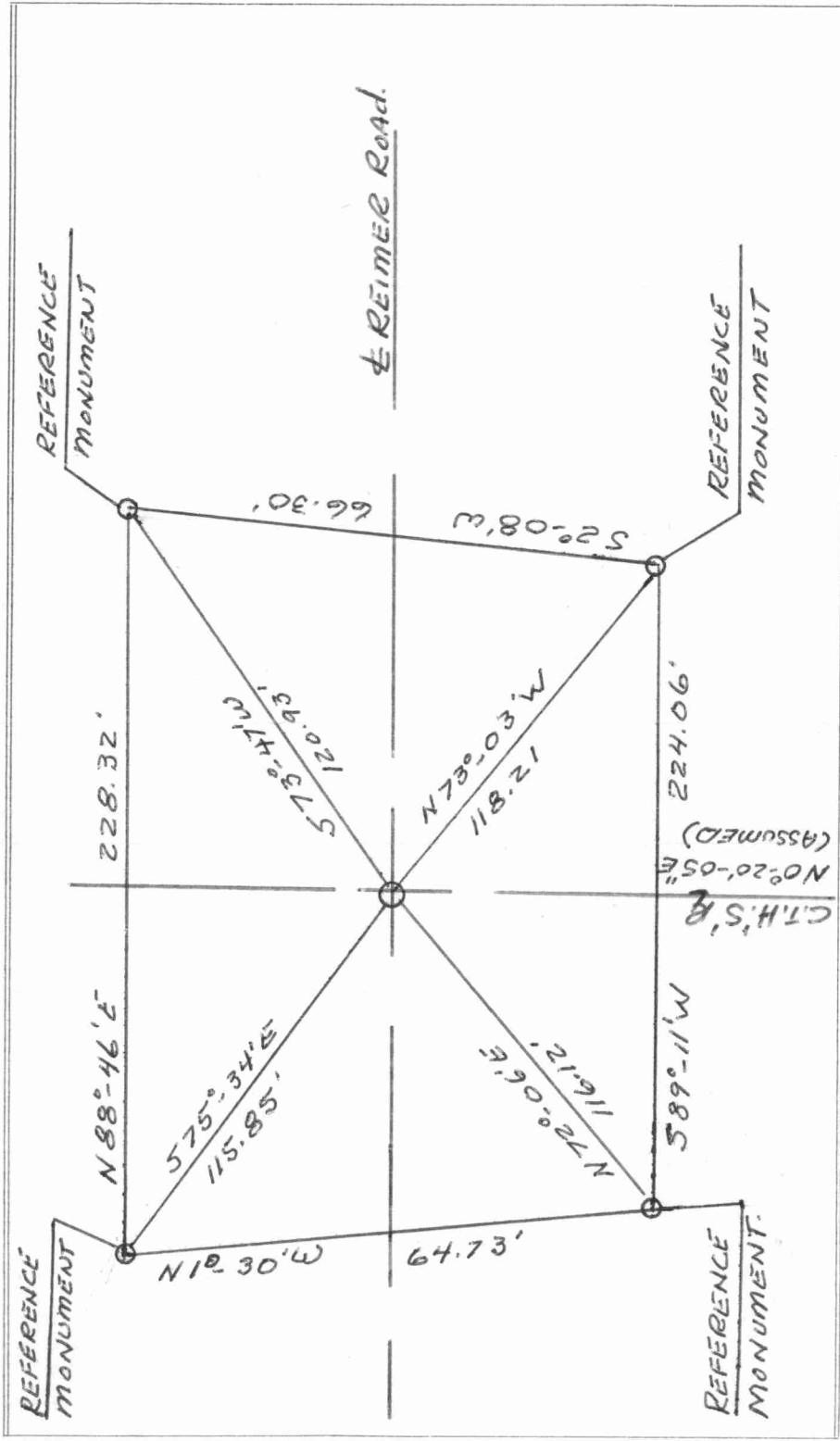
COUNTY	LANGLADE		
TOWN	POLAR		
HIGHWAY	C.T.H.'S'		
SECTION	TOWNSHIP	RANGE	
29, 21, 28, 29	31 N	12 E	
TYPE OF LANDMARK			
1 1/2" IRON PIPE			



**LOCATION SKETCH**  
 (Location of landmark indicated by "x")



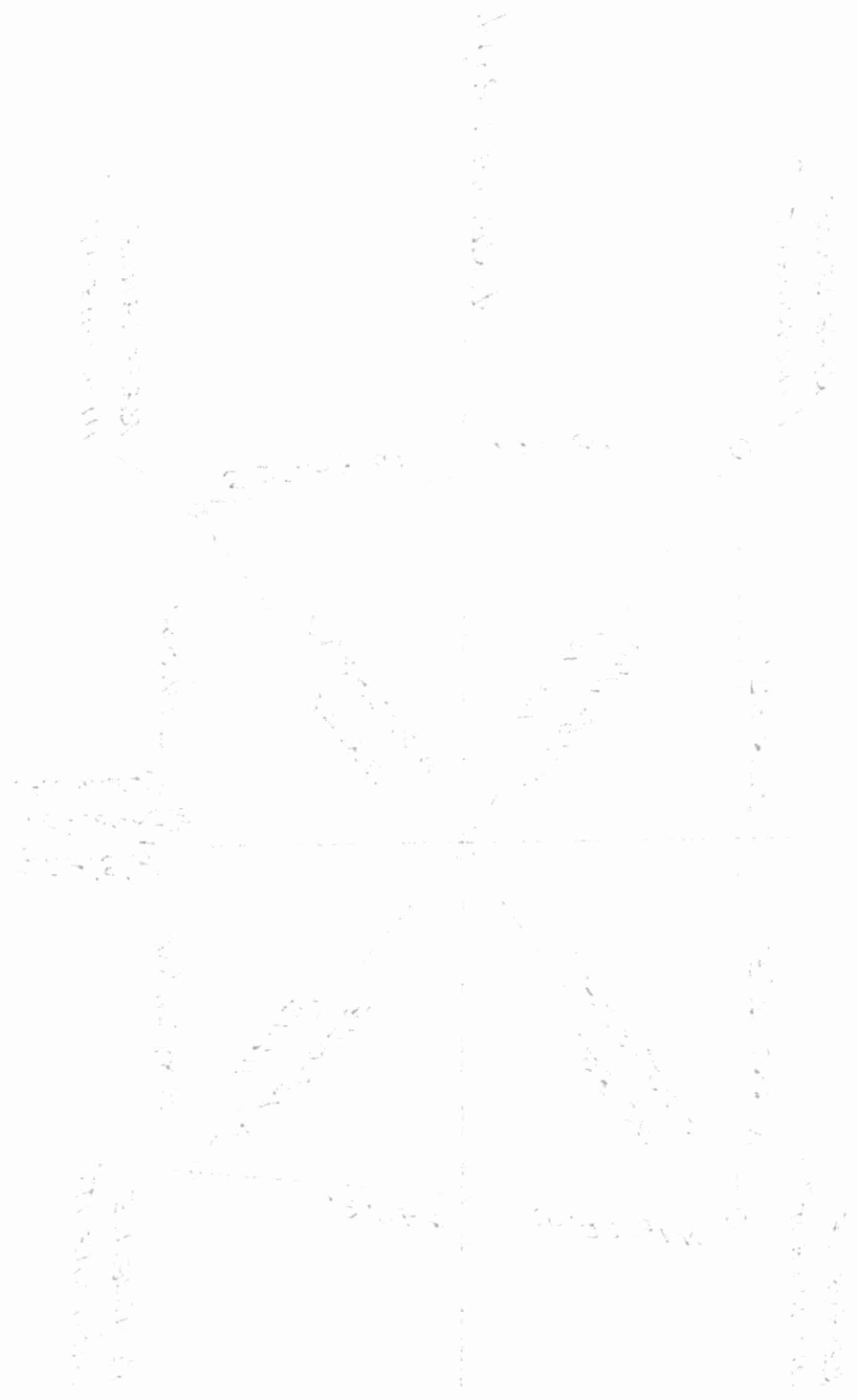
This space for copy of field notes or ties to the above described landmarks



FILED UNDER PROJECT	9381-6-70	
DISTRICT OFFICE NUMBER	CITY	COUNTY
7	RHINELANDER	ONEIDA
LOCATED OR ESTABLISHED BY		
NAME JACK WALLIN		
TITLE SURVEY CREW CHIEF		
DATE 6-3-80		

COUNTY CLERK'S OFFICE	WISCONSIN
COUNTY OF	SS
DATE RECEIVED FOR RECORD	DATE COPY SENT TO COUNTY SURVEYOR
June 17, 1980	6-20-80
SIGNATURE OF COUNTY CLERK	W. S. Puley
Norman G. Gijha	

1. Control - Control  
 2. Control - Control  
 3. Control - Control  
 4. Control - Control



1. Control - Control  
 2. Control - Control  
 3. Control - Control  
 4. Control - Control

100