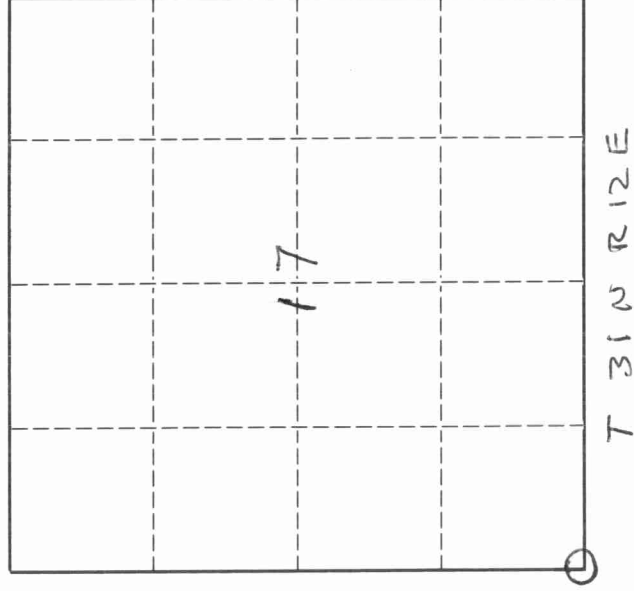


U. S. PUBLIC LAND SURVEY MONUMENT RECORD

INSTRUCTIONS:

This record shall show the location of the corner and shall include all of the following nine elements (a through i).

- (a) Identify the corner by reference to the U.S. public land survey system.
- O = Corner monument restored.



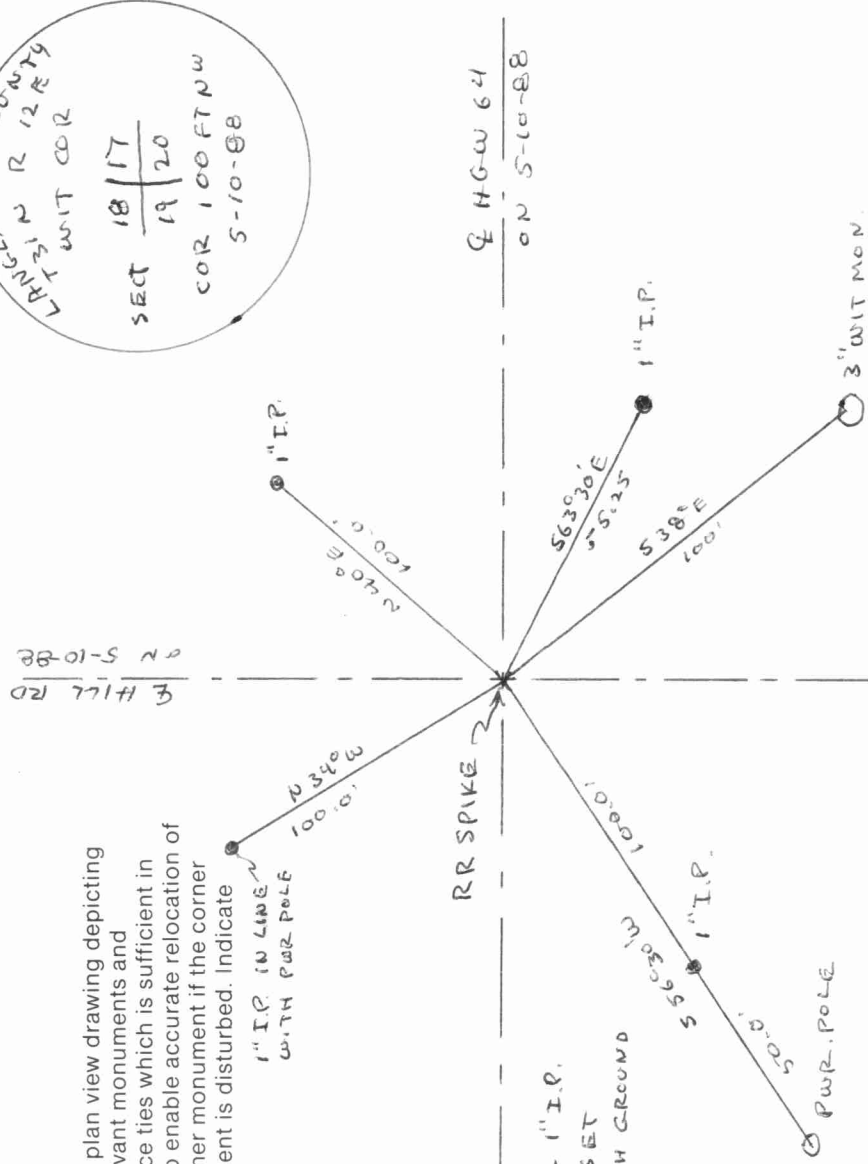
ORIGINAL CORNER ESTABLISHED BY JAMES MCBRIDE IN NOV. 1857
 CORNER PERPETUATED BY G. RADKE IN DEC 1977 ON SUB DIVISION SECT 19 T31N R12E

?

- (b) Describe any record evidence, monument evidence, occupational evidence, testimonial evidence or any other material evidence you considered, and whether the monument was found or placed.

SET WITNESS MONUMENTS TO CLEAR HIGHWAY CONSTRUCTION

- (c) In the plan view drawing below, provide reference ties to at least 4 witness monuments, or, if the location is within a municipality, to at least 2 witness monuments. (Witness monuments shall be made of concrete, natural stone, iron or other equally durable material.) Describe witness monuments.



NOTE: ALL 1" I.P. WIT. COR. SET FLUSH WITH GROUND

