

4/31/21/16 0020 2011

# LANGLADE COUNTY U.S. PUBLIC LAND CORNER RESTORATION

The South Quarter corner of Section 16, T. 31 N., R. 12 E., Langlade County, WI.

**Corner was: (check all that apply)**

- Restored through acceptance of an obliterated evidence location.
- Restored through acceptance of a found perpetuated location.
- Determined to be lost and re-established through proportionate methods.
- Show bearings and distances to PLSS corners used for proportioning, and show original distances).
- Restored/recovered/re-established in a location that differs from a previously established position.
- (Show difference in plan view below).
- Check here if additional information is shown on the reverse side of this form.

4311216 0020

**Describe record evidence, recovered physical evidence, occupational evidence, testimonial evidence and all other evidence considered in the recovery/restoration of the corner.**

The original corner was established in 1857 by James McBride. Original bearing trees: fir, 8", N 5° W, 33 links and a birch, 7", N 53° W, 20 links. In 1887, B.F. Dorr (in FB 140 - 56) surveyed the N-S quarter line in Section 16 as 80.00 chains. In 1991, Wayne Dobbatz, surveyor, "Found PK nail in second layer of blacktop. Agrees with occupation to north and south". He set reference ties: two trees, a nail in pavement and an aluminum reference monument 30.00 feet to the north. 9/21/11 D. Tlusty, county surveyor, found a 1" iron pipe, 0.35' in paved road. The bearing trees by Dobbatz are grown over and un-useable. As the pipe found works exactly with the 30.00' distance to the reference monument to the north, I accept it as evidence of the Dobbatz corner location and re-tied it as shown below.

**Physical description of the monument set:**

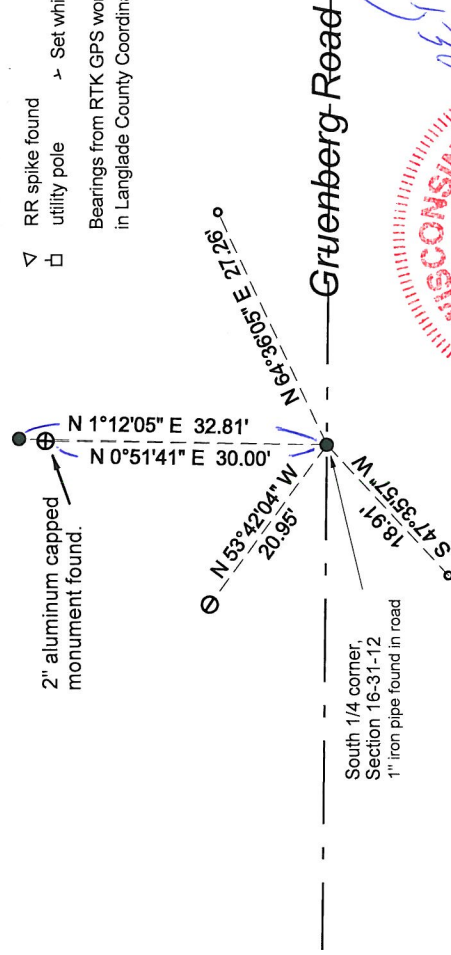
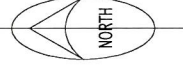
I left the existing iron pipe in the road.

**Describe the accessories used to perpetuate the corner. Include a plan view drawing and accessories found/set. Describe measuring point on bearing trees. Show any topographic features that would aid in future recovery of the corner.**

**LEGEND**

- 3/4" x 30" rebar set
  - 1" iron pipe found
  - 1" x 15" iron pipe set
  - RR spike found
  - utility pole
  - Set white vinyl sign post
- Bearings from RTK GPS work in Langlade County Coordinate System (LCCS).

Field book: FB15-70

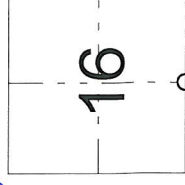


Langlade County Coordinates based on static GPS survey work from Polar C GPS monument and using published NAD83(91) values on said monument.

N	E	description
348005.11	659398.38	static gps on rebar set NE wm fb15-70
348004.40	659439.90	static gps ip set NW wm fb15-70
347992.70	659415.27	1/4x ip fnd s1/4x 16-31-12

Index No.

N11 31-12



O = corner perpetuated

The South Quarter corner of Section 16, T. 31 N., R. 12 E., Langlade County, WI

I, David E. Tlusty, Registered Land Surveyor, as Langlade County Surveyor, certify that the corner location on this record was determined by me and that this U.S. Public Land Survey Monument Record is correct to the best of my knowledge and belief.