

LANGLADE COUNTY U.S. PUBLIC LAND CORNER RESTORATION

The Center of Section 15, T. 31 N., R. 12 E., Langlade County, WI.

4311215 2020

Corner was: (check all that apply)

- Restored through acceptance of an obliterated evidence location.
- Restored through acceptance of a found perpetuated location.
- Determined to be lost and re-established through proportionate methods.
- Show bearings and distances to PLSS corners used for proportioning, and show original distances).
- Restored/recovered/re-established in a location that differs from a previously established position.
- (Show difference in plan view below).
- Check here if addition information is shown on the reverse side of this form.

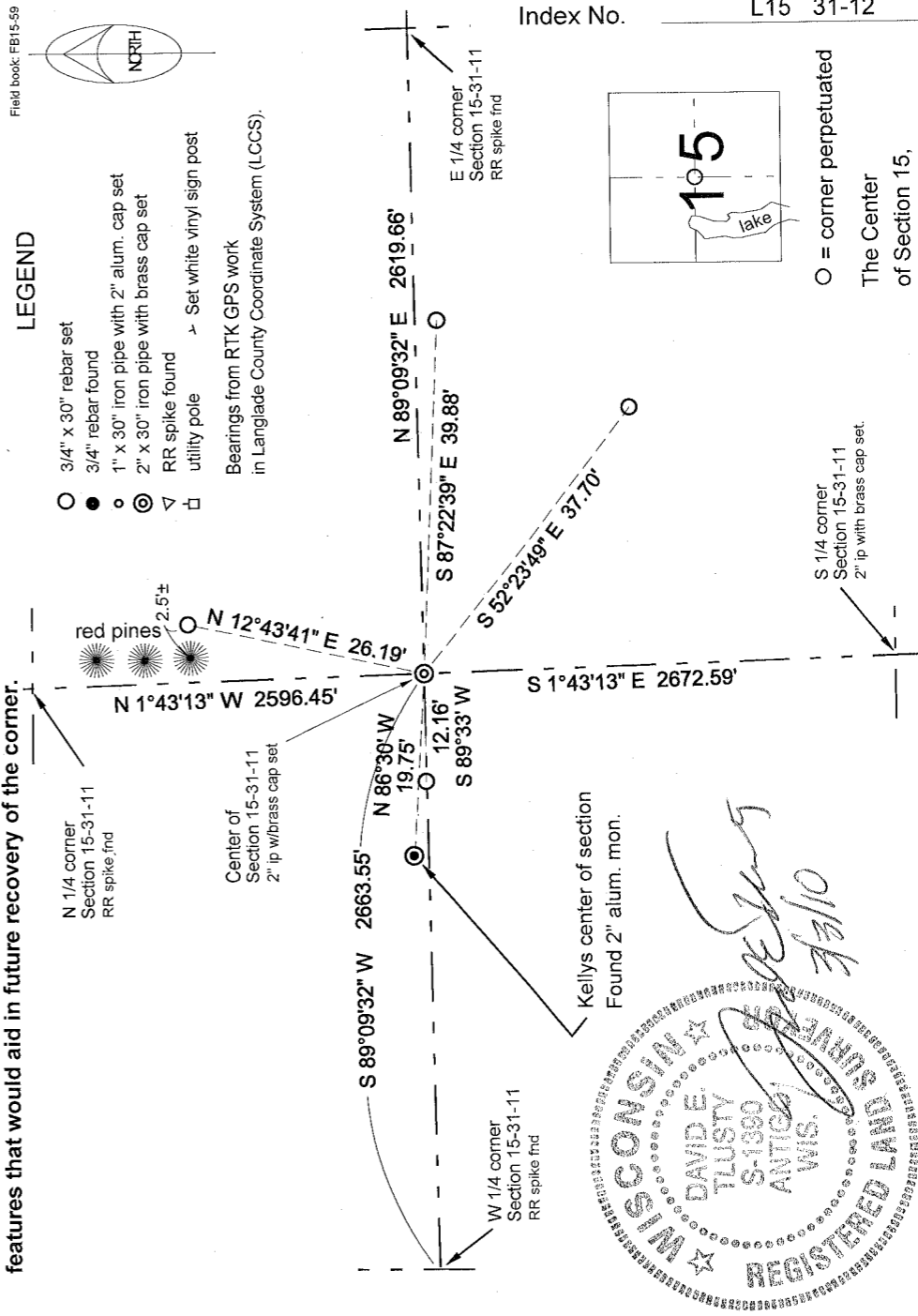
Describe record evidence, recovered physical evidence, occupational evidence, testimonial evidence and all other evidence considered in the recovery/restoration of the corner.

This corner was not monumented in the original government survey. In 1988, former surveyor Kelly stated "No evidence of the original corner installation was found. Intersection of 1/4 lines agreed with occupation lines within reason". In 2001, I corrected the South 1/4 corner of Section 15 and then on 11/06/02 I set a new monument for the center of section. The corner now falls in line with a fence line field line from north of STH 64, north to the North 1/4 corner.

Physical description of the monument set:

I set a 2" x 30" iron pipe with brass cap for the corner.
Set white vinyl sign post, 0.7' North of corner monument.

Describe the accessories used to perpetuate the corner. Include a plan view drawing and accessories found/set. Describe measuring point on bearing trees. Show any topographic features that would aid in future recovery of the corner.



I, David E. Tlusty, Registered Land Surveyor, as Langlade County Surveyor, certify that the corner location on this record was determined by me and that this U.S. Public Land Survey Monument Record is correct to the best of my knowledge and belief.