

# U.S. PUBLIC LAND SURVEY MONUMENT RECORD

(Prepared and as required by S. A-E 7.08 WI Administrative Code)

The EAST 1/4 corner of Section 15, T. 31 N., R. 12 E., Langlade County, WI  
 Corner was (check all that apply)

- Restored through acceptance of an obliterated evidence location.
- Restored through acceptance of a found perpetuated location.
- Determined to be lost and re-established through proportionate methods. (show bearings and distances to PLSS corners used for proportioning.)
- Restored/recovered/re-established in a location that differs from a previously established position. (Show difference in plan view below.)
- Check here if additional information is shown on the reverse side of this form.

**Describe record evidence, recovered physical evidence, occupational evidence, testimonial evidence, and all other evidence considered in the recovery/restoration of the corner.**

1857 - Original corner established by J. McBride.

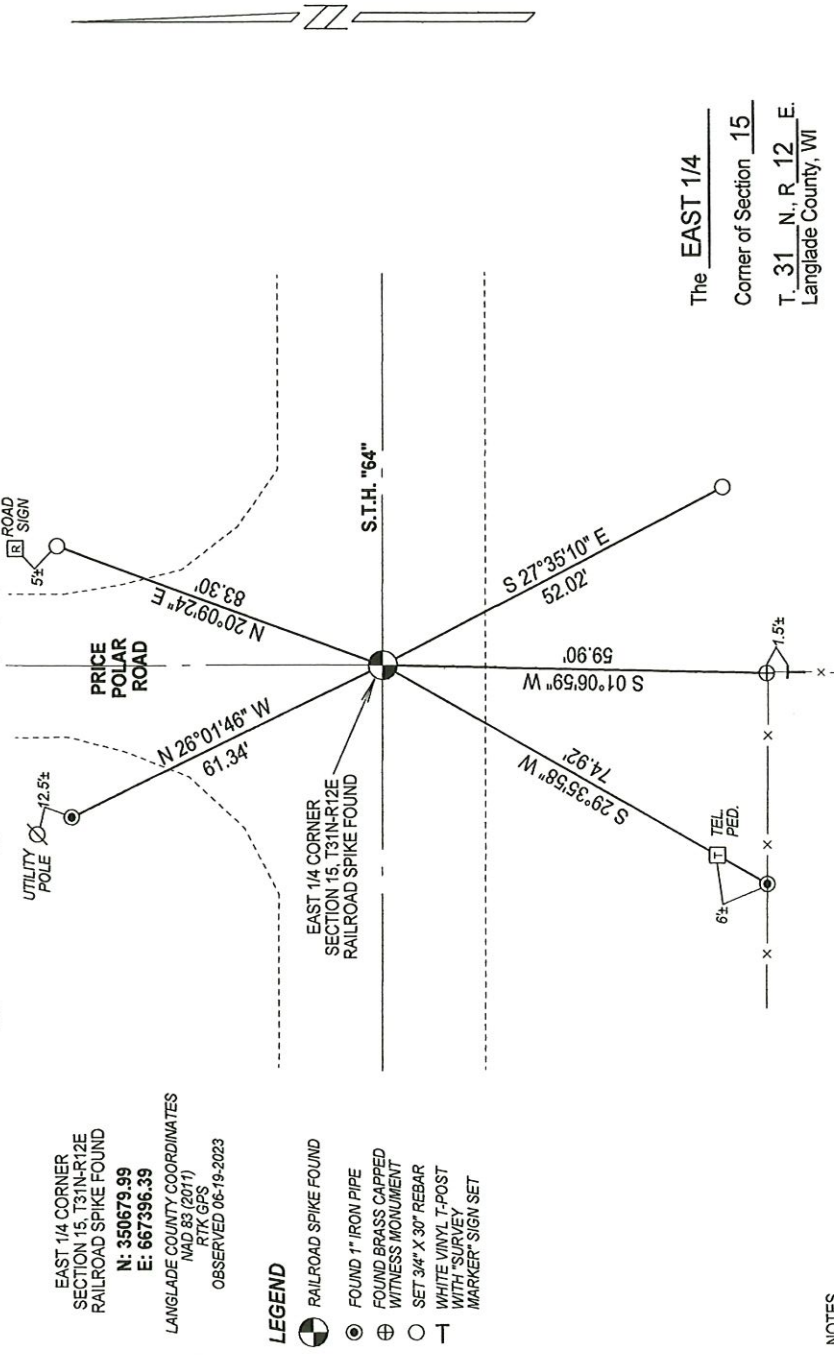
1988 - William Kelly found railroad spike at corner location. References corner being perpetuated by Hutchinson in 1906 and Radke in 1978. Kelly "set new witness monuments to clear highway construction." Kelly made ties, and filed tie sheet.

2023 - I found the existing railroad spike 2" below the road surface in good condition. I verified corner location from existing ties by Kelly and made additional ties.

**Physical description of the monument set:**

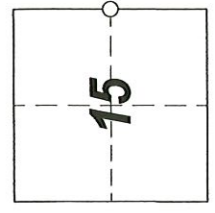
Accepted railroad spike as corner location and tied out as shown below.

Describe the accessories used to perpetuate the location of the corner. Include a plan view drawing and indicate accessories found/set. Describe measuring point on bearing trees. Show any topographic features that would aid in future recovery of the corner.



NOTES  
 - SKETCH NOT DRAWN TO SCALE.  
 - TIE BEARINGS SHOWN ARE LANGLADE COUNTY GRID BEARINGS.  
 - ALL TIES MEASURED ELECTRONICALLY WITH TOTAL STATION.

The EAST 1/4  
 Corner of Section 15  
 T. 31 N., R. 12 E.  
 Langlade County, WI



○ = Location of corner



I, Michael J. Hoffman certify that the corner location shown on this record was determined by me or under my direction and control and that this U.S. Public Land Survey Monument Record is correct and complete to the best of my knowledge and belief.

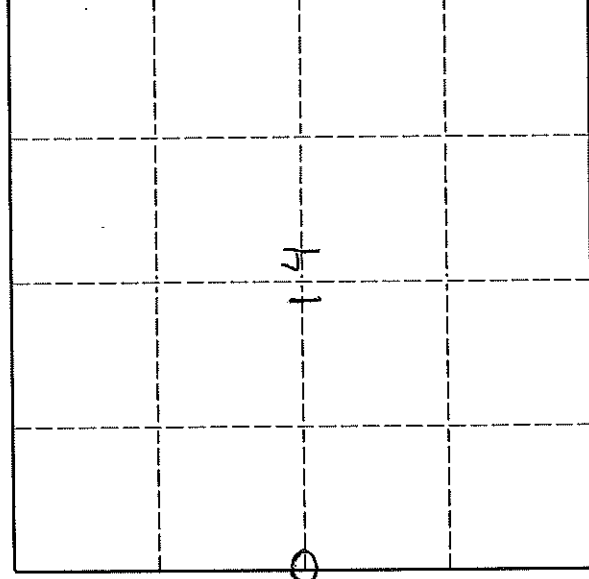
Michael J. Hoffman 09-01-2023 Date  
 Signature

# U. S. PUBLIC LAND SURVEY MONUMENT RECORD

**INSTRUCTIONS:**

This record shall show the location of the corner and shall include all of the following nine elements (a through i).

- (a) Identify the corner by reference to the U.S. public land survey system.
- O = Corner monument restored.

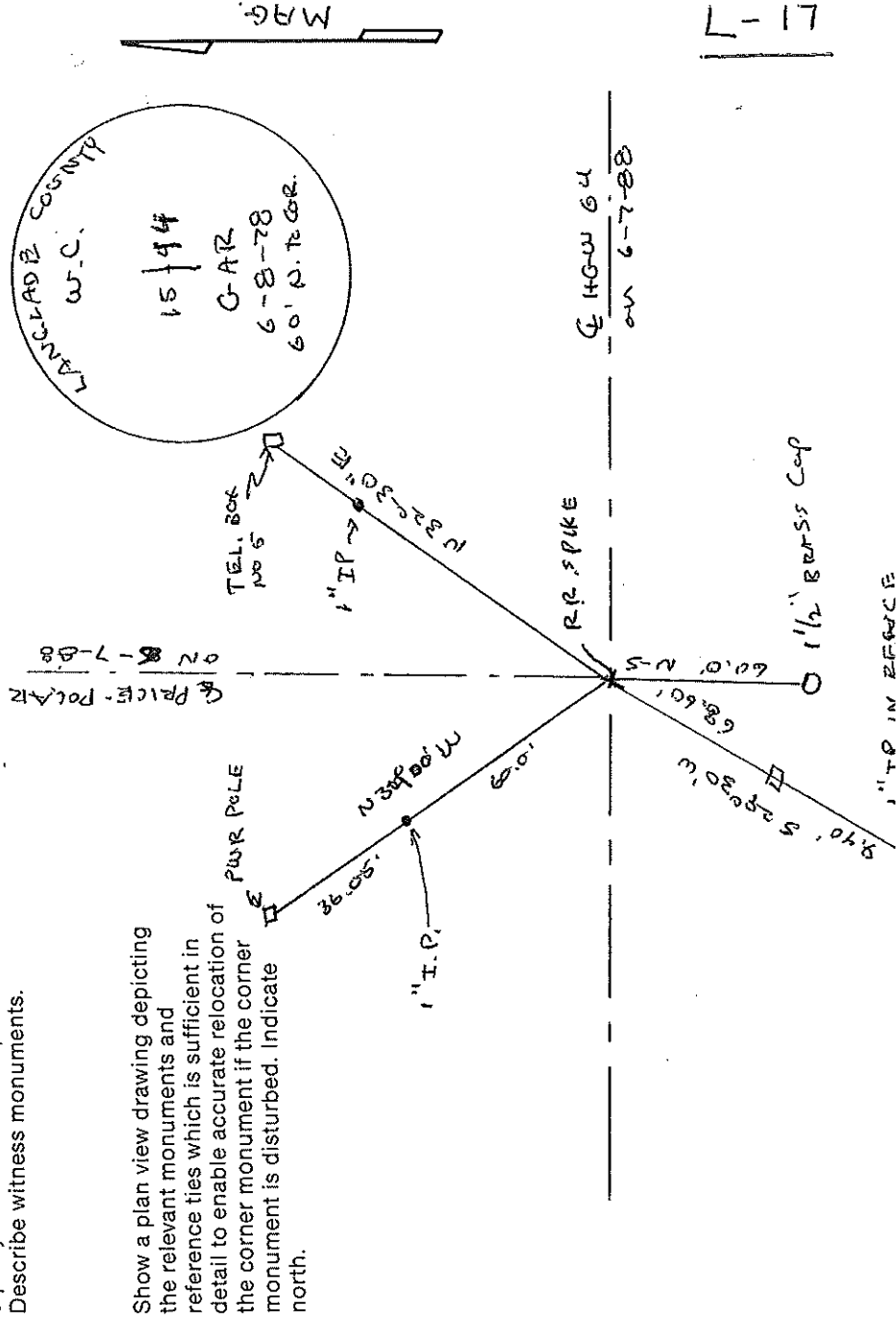


ORIGINAL CORNER ESTABLISHED BY JAMES AD BRIDGE IN NOV. 1857  
 CORNER PERPETUATED BY M. HUTCHINSON IN MAY 1906  
 CORNER PERPETUATED BY G. RADKE FROM HUTCHINSON NOTES IN JUNE 1978

- (b) Describe any record evidence, monument evidence, occupational evidence, testimonial evidence or any other material evidence you considered, and whether the monument was found or placed.

SET NEW WITNESS MONUMENTS TO CLEAR HIGHWAY CONSTRUCTION

- (c) In the plan view drawing below, provide reference ties to at least 4 witness monuments, or, if the location is within a municipality, to at least 2 witness monuments. (Witness monuments shall be made of concrete, natural stone, iron or other equally durable material.) Describe witness monuments.



- (d) Show a plan view drawing depicting the relevant monuments and reference ties which is sufficient in detail to enable accurate relocation of the corner monument if the corner monument is disturbed. Indicate north.

Describe any material discrepancy between the location of the corner as restored or reestablished and the location of that corner as previously restored or reestablished by distance and direction. Show the discrepancy on the plan view drawing under (d), above. Show the distances between the corner as previously restored or reestablished and (1) the corner as restored or reestablished, and (2) to at least 2 of the witness monuments shown on the drawing in (d), above.

NONE

(f) Was the corner restored through acceptance of (1) an obliterated evidence location, or, (2) a found perpetuated location.?

(2)

(g & h) Was the corner reestablished through lost corner proportionate methods? If so, show the method, including the directions and distances to other public land survey corners used as evidence or used for proportioning in determining the corner location.

(i) I, WILLIAM F. KELLY

(type or print name)

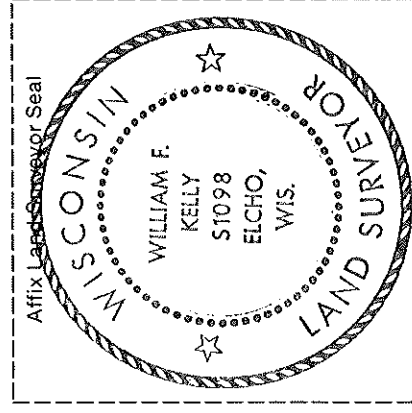
certify that the corner location shown on this record was determined by me or under my direction and control and that this U.S. Public Land Survey Monument Record is correct and complete to the best of my knowledge and belief.

William F. Kelly

Signature

6-8-88

Date



CERTIFIED LAND CORNER RESTORATION

History of original corner establishment:

Old survey notes and Highway records

State of Wisconsin }  
County of Langlade } ss.

I Gary A. Radtke do hereby certify that on the 8th day of June, 19 78, I found evidence of the W<sup>1</sup>/<sub>4</sub> Corner of Section 14 Township 31 North, Range 12 East, Fourth Principal Meridian, as described hereon; and that from this evidence I established a new monument and accessories as described hereon to perpetuate the original location of this corner.

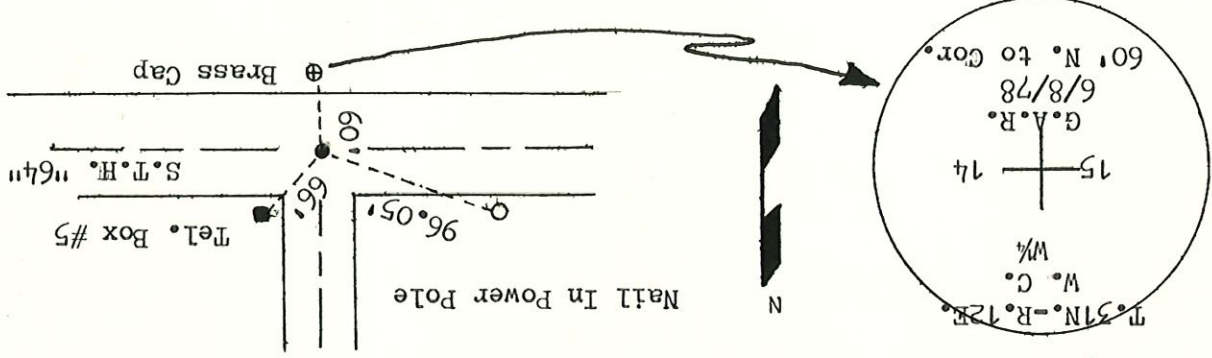
Resident witnesses:

.....  
.....  
.....

Description of corner evidence found: None



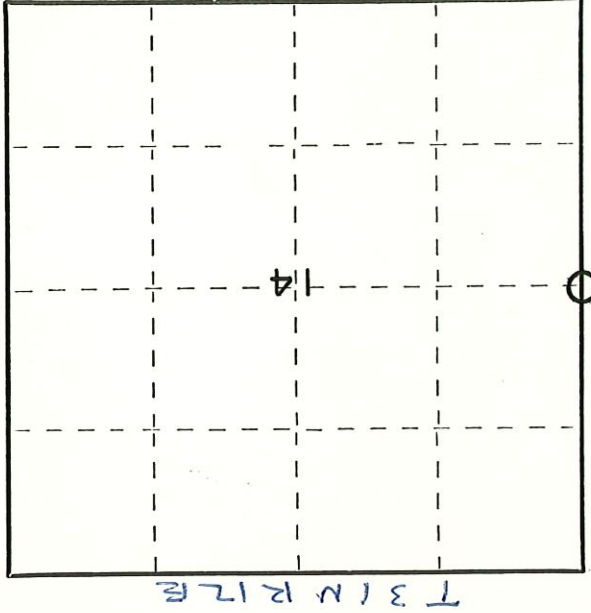
Description of monument and accessories I established to perpetuate the original location of this corner.



Dated at Antigo Wis., this 29th day of June, 19 78

Signature: *Gary A. Radtke*  
Title: Registered Land Surveyor  
Registration No. S-1248  
(County Surveyor, Registered Land Surveyor, or other duly authorized official)  
Office of Register of Deeds, County of Langlade, Wisconsin  
Instrument was filed in this office for record on the \_\_\_\_\_ day of \_\_\_\_\_, 19\_\_\_\_ at \_\_\_\_\_ o'clock \_\_\_\_\_ M.

By: \_\_\_\_\_  
(Register of Deeds)  
Deputy



○ = Corner monument restored.