

# LANGLADE COUNTY U.S. PUBLIC LAND CORNER RESTORATION

**The East Meander corner on the line between Section 15 & 22, T. 31 N., R. 12 E., Langlade County, WI.**

**Corner was: (check all that apply)**

3112150022

- Restored through acceptance of an obliterated evidence location.
- Restored through acceptance of a found perpetuated location.
- Determined to be lost and re-established through proportionate methods.
- Show bearings and distances to PLSS corners used for proportioning, and show original distances).  
(Show difference in plan view below).
- Restored/recovered/re-established in a location that differs from a previously established position.
- Check here if additional information is shown on the reverse side of this form.

**Describe record evidence, recovered physical evidence, occupational evidence, testimonial evidence and all other evidence considered in the recovery/restoration of the corner.**

The original corner was established in 1857 by James McBride. Original bearing trees: elm, 10", N31°E, 6 links (3.96') and a hemlock, 10", S 15° W, 42 lks (27.7'). I accept a 34" elm, lying on the ground, as evidence of the original elm BT at re-set the corner, S 31° W, 3.96' from the center of the elm stump remains. This point is at the original shoreline location as evidenced by the old lake bank and it's within 10' E-W of a proportionate location This point is also in good alignment with a line from the SW corner of Section 15, extended East through the West MC.

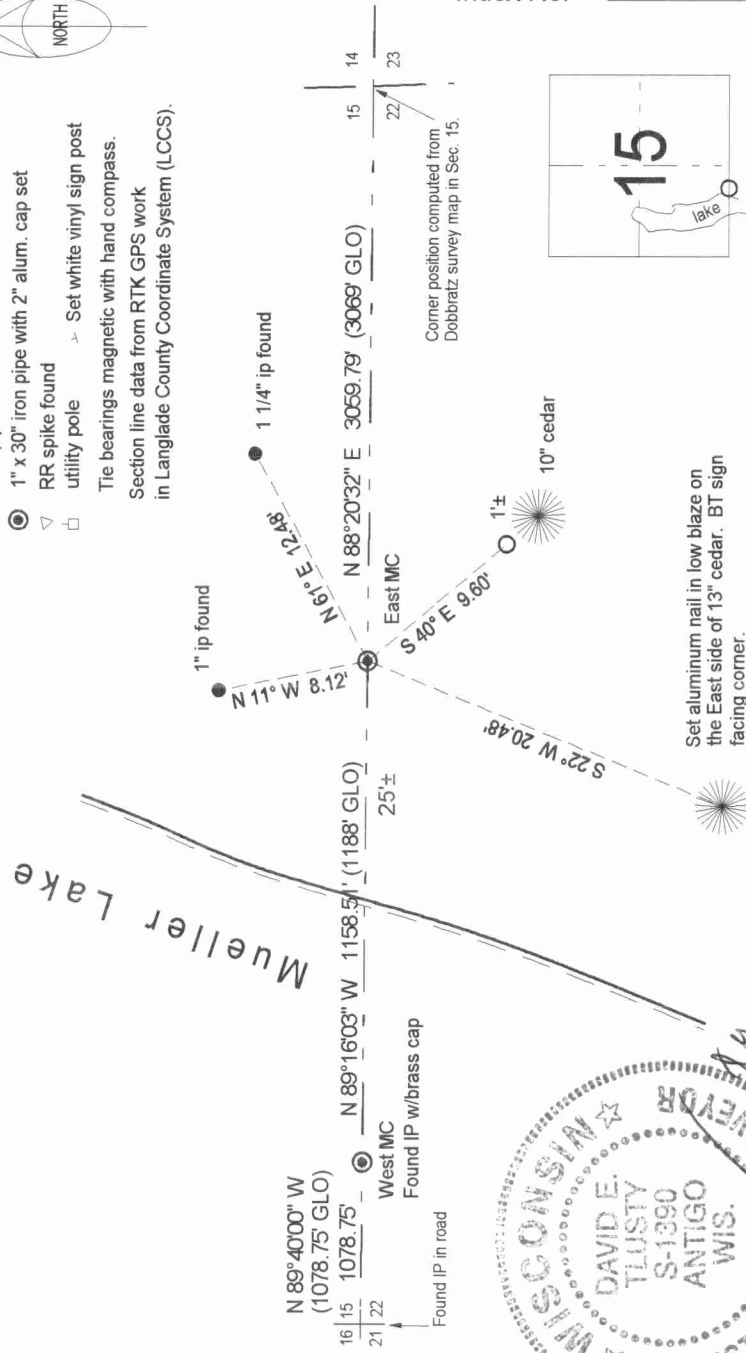
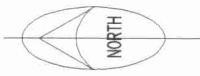
**Physical description of the monument set:**

I set a 1" x 30" iron pipe with 2" aluminum cap for the corner.  
Set white vinyl sign post 0.5' west of monument.

**Describe the accessories used to perpetuate the corner. Include a plan view drawing and accessories found/set. Describe measuring point on bearing trees. Show any topographic features that would aid in future recovery of the corner.**

- LEGEND**
- 3/4" x 30" rebar set
  - iron pipe found
  - ⊙ 1" x 30" iron pipe with 2" alum. cap set
  - ▽ RR spike found
  - utility pole → Set white vinyl sign post
  - Tie bearings magnetic with hand compass.
  - Section line data from RTK GPS work in Langlade County Coordinate System (LCCS).

Field book: FB15-80



Index No. N14-15 30-11

○ = corner perpetuated  
The East MC, south line of Section 15, T. 31 N., R. 12 E., Langlade County, WI

I, David E. Tlusty, Registered Land Surveyor, as Langlade County Surveyor, certify that the corner location on this record was determined by me and that this U.S. Public Land Survey Monument Record is correct to the best of my knowledge and belief.

