

LANGLADE COUNTY U.S. PUBLIC LAND CORNER RESTORATION

The South Quarter corner of Section 15, T. 31 N., R. 12 E., Langlade County, WI.

Corner was: (check all that apply)

3112150020

- Restored through acceptance of an obliterated evidence location.
- Restored through acceptance of a found perpetuated location.
- Determined to be lost and re-established through proportionate methods.
 - Show bearings and distances to PLSS corners used for proportioning, and show original distances).
- Restored/recovered/re-established in a location that differs from a previously established position.
- (Show difference in plan view below).
- Check here if additional information is shown on the reverse side of this form.

Describe record evidence, recovered physical evidence, occupational evidence, testimonial evidence and all other evidence considered in the recovery/restoration of the corner.

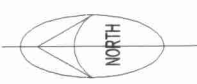
The original corner was established in 1857 by James McBride. Original bearing trees: hemlock, 8", N57°W, 16 links and a birch, 14", S37°E, 16 lks. In 1981, Tom Arnott "Set monument on line from southwest corner section (15, 16, 21 & 22), the meander corner on the west line of Mueller Lake and deeds in the area". In 1993, Wayne Dobbatz found Arnotts corner and added ties. 2001 D. Tlusty could not justify the position of the corner set by T. Arnott. I re-set this corner by single proportionate measurement between the MC on the East side of Mueller Lake, and the SE corner of Section 15.

Physical description of the monument set:

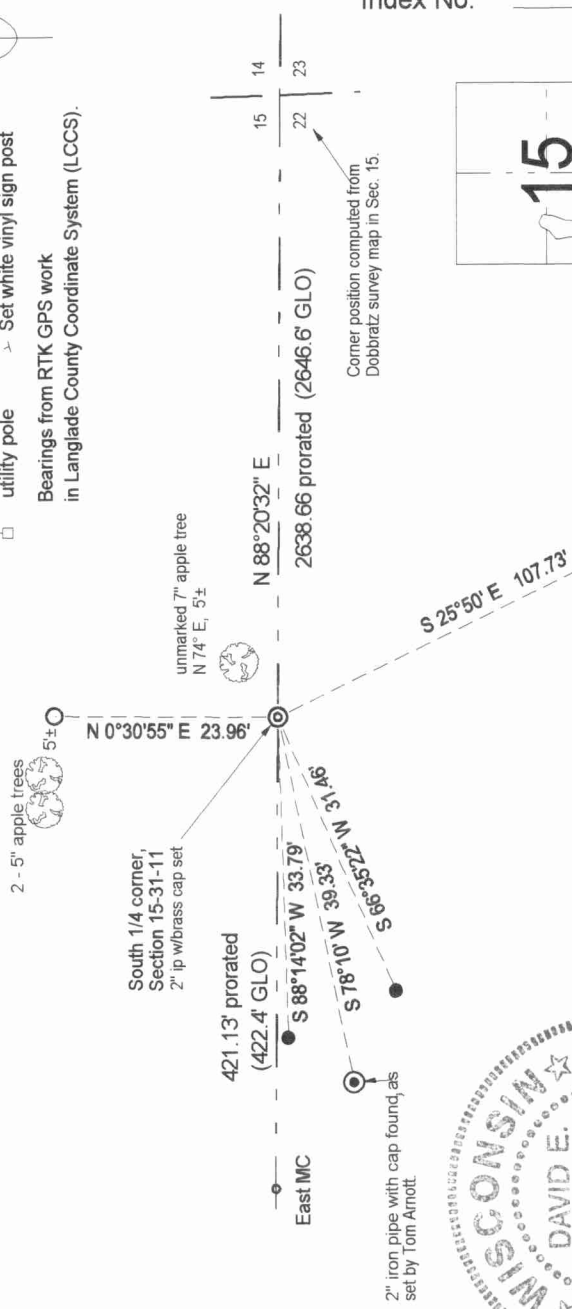
I set a 2" x 30" iron pipe with brass cap for the corner.
Set white vinyl sign post, 0.7' North of corner monument.

Describe the accessories used to perpetuate the corner. Include a plan view drawing and accessories found/set. Describe measuring point on bearing trees. Show any topographic features that would aid in future recovery of the corner.

Field book: FB15-62

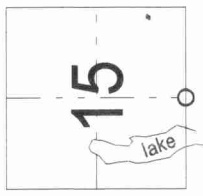


- 3/4" x 30" rebar set
 - 3/4" rebar found
 - 1" x 30" iron pipe with 2" alum. cap set
 - 2" x 30" iron pipe with brass cap set
 - RR spike found
 - utility pole
 - Set white vinyl sign post
- Bearings from RTK GPS work in Langlade County Coordinate System (LCCS).



I, David E. Tlusty, Registered Land Surveyor, as Langlade County Surveyor, certify that the corner location on this record was determined by me and that this U.S. Public Land Survey Monument Record is correct to the best of my knowledge and belief.

Index No. N15 31-12



○ = corner perpetuated
The South Quarter corner of Section 15, T. 31 N., R. 12 E., Langlade County, WI

