

CERTIFIED LAND CORNER RESTORATION

Index No. N-15

State of Wisconsin }
 County of Lanlade } ss.

I, Thomas R. Arnott, do hereby certify that on the 9 day of Sept, 19 78, I found evidence of the 1/4 corner of sections 15 and 22 Township 31, North, Range 12 E, Fourth Principal Meridian, as described hereon; and that from this evidence I established a new monument and accessories as described hereon to perpetuate the original location of this corner.

History of original corner establishment:

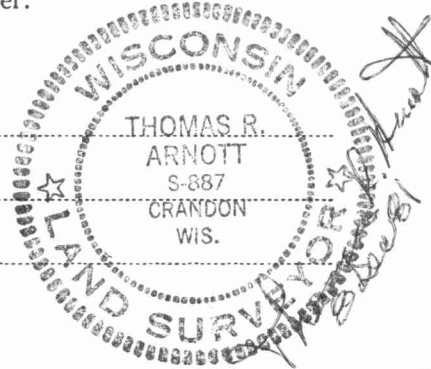
Orig. by James McBride
 Nov. 21 thru Dec. 1, 1857

Hemlock 8 N57W 16
 Birch 14 S37E 16

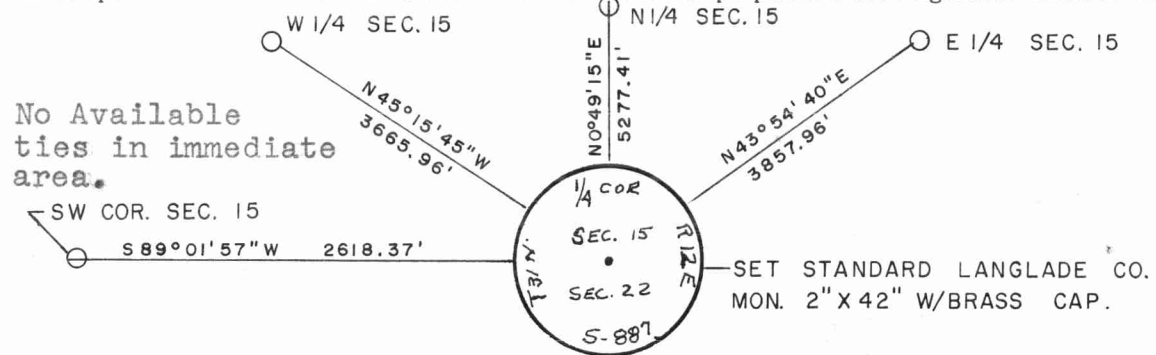
Description of corner evidence found:
 No evidence found.

Set monument on line from southwest corner section (15, 16, 21 and 22), the meander corner on the west line of Mueller Lake and deeds in the area.

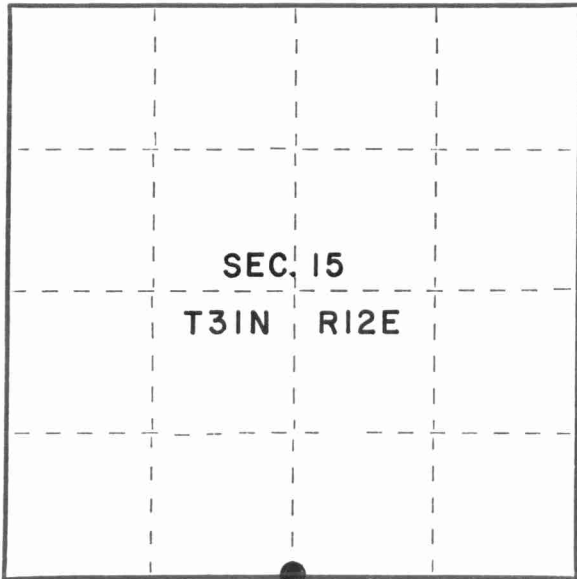
Resident witnesses:



Description of monument and accessories I established to perpetuate the original location of this corner.



No Available ties in immediate area.



○ = Corner monument restored.

Dated at Crandon, Wis., this 8th day of December, 1981

Signature Thomas R. Arnott Title Surveyor Registration No. S-887
 (County Surveyor, Registered Land Surveyor, or other duly authorized official)

Office of Register of Deeds, County of Lanlade, I hereby certify that the within instrument was filed in this office for record on the _____ day of _____, 19____ at _____ o'clock _____ M.

(Register of Deeds)

By _____ Deputy

