

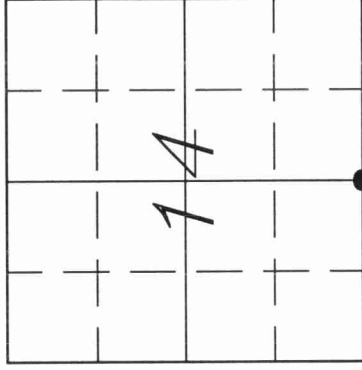
# U.S. PUBLIC LAND SURVEY MONUMENT RECORD

3112140020

HISTORY OF ORIGINAL CORNER ESTABLISHMENT AND SUBSEQUENT RESTORATION AND DESCRIPTION OF ANY RECORD, MONUMENT OCCUPATIONAL, TESTIMONIAL OR OTHER EVIDENCE CONSIDERED:

The Original Corner was established in 1857 by James McBride. Original Bearing Trees: Elm 12" N18E 4lks., Hemlock 30" S3E 7lks. Hutchinson, date unknown, ran the N-S 1/4 line of Sec 14 with a distance of 5314.65'. (Our measured distance: 5308.48') Hutchinson, in 1905, also ran the N-S 1/4 line of Sec 23 with a distance of 5221.26'. (Our distance between the N and S 1/4 corners of Sec 23 is 5221.08') On July 20, 1999, Becky and Gerry Bahar searched for a monument and found a fence intersection which we accepted as the 1/4 corner location, set a 1 1/4" rod, and tied it out.

● = LOCATION OF CORNER

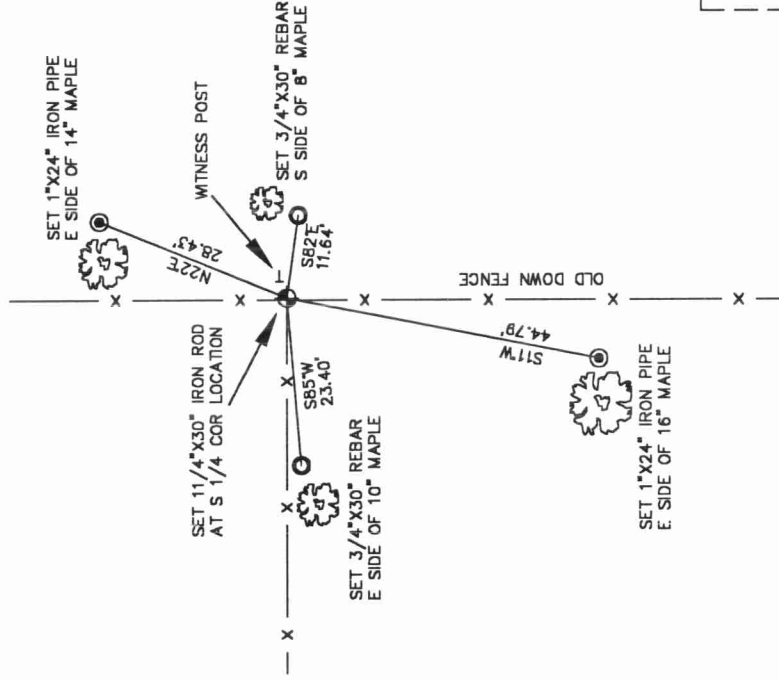


SECTION 14  
TOWNSHIP 31 NORTH, RANGE 12 EAST  
TOWN OF \_\_\_\_\_ POLAR \_\_\_\_\_  
LANGLADE COUNTY, WISCONSIN

CORNER WAS: (CHECK ALL THAT APPLY)

- RESTORED THROUGH ACCEPTANCE OF AN OBLITERATED EVIDENCE LOCATION
- RESTORED THROUGH ACCEPTANCE OF A FOUND PERPETUATED LOCATION
- CONSIDERED A LOST CORNER AND REESTABLISHED THROUGH LOST CORNER PROPORTIONATE METHODS (INCLUDE A PLAN VIEW DRAWING SHOWING DISTANCES AND DIRECTIONS TO OTHER PUBLIC LAND SURVEY CORNERS USED FOR PROPORTIONING AND DETERMINING THE CORNER LOCATION)
- RESTORED OR REESTABLISHED IN A LOCATION THAT DIFFERS FROM A PREVIOUS RESTORATION OR REESTABLISHMENT (INCLUDE A PLAN VIEW DRAWING AND INDICATE WHAT WAS SET AND/OR FOUND)
- CHECK IF THERE IS ADDITIONAL INFORMATION ON BACK

DESCRIBE THE MONUMENT AND ACCESSORIES USED TO PERPETUATE THE LOCATION OF THE CORNER. (INCLUDE A PLAN VIEW DRAWING AND INDICATE WHAT WAS SET AND/OR FOUND) ALSO INCLUDE FOUR TIES TO THE SECTION CORNER AND DESCRIPTION OF THE TIES.



DANIEL E. HIGGINBOTHAM

(TYPE OR PRINT NAME) CERTIFY THAT THE CORNER LOCATION SHOWN ON THIS RECORD WAS DETERMINED BY ME OR UNDER MY DIRECTION AND CONTROL, AND THAT THIS U.S. PUBLIC LAND SURVEY MONUMENT RECORD IS CORRECT AND COMPLETE TO THE BEST OF MY KNOWLEDGE AND BELIEF.

*Daniel E. Higginbotham*  
SIGNATURE

5/22/00  
DATE



N19  
31-12

INDEX NO.

