

LANGLADE COUNTY U.S. PUBLIC LAND CORNER RESTORATION

The Southeast corner of Section 14, T. 31 N., R. 12 E., Langlade County, WI.

Corner was: (check all that apply)

4311214 0000

- Restored through acceptance of an obliterated evidence location.
- Restored through acceptance of a found perpetuated location.
- Determined to be lost and re-established through proportionate methods.
- Show bearings and distances to PLSS corners used for proportioning, and show original distances).
- Restored/recovered/re-established in a location that differs from a previously established position.
- (Show difference in plan view below).
- Check here if additional information is shown on the reverse side of this form.

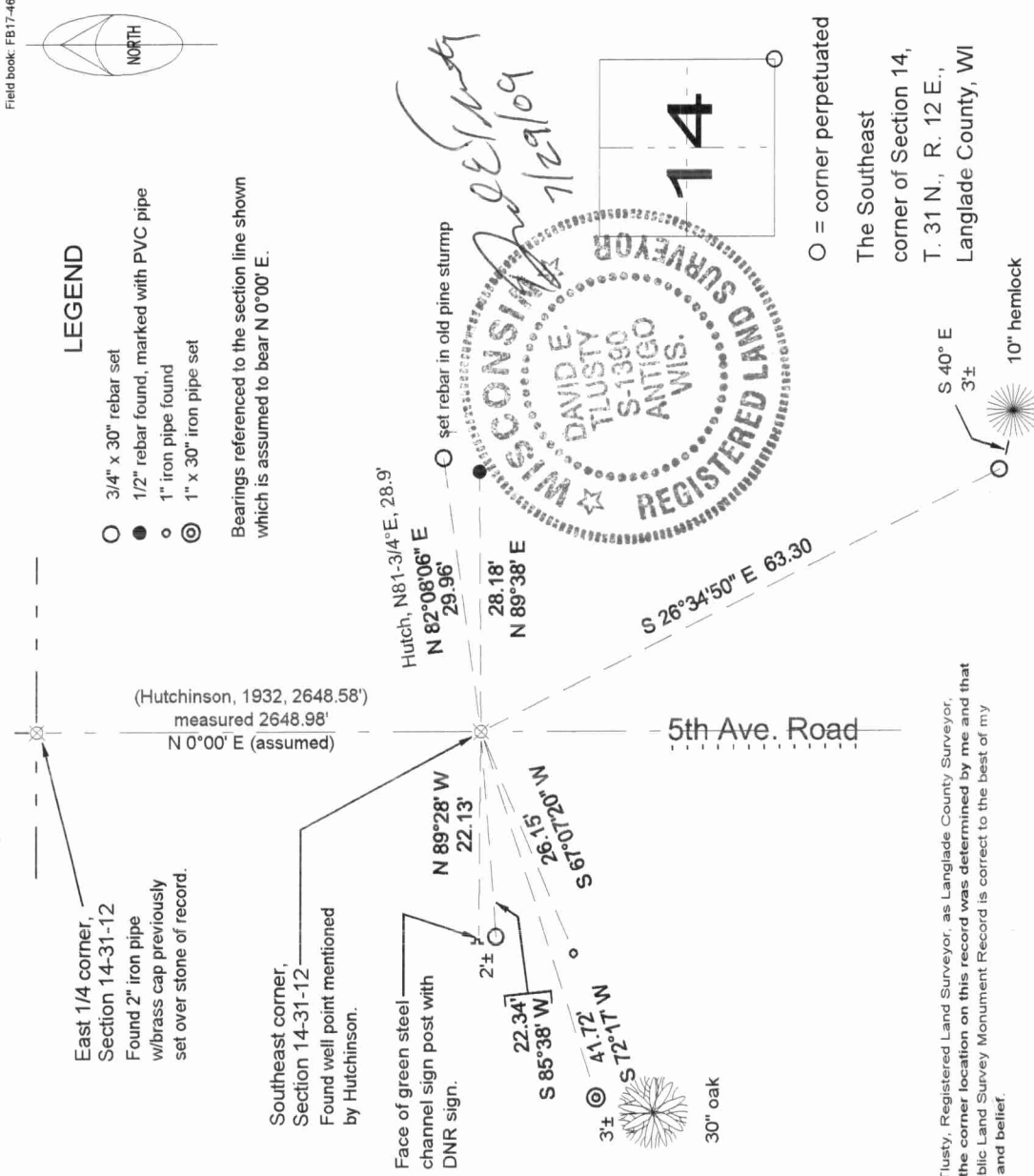
Describe record evidence, recovered physical evidence, occupational evidence, testimonial evidence and all other evidence considered in the recovery/restoration of the corner.

The original corner was established in 1857 by James McBride. Original bearing trees: tamarac, 14", N23°W, 13 links; tamarac, 14", S48°E, 4 links; tamarac, 14", N57°E, 6 links and a tamarac, 8", S42°W, 3 links. In 1932, Malcolm Hutchinson said "S bet 13 & 14, 40.13 ch to cor. by me set from orig. tree, Drive point for cor." Hutch. measured to two pine stumps: 18", N81 3/4°E, 28.9' and 24", S45°E, 76.6' 07/28/1997 D. Tlusty saw a well point in road here when doing preliminary measurements for the recovery of the quarter corner to the north of here. 07/14/09 D. Tlusty. 5th Ave Road has been re-paved since 1997. At 0.65' below the current pavement, I found the top of a 1 1/4" dia. rusted well point, top leaning slightly to the west. Dug down 2.5 and plumbed the existing well point. I also found remains of pine stump at bearing and distance called for by Hutchinson. The distance I measure to the quarter corner to the north is in agreement with Hutchinsons distance. I accept the well point as perpetuated evidence of the original corner location, based on Hutchinsons statement: "...set from orig. tree". I placed a pavement encrusted RR spike 1' below the road surface and at the south edge of the existing well point. I set a gearhead spike in a bituminous patch over the well point and measured to reference markers as shown and described below.

Physical description of the monument set:

I did not replace well point found.

Describe the accessories used to perpetuate the corner. Include a plan view drawing and accessories found/set. Describe measuring point on bearing trees. Show any topographic features that would aid in future recovery of the corner.



Field book: FB17-46

Index No. N21 31-12

I, David E. Tlusty, Registered Land Surveyor, as Langlade County Surveyor, certify that the corner location on this record was determined by me and that this U.S. Public Land Survey Monument Record is correct to the best of my knowledge and belief.

○ = corner perpetuated
The Southeast corner of Section 14, T. 31 N., R. 12 E., Langlade County, WI