

PRESERVATION OF LANDMARKS

SECTION 59,635(7) WISCONSIN STATUTES

COUNTY LAVELADE

TOWN POLAR

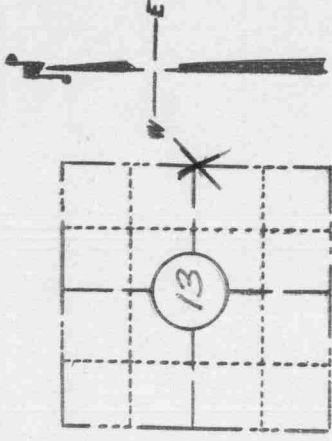
HIGHWAY STH. 64

SECTION NO. 13

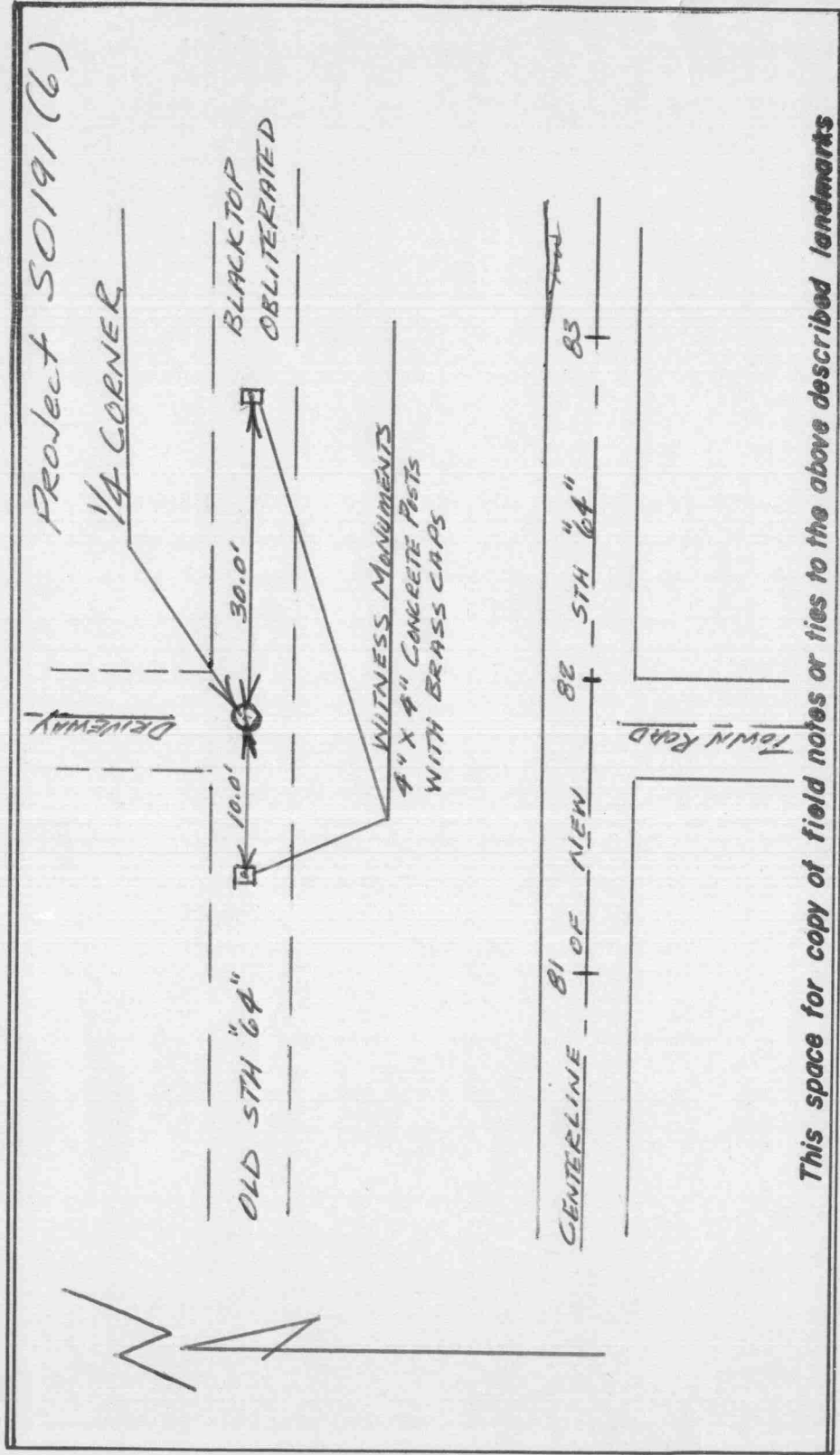
T. 31 N., R. 12 E.

TYPE OF LANDMARK 1/4 CORNER

LOCATION INDICATED ON SKETCH X



LOCATION SKETCH



This space for copy of field notes or ties to the above described landmarks

Field notes or records filed in book no. FIELD BOOK No. 4 - P. 58, 59

at the STATE HIGHWAY COMMISSION OF WISCONSIN office.

City of RHINELANDER ONEIDA County.

Located or established by H. M. GOTECHY, 19

Title Proj. Engr.

County Clerk's Office Langlade County, Wis. } ss

Received for record Oct 7, 19 64

Copy sent to County Surveyor _____, 19 _____

[Signature]
County Clerk

122