

CERTIFIED LAND CORNER RESTORATION

Index No. G-25

State of Wisconsin }
County of LANGLADE } ss.

I WILLIAM F. KELLY, do hereby certify that on the 15th day of DECEMBER, 1982, I found evidence of the E. 1/4 corner of SECT. 12 Township 31, North, Range 12 EAST, Fourth Principal Meridian, as described hereon; and that from this evidence I established a new monument and accessories as described hereon to perpetuate the original location of this corner.

Resident witnesses:

F. Brown
.....
.....
.....

History of original corner establishment:

ORIGINAL CORNER ESTABLISHED BY
JAMES MCBRIDE IN NOV.-DEC., 1857.

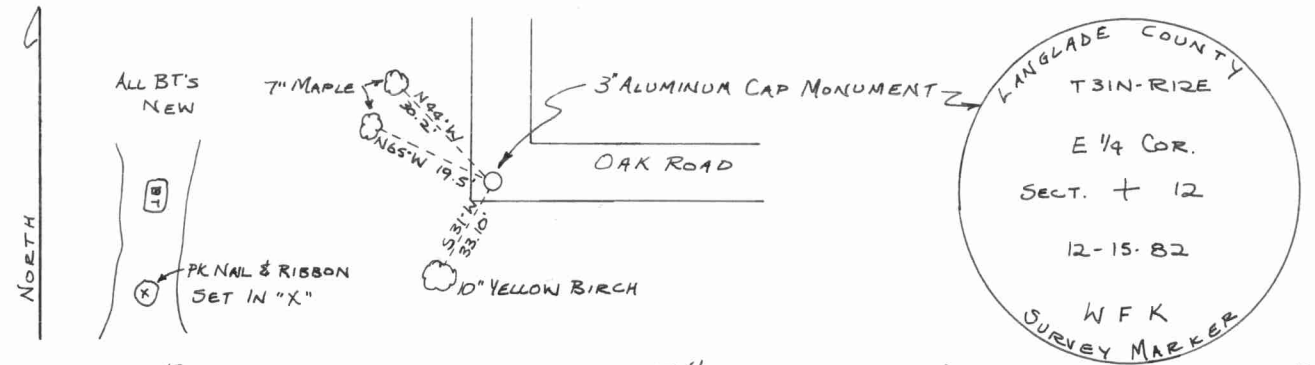
Description of corner evidence found:

FOUND IN PLACE: 1" IRON PIPE 18" BELOW SURFACE.
SET 3" x 42" ALUMINUM CAP MONUMENT OVER
EXISTING IRON PIPE. MARKED 3 NEW BT'S.



William F. Kelly
12-12-82

Description of monument and accessories I established to perpetuate the original location of this corner.



Dated at ELCHO, Wis., this 15th day of DECEMBER, 1982.

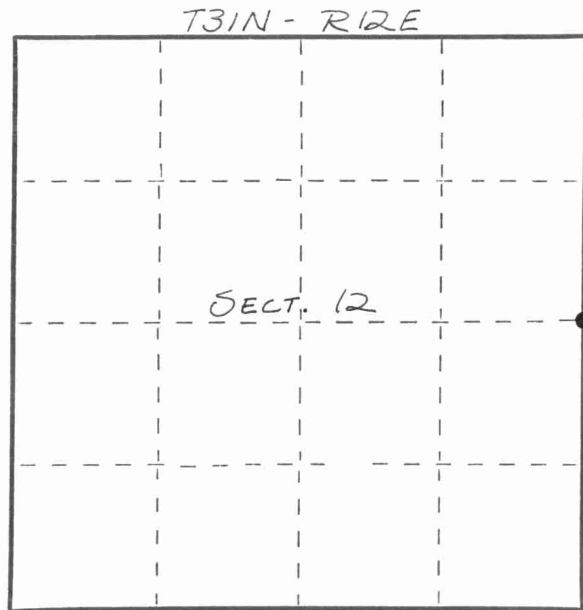
Signature William F. Kelly Title COUNTY SURVEYOR Registration No. 1098
(County Surveyor, Registered Land Surveyor, or other duly authorized official)

Office of Register of Deeds, County of....., I hereby certify that the within instrument was filed in this office for record on the.....day of....., 19..... at.....o'clock..... M.

(Register of Deeds)

By.....Deputy

FORM 985 H. C. MILLER CO., MILWAUKEE



○ = Corner monument restored.

