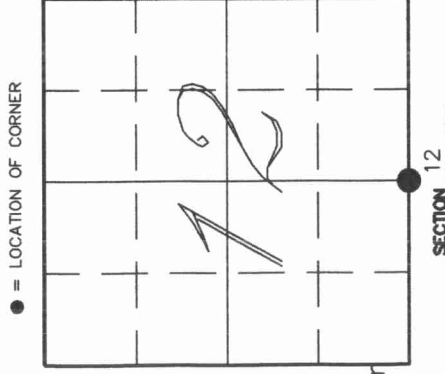


U.S. PUBLIC LAND SURVEY MONUMENT RECORD

4312120020

HISTORY OF ORIGINAL CORNER ESTABLISHMENT AND SUBSEQUENT RESTORATION AND DESCRIPTION OF ANY RECORD, MONUMENT OCCUPATIONAL, TESTIMONIAL OR OTHER EVIDENCE CONSIDERED:

The Original 1/4 Corner was set in 1857 by James McBride. Original BT's: 10" Sugar Maple N51W 23lks., 10" Hemlock S25E 28lks. Dorr in 1902, visited the S 1/4 of Sec 12 and set two new BT's: 10" Maple S481/2W 441/2lks., 10" Birch N791/2E 531/2lks. In the 1930's Hutchinson set two new BT's at the S1/4: 10" Sugar Maple S443/4W 45lks., 12" Sugar Maple S35W 64lks. In March 1996, Higginbotham and Brinkmeier found a bent 1/2" rod in a snowmobile trail along an East-West fence line within 8' of Hutchinson's distance (2658' from C1/4 of Sec 13). We accepted this location as best evidence and replaced it with a 3/4"x30" iron rod and placed 1"x24" iron pipes at tie locations.



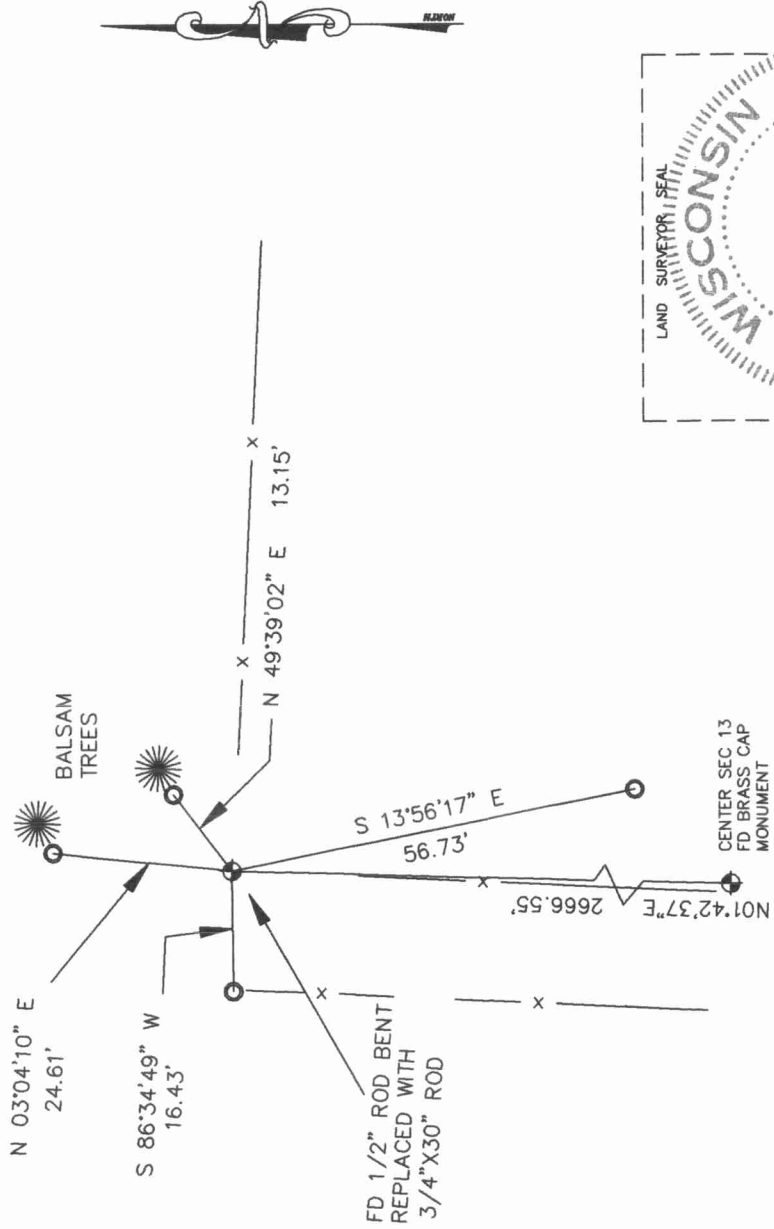
TOWNSHIP 31 NORTH, RANGE 12 EAST
 TOWN OF POLAR
 LANGLADE COUNTY, WISCONSIN

CORNER WAS: (CHECK ALL THAT APPLY)

- RESTORED THROUGH ACCEPTANCE OF AN OBLITERATED EVIDENCE LOCATION
- RESTORED THROUGH ACCEPTANCE OF A FOUND PERPETUATED LOCATION
- CONSIDERED A LOST CORNER AND REESTABLISHED THROUGH LOST CORNER PROPORTIONATE METHODS (INCLUDE A PLAN VIEW DRAWING SHOWING DISTANCES AND DIRECTIONS TO OTHER PUBLIC LAND SURVEY CORNERS USED FOR PROPORTIONING AND DETERMINING THE CORNER LOCATION)
- RESTORED OR REESTABLISHED IN A LOCATION THAT DIFFERS FROM A PREVIOUS RESTORATION OR REESTABLISHMENT (INCLUDE A PLAN VIEW DRAWING AND INDICATE WHAT WAS SET AND/OR FOUND)
- CHECK IF THERE IS ADDITIONAL INFORMATION ON BACK

DESCRIBE THE MONUMENT AND ACCESSORIES USED TO PERPETUATE THE LOCATION OF THE CORNER. (INCLUDE A PLAN VIEW DRAWING AND INDICATE WHAT WAS SET AND/OR FOUND) ALSO INCLUDE FOUR TIES TO THE SECTION CORNER AND DESCRIPTION OF THE TIES.

○ SET 1" x24" IRON PIPES AT ALL TIE POINTS



DANIEL E. HIGGINBOTHAM

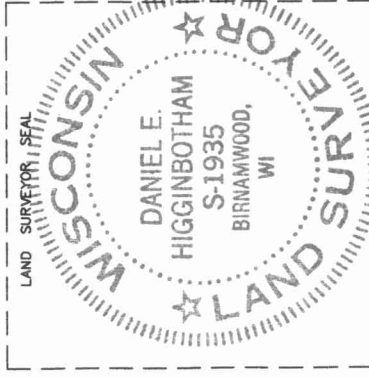
(Type or print name) CERTIFY THAT THE CORNER LOCATION SHOWN ON THIS RECORD WAS DETERMINED BY ME OR UNDER MY DIRECTION AND CONTROL AND THAT THIS U.S. PUBLIC LAND SURVEY MONUMENT RECORD IS CORRECT AND COMPLETE TO THE BEST OF MY KNOWLEDGE AND BELIEF.

D. Higginbotham

SIGNATURE

4/11/03

DATE



J23

INDEX NO.

