

U.S. PUBLIC LAND SURVEY MONUMENT RECORD

(Prepared and as required by S. A-E 7.08 WI Administrative Code)

THE NORTHWEST CORNER OF SECTION 18, T. 31, N., R. 13 E., LANGLADE COUNTY, WISCONSIN.

- CORNER WAS (CHECK ALL THAT APPLY):
- RESTORED THROUGH ACCEPTANCE OF AN ORILATERATED EVIDENCE LOCATION.
 - RESTORED THROUGH ACCEPTANCE OF A FOUND PERPETUATED LOCATION.
 - DETERMINED TO BE LOST AND RE-ESTABLISHED BY PROPORTIONATE METHODS.
(SHOW BEARINGS AND DISTANCES TO PLSS CORNERS USED FOR PROPORTIONING.)
 - RESTORED/RECOVERED/REESTABLISHED IN A LOCATION THAT DIFFERS FROM A PREVIOUSLY ESTABLISHED POSITION.
(SHOW DIFFERENCE IN PLAN VIEW BELOW)
 - CHECK HERE IF ADDITIONAL INFORMATION IS SHOWN ON THE REVERSE SIDE OF THIS FORM.

DESCRIBE CORNER EVIDENCE, RECOVERED PHYSICAL EVIDENCE, OCCUPATIONAL EVIDENCE, TESTIMONIAL EVIDENCE AND ALL OTHER EVIDENCE THAT WAS CONSIDERED IN THE RESTORATION/RECOVERY/REESTABLISHMENT OF THE CORNER.

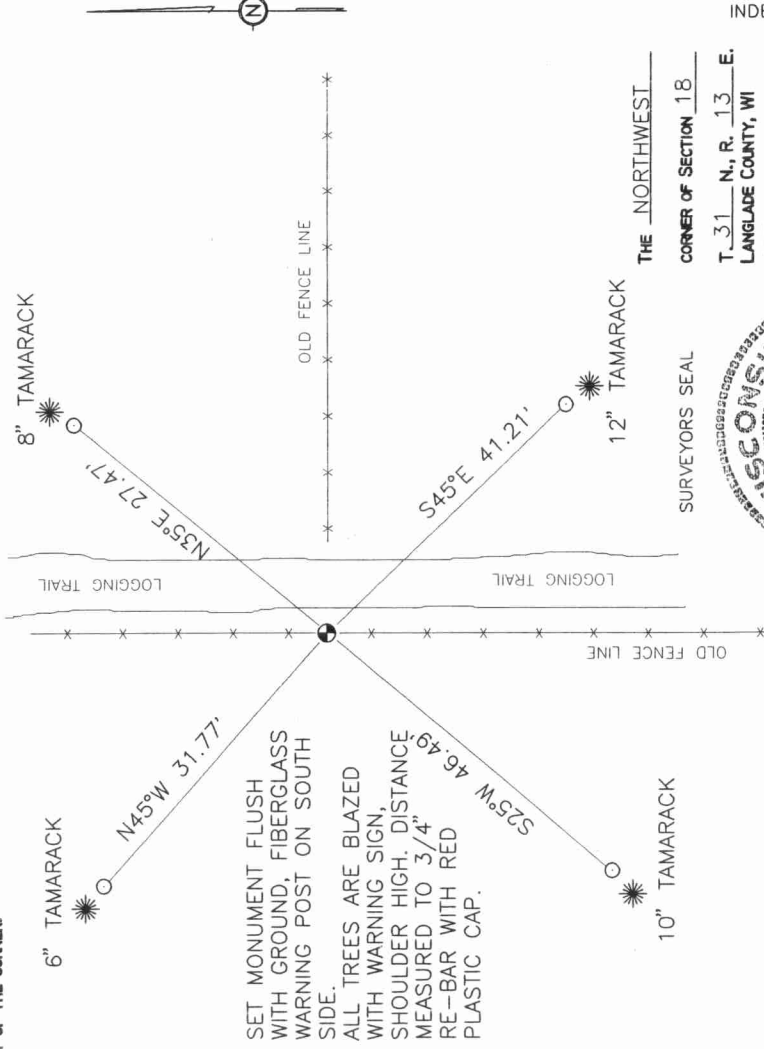
TALKED WITH THE ANDERSON FAMILY ABOUT LOCATION OF THIS CORNER. THEY WERE AWARE OF OTHER EXISTING CORNERS IN THIS AREA, BUT SAID THERE WAS NEVER ANY CORNER HERE, OTHER THAN FENCE INTERSECTION. THEY MENTIONED THAT EVERYONE HELD THE FENCE LINES AS PROPERTY LINES. LOOKED AT STRAIGHT LINE PROPORTION FOR THIS CORNER, BUT FOUND THAT FENCE LINES MADE BETTER SENSE WITH LINES OF OCCUPATION. HELD FENCE CORNER INTERSECTION, SET AND TIED OUT CORNER. CORNER FALLS ON EDGE OF OLD LOGGING TRAIL THAT IS SLIGHTLY BUILT UP THROUGH SWAMP. IF THERE WAS A CORNER HERE, IT WAS BURIED, OR MORE LIKELY DUG OUT WHEN ROAD WAS BUILT. LOOKED WITH MAGNETIC LOCATOR, FOUND NOTHING.

SEE BACK FOR MORE INFORMATION.

PHYSICAL DESCRIPTION OF THE MONUMENT SET:

SET LANGLADE COUNTY MONUMENT. 4" BRASS CAP ON 1-1/2" x 30" IRON PIPE. STAMPED CAP AS SHOWN ON BACK OF FORM.

DESCRIBE THE ACCESSORIES USED TO PERPETUATE THE LOCATION OF THE CORNER. INCLUDE A PLAN VIEW DRAWING AND INDICATE ACCESSORIES FOUND AND SET. DESCRIBE THE MEASURING POINT ON BEARING TREES. SHOW ANY TOPOGRAPHIC FEATURES THAT WOULD AID IN THE FUTURE RECOVERY OF THE CORNER.

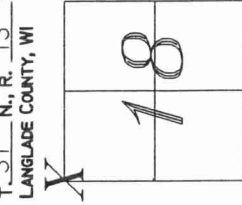


SET MONUMENT FLUSH WITH GROUND, FIBERGLASS WARNING POST ON SOUTH SIDE.
ALL TREES ARE BLAZED WITH WARNING SIGN, SHOULDER HIGH. DISTANCE MEASURED TO 3/4" RE-BAR WITH RED PLASTIC CAP.

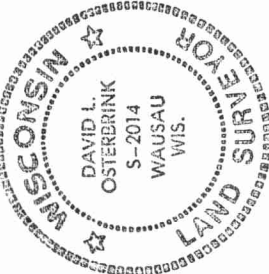
SURVEYORS SEAL

THE NORTHWEST
CORNER OF SECTION 18
T. 31 N., R. 13 E.
LANGLADE COUNTY, WI

INDEX No. J1
31-13



● = LOCATION OF CORNER



I, DAVID L. OSTERBRINK CERTIFY THAT THE CORNER LOCATION SHOWN ON THIS RECORD WAS DETERMINED BY ME OR UNDER MY DIRECTION AND CONTROL AND THAT THIS U.S. PUBLIC LAND SURVEY MONUMENT RECORD IS CORRECT AND COMPLETE TO THE BEST OF MY KNOWLEDGE AND BELIEF.

David L. Osterbrink
SIGNATURE 7-24-97
DATE



SECTION SUMMARY

SECTION 18-31N-13E EVERGREEN

